



Prague Airport Authority Ground Handling

Your handling agent at PRG





Introduction

Prague Airport Authority
Ground Handling Services
Department:

- provides full passenger and technical handling
- for aircraft from general aviation up to B747 category
- 24 hours daily, 365 days in the year



Our customers

Scheduled:

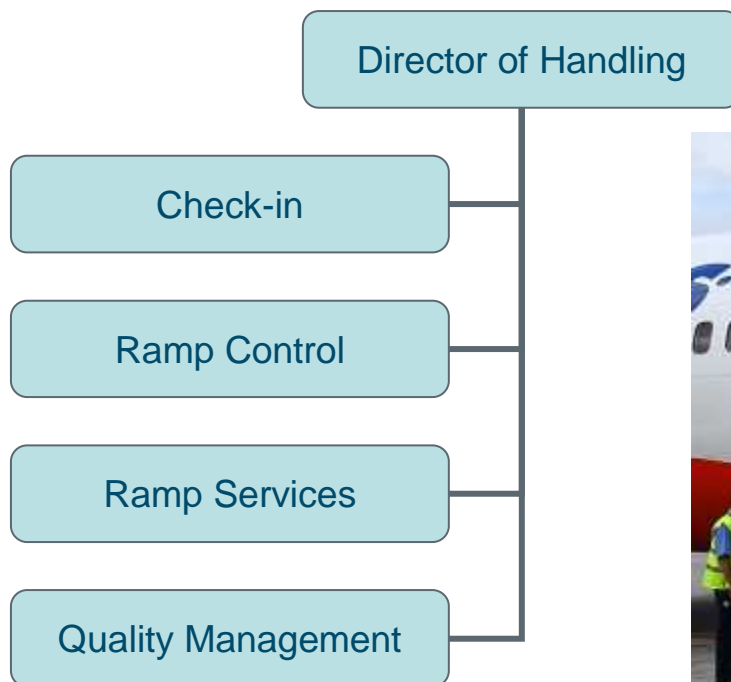
- Air Moldova
 - Belavia
 - Polet
 - Rossiya
 - Ryanair
 - S7 Airlines
 - Smart Wings
 - TAP Air Portugal
 - Tatarstan Airlines
 - Tunisair
 - Ural Airlines
 - Vueling
 - Wizzair
 - Yamal Airlines
- and others.



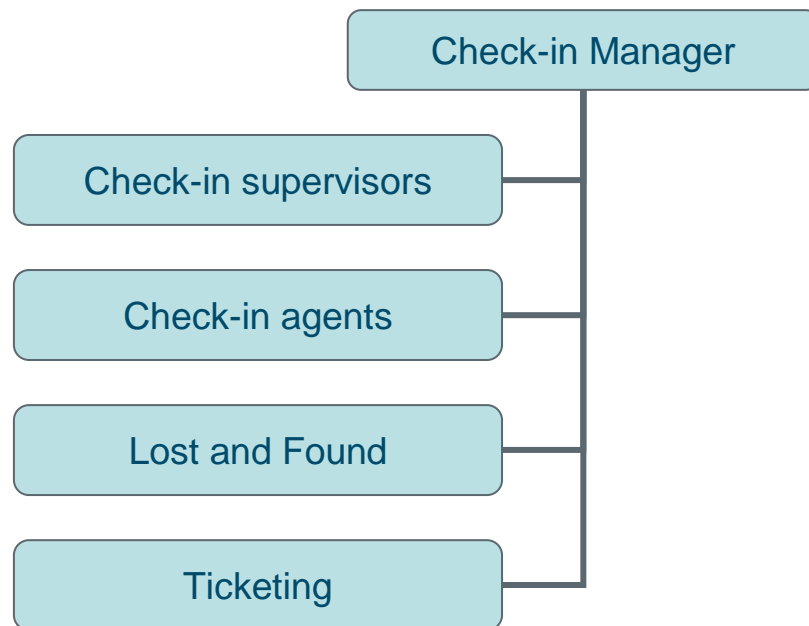
Non-scheduled:

- Travel Service
- Nouvelair
- Karthago Airlines
- Iberworld
- Israil
- Bulgarian Air Charter
- Sun Express
- Privilege Style
- Hola Airlines
- Europe Airpost and others.

Structure



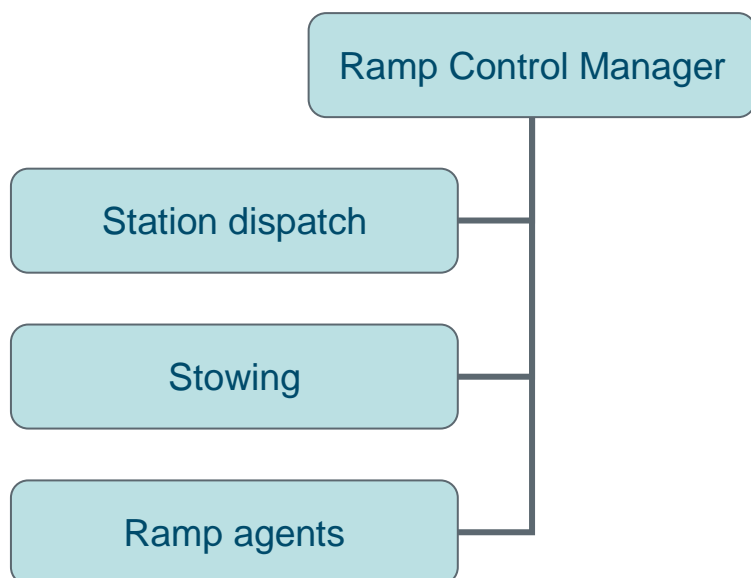
Check-in



Remark: We use SITA DCS check-in system, but we are able to host another systems too. Worldtracer is used on Lost and Found unit.



Ramp Control



Remark: You can ask our dispatch for all services, including hotels booking, transport to hotels or alternate airport, catering etc.



Ramp Services

Ramp Services Manager

Baggage sorting
and loading

Technical equipment staff





Business lounges

Your passengers are welcomed at business lounges at Terminal 1 and Terminal 2.



General Aviation

We handle 45% of private flights at PRG. Flights are operated from Terminal 3.



Technical equipment

| | |
|---------------------------|----|
| Towbarless vehicles | 4 |
| Tow/pushback tractors | 4 |
| Tow tractors for trailers | 20 |
| Highloaders | 4 |
| Belt loaders | 10 |
| Stairs | 16 |
| Toilet service cars | 2 |
| Baggage Trailers | 60 |
| Container trailers | 26 |
| GPU | 8 |
| Heating unit | 1 |
| Jet starter | 1 |
| Microbuses | 3 |
| Potable water car | 2 |
| De-icing cars | 2 |





Contacts

- Director of Handling Department:
Mr. Jaroslav Štěpánek,
tel: +420 220 11 84 68, e-mail: jaroslav.stepanek@prg.aero
- Ground Handling Agreements, handling orders:
Mr. Aleš Kuba
tel: +420 220 11 63 93, e-mail: ales.kuba@prg.aero, SITA: PRGKIXH
- H24 Station dispatch, handling orders:
tel: +420 220 11 39 86, +420 220 11 60 77
e-mail: handling.ops@prg.aero, SITA: PRGKOXH

**Thank you for your attention.
We are looking forward to our cooperation.**

