

CONTENTS

PASSENGERS

Total passengers per month	2
Passengers per traffic type	3
Passengers per area	9
Transfer and Transit passengers on departure	10

MOVEMENTS

Total movements per month	11
Movements per traffic type	12
Movements per area	19

MTOW

Total landings of aircrafts in MTOW per month	20
MTOW per traffic type	21
MTOW per area	28

CARGO

Total Air Cargo per month	29
Air Cargo per traffic type	30
Air cargo per area	31

DESTINATIONS

Destinations Summary	32
TOP 15 Destinations – Total by PAX.....	33
TOP 15 Destinations per traffic type	34
TOP 15 Destinations – Total by MVT.....	35

COUNTRIES

TOP 15 Countries – Total by PAX.....	36
TOP 15 Countries per traffic type	37
TOP 15 Countries – Total by MVT.....	38

AIRLINES

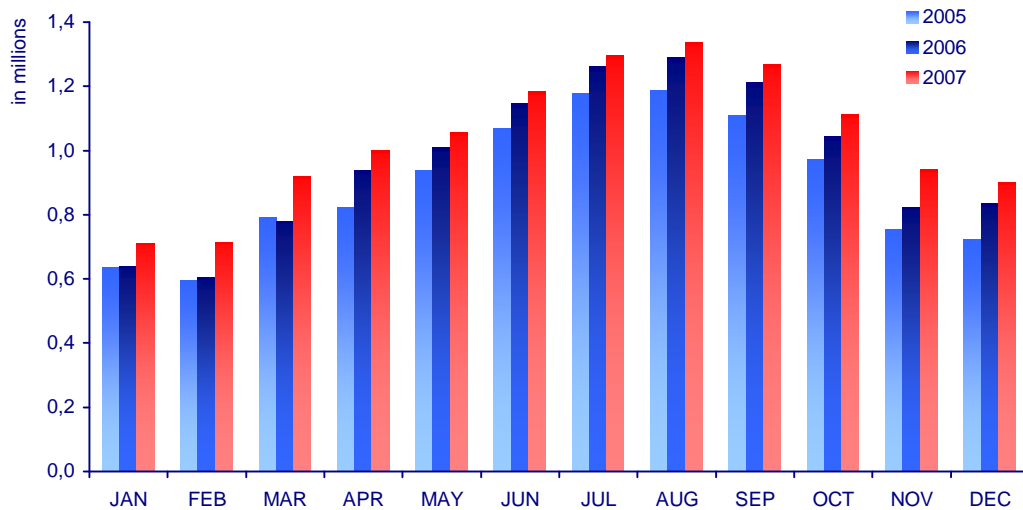
Airlines Summary	39
TOP 15 Airlines	40
Based airlines split	40
Alliances split	41

PASSENGERS

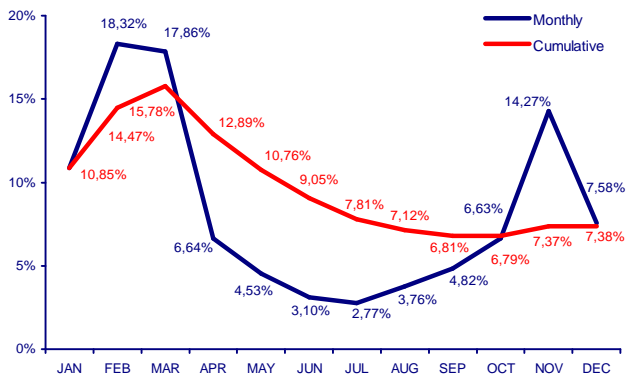
Passengers per month - Total

Month	JAN	FEB	MAR	APR	MAY	JUN	JUL	AUG	SEP	OCT	NOV	DEC	TOTAL
2005	636 659	596 098	790 895	822 073	937 581	1 069 325	1 178 612	1 188 099	1 109 747	970 252	754 818	722 861	10 777 020
2006	640 547	603 753	779 908	937 529	1 008 907	1 147 115	1 260 954	1 289 897	1 210 513	1 042 986	824 012	835 390	11 581 511
2007	710 023	714 384	919 192	999 808	1 054 638	1 182 640	1 295 938	1 338 362	1 268 875	1 112 097	941 616	898 681	12 436 254
Change 2007/2006													
Monthly	10,85%	18,32%	17,86%	6,64%	4,53%	3,10%	2,77%	3,76%	4,82%	6,63%	14,27%	7,58%	
Cumulative	10,85%	14,47%	15,78%	12,89%	10,76%	9,05%	7,81%	7,12%	6,81%	6,79%	7,37%	7,38%	
2006/2005													
2006/2005	100,61%	101,28%	98,61%	114,04%	107,61%	107,27%	106,99%	108,57%	109,08%	107,50%	109,17%	115,57%	
2007/2006													
2007/2006	110,85%	118,32%	117,86%	106,64%	104,53%	103,10%	102,77%	103,76%	104,82%	106,63%	114,27%	107,58%	

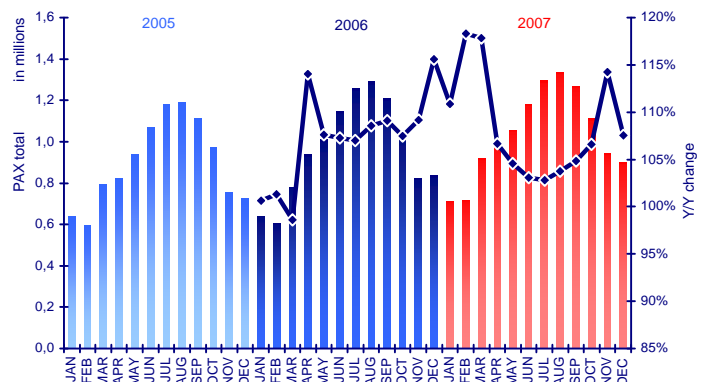
Passengers per month - Total



Change 2007/2006 - Total PAX

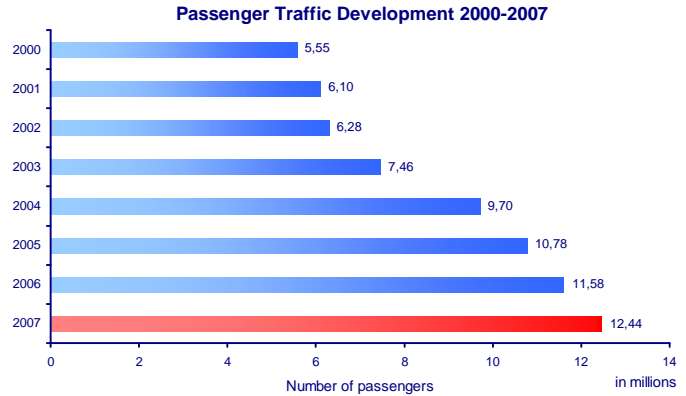


Year-on-year change - Total PAX



Passenger Traffic Development 2000 - 2007

2000	5 553 532
2001	6 098 742
2002	6 276 918
2003	7 463 120
2004	9 696 413
2005	10 777 020
2006	11 581 511
2007	12 436 254



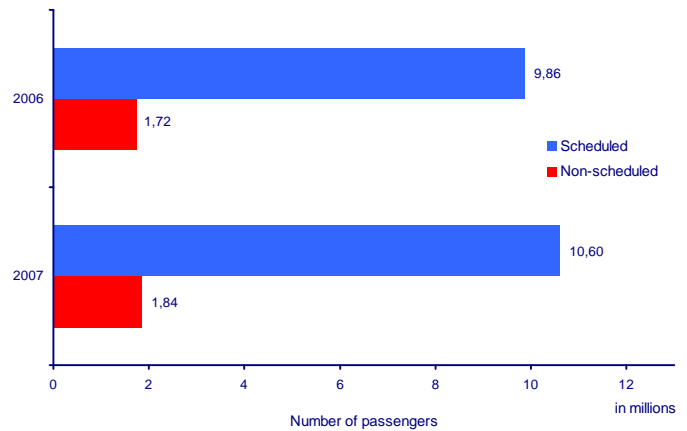
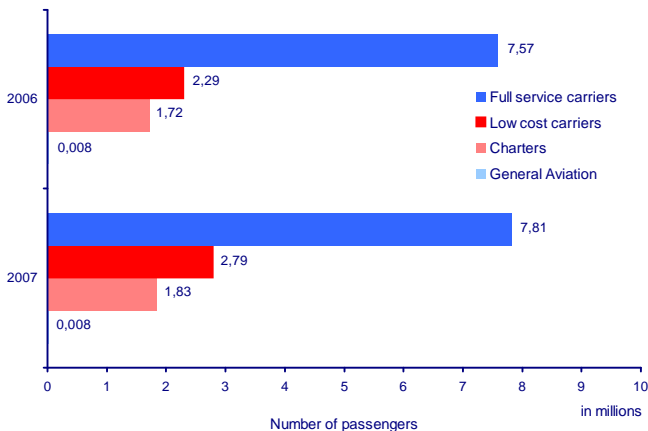
Passengers per traffic type

2007

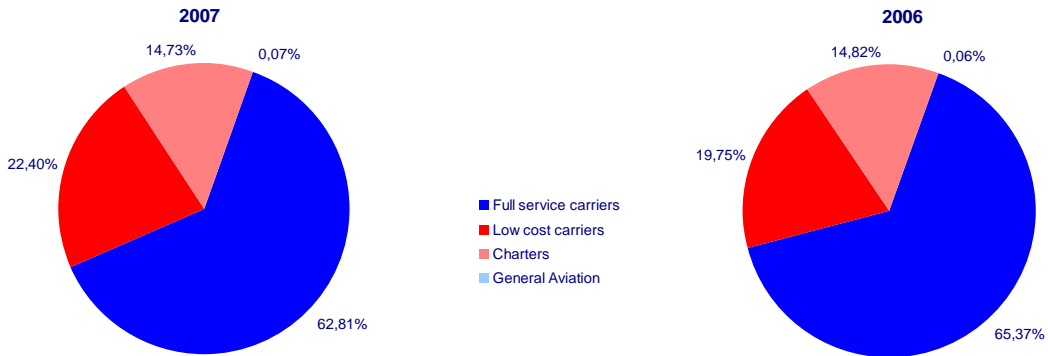
Month	JAN	FEB	MAR	APR	MAY	JUN	JUL	AUG	SEP	OCT	NOV	DEC	TOTAL
Total passengers	710 023	714 384	919 192	999 808	1 054 638	1 182 640	1 295 938	1 338 362	1 268 875	1 112 097	941 616	898 681	12 436 254
Scheduled	654 352	666 478	837 602	880 545	930 383	951 072	993 169	1 024 502	1 001 706	965 557	871 222	819 969	10 596 557
Full service carriers	488 399	481 308	616 737	647 941	689 365	708 265	733 434	756 698	756 956	732 308	618 802	580 841	7 811 054
Low cost carriers	165 953	185 170	220 865	232 604	241 018	242 807	259 735	267 804	244 750	233 249	252 420	239 128	2 785 503
Non-scheduled	55 671	47 906	81 590	119 263	124 255	231 568	302 769	313 860	267 169	146 540	70 394	78 712	1 839 697
Charters	55 274	47 559	80 970	118 458	123 447	230 634	302 164	313 090	266 398	145 819	69 609	78 158	1 831 580
General Aviation	397	347	620	805	808	934	605	770	771	721	785	554	8 117

	2006	2007	Change 07/06	Market Share
Total passengers	11 581 511	12 436 254	7,38%	100,00%
Scheduled	9 857 497	10 596 557	7,50%	85,21%
Full service carriers	7 570 368	7 811 054	3,18%	62,81%
Low cost carriers	2 287 129	2 785 503	21,79%	22,40%
Non-scheduled	1 724 014	1 839 697	6,71%	14,79%
Charters	1 716 502	1 831 580	6,70%	14,73%
General Aviation	7 512	8 117	8,05%	0,07%

Trend 2006-2007



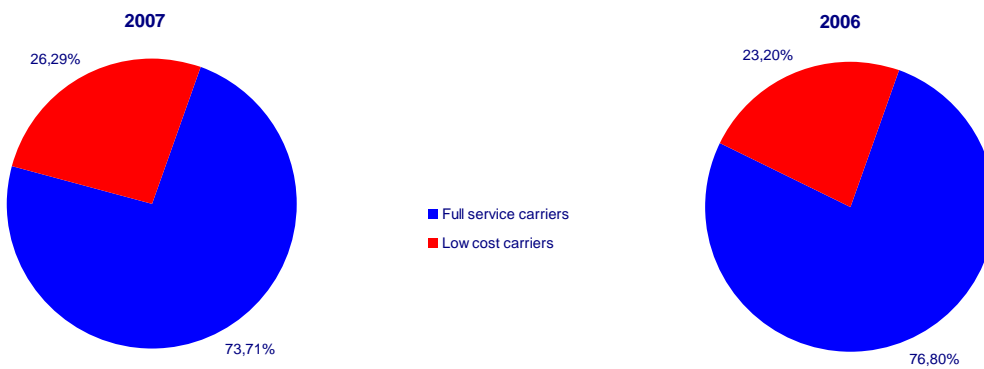
Traffic Types Split



Scheduled vs. Non-scheduled Traffic



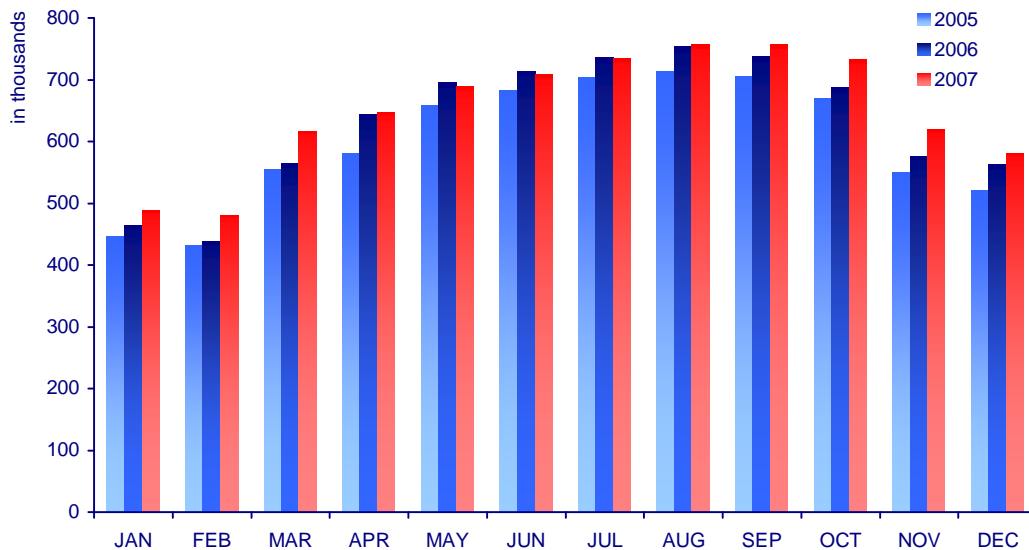
Scheduled Traffic - Full Service vs. Low Cost Carriers



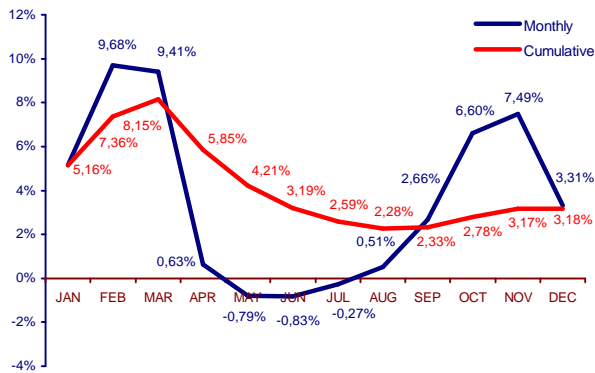
Passengers per month - Full service carriers

Month	JAN	FEB	MAR	APR	MAY	JUN	JUL	AUG	SEP	OCT	NOV	DEC	TOTAL
2005	446 590	430 945	554 927	581 036	659 550	682 932	703 714	713 221	705 530	669 103	550 148	521 575	7 219 271
2006	464 414	438 814	563 691	643 891	694 888	714 198	735 413	752 860	737 335	686 983	575 673	562 208	7 570 368
2007	488 399	481 308	616 737	647 941	689 365	708 265	733 434	756 698	756 956	732 308	618 802	580 841	7 811 054
Change 2007/2006													
Monthly	5,16%	9,68%	9,41%	0,63%	-0,79%	-0,83%	-0,27%	0,51%	2,66%	6,60%	7,49%	3,31%	
Cumulative	5,16%	7,36%	8,15%	5,85%	4,21%	3,19%	2,59%	2,28%	2,33%	2,78%	3,17%	3,18%	
Y/Y change													
2006/2005	103,99%	101,83%	101,58%	110,82%	105,36%	104,58%	104,50%	105,56%	104,51%	102,67%	104,64%	107,79%	
2007/2006	105,16%	109,68%	109,41%	100,63%	99,21%	99,17%	99,73%	100,51%	102,66%	106,60%	107,49%	103,31%	

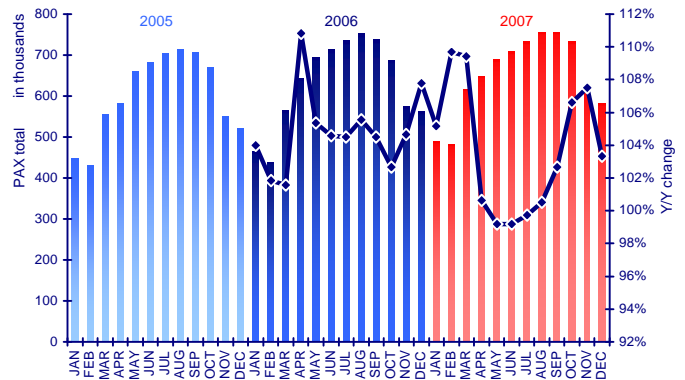
Passengers per month - Full Service Carriers



Change 2007/2006 - Full Service Carriers PAX



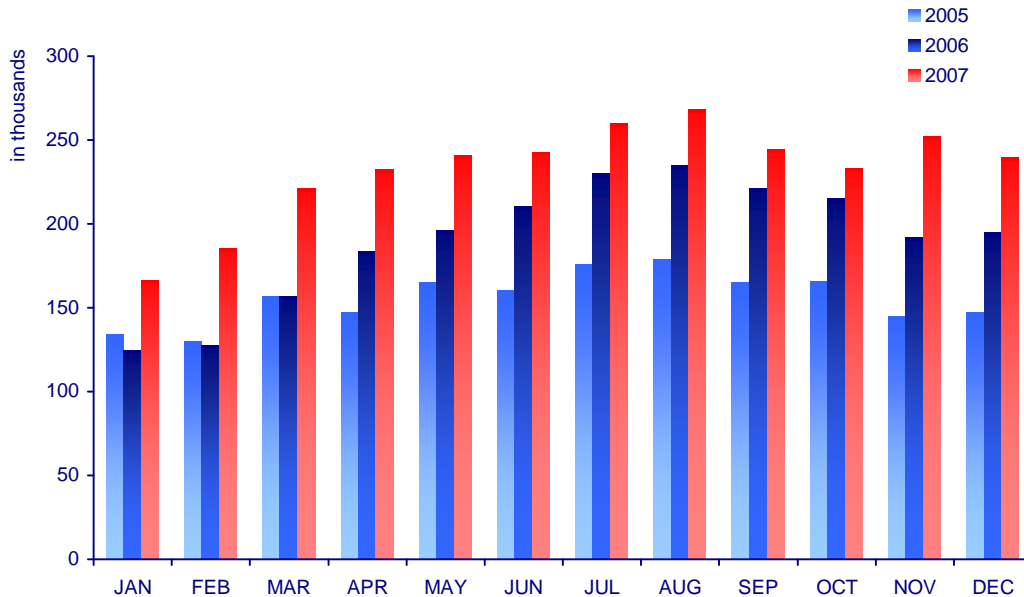
Y/Y Change - Full Service Carriers PAX



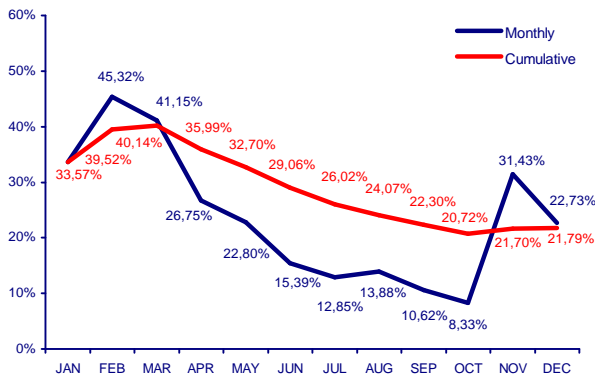
Passengers per month - Low cost carriers

Month	JAN	FEB	MAR	APR	MAY	JUN	JUL	AUG	SEP	OCT	NOV	DEC	TOTAL
2005	134 207	129 965	156 498	147 398	164 856	160 298	175 544	179 033	165 231	165 825	144 972	146 896	1 870 723
2006	124 244	127 421	156 477	183 520	196 262	210 420	230 151	235 165	221 246	215 323	192 059	194 841	2 287 129
2007	165 953	185 170	220 865	232 604	241 018	242 807	259 735	267 804	244 750	233 249	252 420	239 128	2 785 503
Change 2007/2006													
Monthly	33,57%	45,32%	41,15%	26,75%	22,80%	15,39%	12,85%	13,88%	10,62%	8,33%	31,43%	22,73%	
Cumulative	33,57%	39,52%	40,14%	35,99%	32,70%	29,06%	26,02%	24,07%	22,30%	20,72%	21,70%	21,79%	
Y/Y change													
2006/2005	92,58%	98,04%	99,99%	124,51%	119,05%	131,27%	131,11%	131,35%	133,90%	129,85%	132,48%	132,64%	
2007/2006	133,57%	145,32%	141,15%	126,75%	122,80%	115,39%	112,85%	113,88%	110,62%	108,33%	131,43%	122,73%	

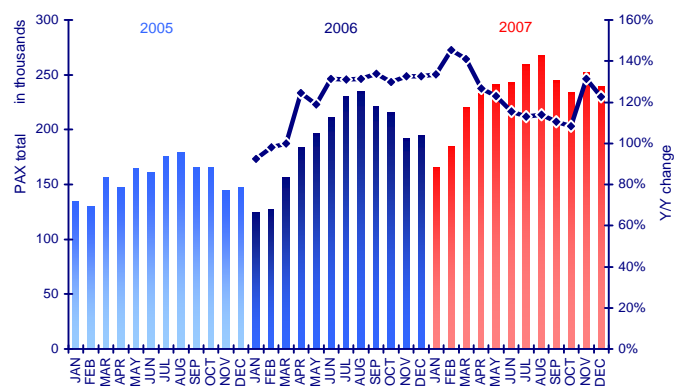
Passengers per month - Low Cost Carriers



Change 2007/2006 - Low Cost Carriers PAX



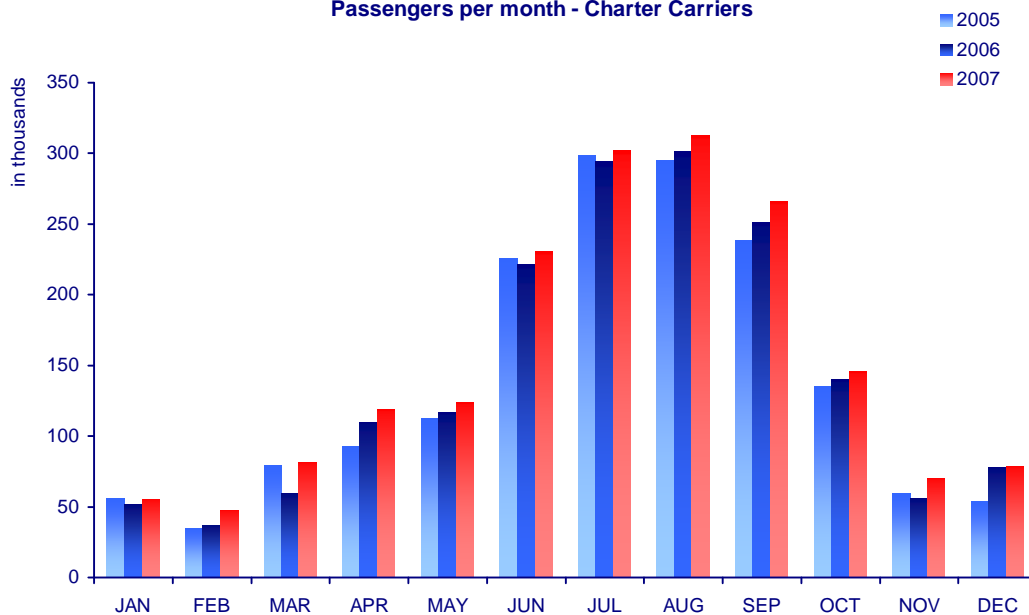
Y/Y Change - Low Cost Carriers PAX



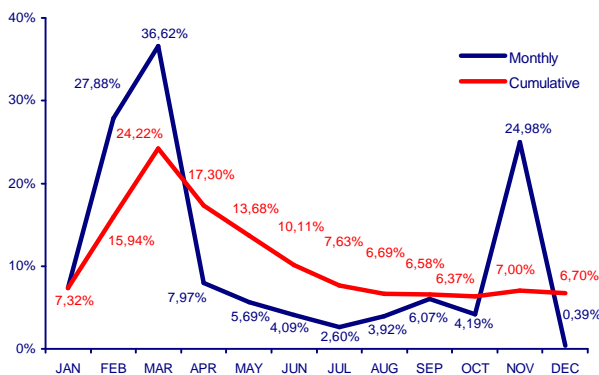
Passengers per month - Charter carriers

Month	JAN	FEB	MAR	APR	MAY	JUN	JUL	AUG	SEP	OCT	NOV	DEC	TOTAL
2005	55 535	34 792	79 111	93 037	112 474	225 429	298 734	295 339	238 247	134 871	59 185	54 045	1 680 799
2006	51 505	37 189	59 268	109 717	116 805	221 580	294 507	301 270	251 154	139 956	55 695	77 856	1 716 502
2007	55 274	47 559	80 970	118 458	123 447	230 634	302 164	313 090	266 398	145 819	69 609	78 158	1 831 580
Change 2007/2006													
Monthly	7,32%	27,88%	36,62%	7,97%	5,69%	4,09%	2,60%	3,92%	6,07%	4,19%	24,98%	0,39%	
Cumulative	7,32%	15,94%	24,22%	17,30%	13,68%	10,11%	7,63%	6,69%	6,58%	6,37%	7,00%	6,70%	
Y/Y change													
2006/2005	92,74%	106,89%	74,92%	117,93%	103,85%	98,29%	98,59%	102,01%	105,42%	103,77%	94,10%	144,06%	
2007/2006	107,32%	127,88%	136,62%	107,97%	105,69%	104,09%	102,60%	103,92%	106,07%	104,19%	124,98%	100,39%	

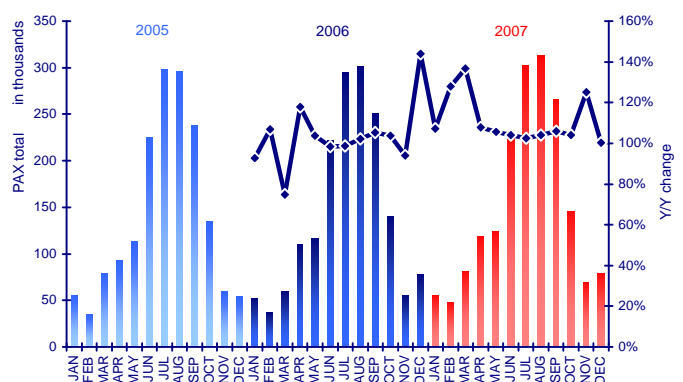
Passengers per month - Charter Carriers



Change 2007/2006 - Charter Carriers PAX



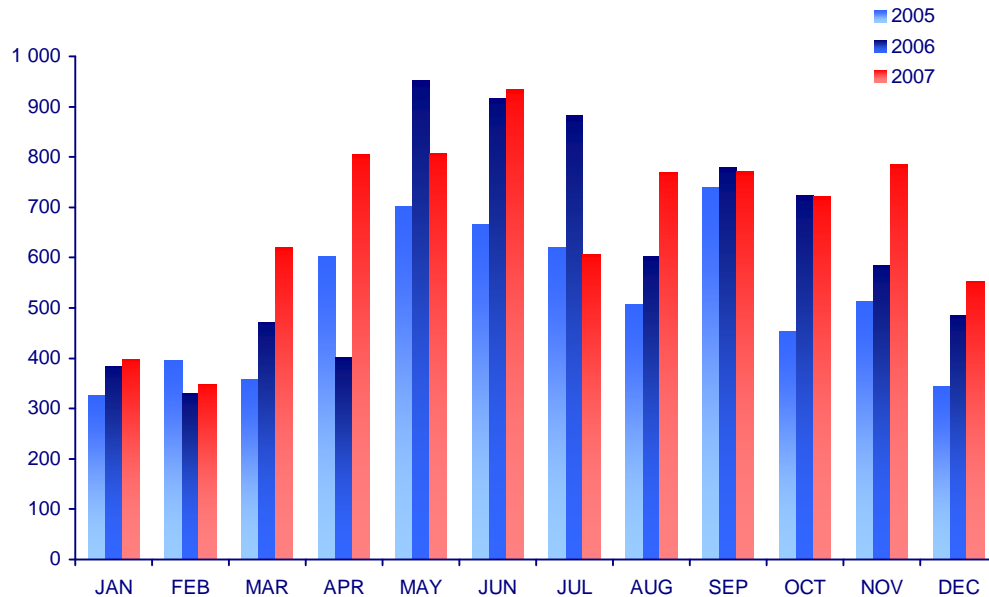
Y/Y Change - Charter Carriers PAX



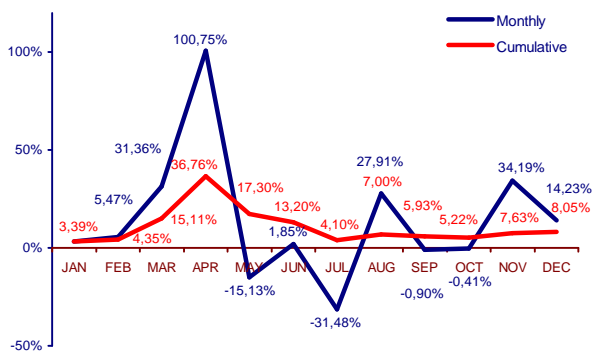
Passenger per month - General aviation

Month	JAN	FEB	MAR	APR	MAY	JUN	JUL	AUG	SEP	OCT	NOV	DEC	TOTAL
2005	327	396	359	602	701	666	620	506	739	453	513	345	6 227
2006	384	329	472	401	952	917	883	602	778	724	585	485	7 512
2007	397	347	620	805	808	934	605	770	771	721	785	554	8 117
Change 2007/2006													
Monthly	3,39%	5,47%	31,36%	100,75%	-15,13%	1,85%	-31,48%	27,91%	-0,90%	-0,41%	34,19%	14,23%	
Cumulative	3,39%	4,35%	15,11%	36,76%	17,30%	13,20%	4,10%	7,00%	5,93%	5,22%	7,63%	8,05%	
Y/Y change													
2006/2005	117,43%	83,08%	131,48%	66,61%	135,81%	137,69%	142,42%	118,97%	105,28%	159,82%	114,04%	140,58%	
2007/2006	103,39%	105,47%	131,36%	200,75%	84,87%	101,85%	68,52%	127,91%	99,10%	99,59%	134,19%	114,23%	

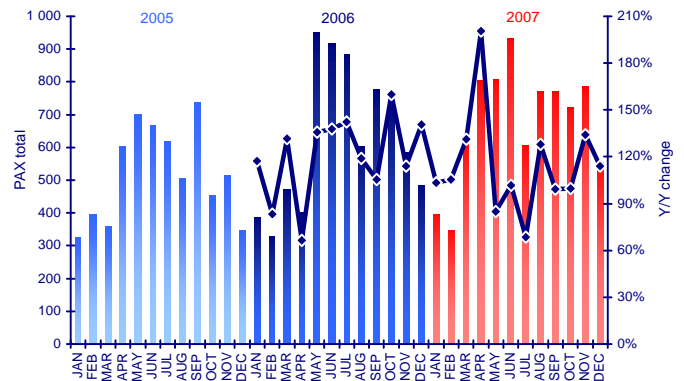
Passengers per month - General Aviation



Change 2007/2006 - General Aviation PAX



Y/Y Change - General Aviation PAX

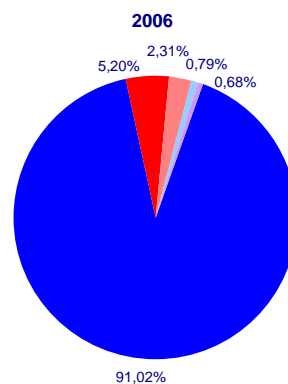
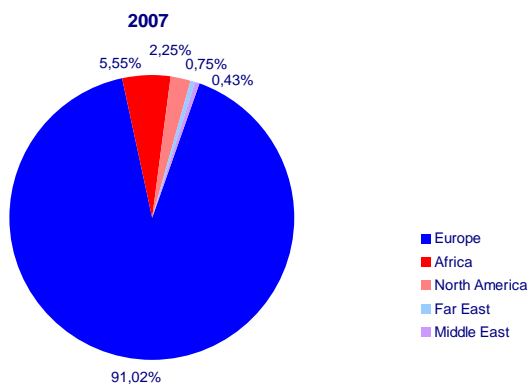
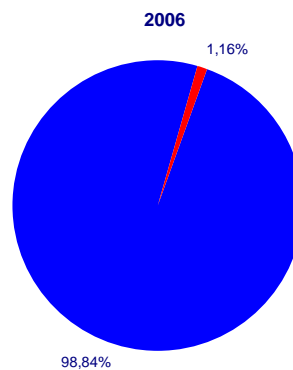
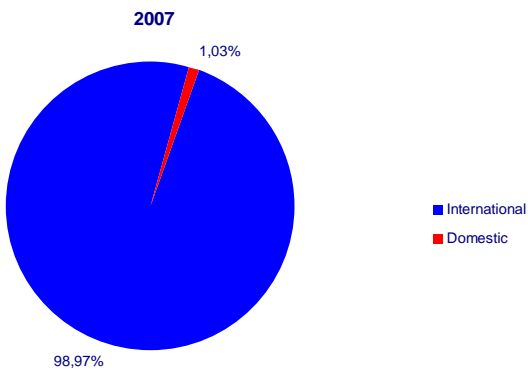


Passengers per area

Month	JAN	FEB	MAR	APR	MAY	JUN	JUL	AUG	SEP	OCT	NOV	DEC	TOTAL
Total passengers	710 023	714 384	919 192	999 808	1 054 638	1 182 640	1 295 938	1 338 362	1 268 875	1 112 097	941 616	898 681	12 436 254
Domestic	8 289	9 183	10 373	10 597	11 350	11 832	11 724	9 613	11 603	12 979	11 520	8 844	127 907
International	701 734	705 201	908 819	989 211	1 043 288	1 170 808	1 284 214	1 328 749	1 257 272	1 099 118	930 096	889 837	12 308 347
Europe	650 285	654 922	831 724	910 813	948 037	1 053 156	1 150 217	1 189 690	1 128 861	989 576	856 680	826 934	11 190 895
Africa	23 848	31 318	45 669	46 466	60 748	74 338	85 235	89 055	85 329	71 055	42 531	27 382	682 974
North America	17 109	10 593	18 964	20 447	22 349	29 540	29 959	29 720	27 496	24 717	20 691	24 618	276 203
Far East	5 919	5 136	7 658	7 475	8 903	7 774	9 880	9 986	9 012	8 053	6 207	6 116	92 119
Middle East	3 897	2 952	4 771	2 595	2 415	3 421	7 041	8 268	5 318	3 457	3 914	4 755	52 804

Geographical Split

	2006	2007	Change 07/06	Market Share
Total passengers	11 581 511	12 436 254	7,38%	100,00%
Domestic	134 844	127 907	-5,14%	1,03%
International	11 446 667	12 308 347	7,53%	98,97%
Europe	10 418 659	11 190 895	7,41%	89,99%
Africa	595 430	682 974	14,70%	5,49%
North America	264 699	276 203	4,35%	2,22%
Far East	90 342	92 119	1,97%	0,74%
Middle East	77 537	52 804	-31,90%	0,42%

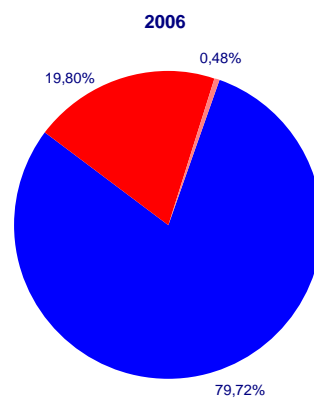
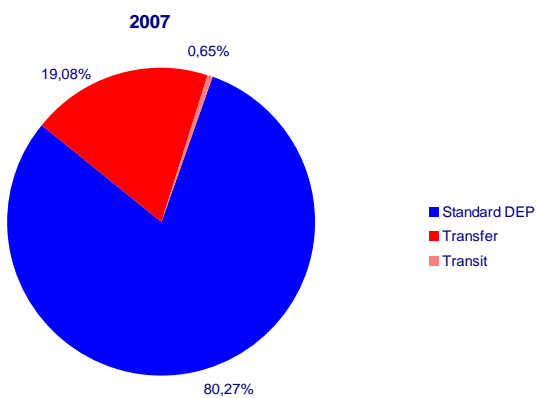


Transfer and Transit Passengers on departure

Month	JAN	FEB	MAR	APR	MAY	JUN	JUL	AUG	SEP	OCT	NOV	DEC	TOTAL
PAX on departure	381 656	357 085	449 966	497 031	535 960	607 107	645 398	666 953	625 571	548 988	469 087	428 371	6 213 173
Standard DEP	297 370	279 271	358 877	406 081	442 581	494 131	511 040	527 657	505 306	440 049	380 917	344 208	4 987 488
Transfer	78 538	73 268	87 713	88 898	90 881	108 594	132 604	136 280	117 789	106 587	83 734	80 635	1 185 521
Scheduled	78 511	73 251	87 698	88 891	90 688	108 515	132 390	136 226	117 761	106 580	83 719	80 634	1 184 864
Non-scheduled	27	17	15	7	193	79	214	54	28	7	15	1	657
Transit	5 748	4 546	3 376	2 052	2 498	4 382	1 754	3 016	2 476	2 352	4 436	3 528	40 164
Scheduled	2 886	1 462	1 448	1 038	578	912	130	955	690	694	3 496	2 556	16 845
Non-scheduled	2 862	3 084	1 928	1 014	1 920	3 470	1 624	2 061	1 786	1 658	940	972	23 319

Transfer and Transit PAX

	2006	2007	Change 07/06	Market Share
PAX on departure	5 794 320	6 213 173	7,23%	100,00%
Standard DEP	4 619 366	4 987 488	7,97%	80,27%
Transfer	1 147 108	1 185 521	3,35%	19,08%
Scheduled	1 146 560	1 184 864	3,34%	19,07%
Non-scheduled	548	657	19,89%	0,01%
Transit	27 846	40 164	44,24%	0,65%
Scheduled	10 490	16 845	60,58%	0,27%
Non-scheduled	17 356	23 319	34,36%	0,38%

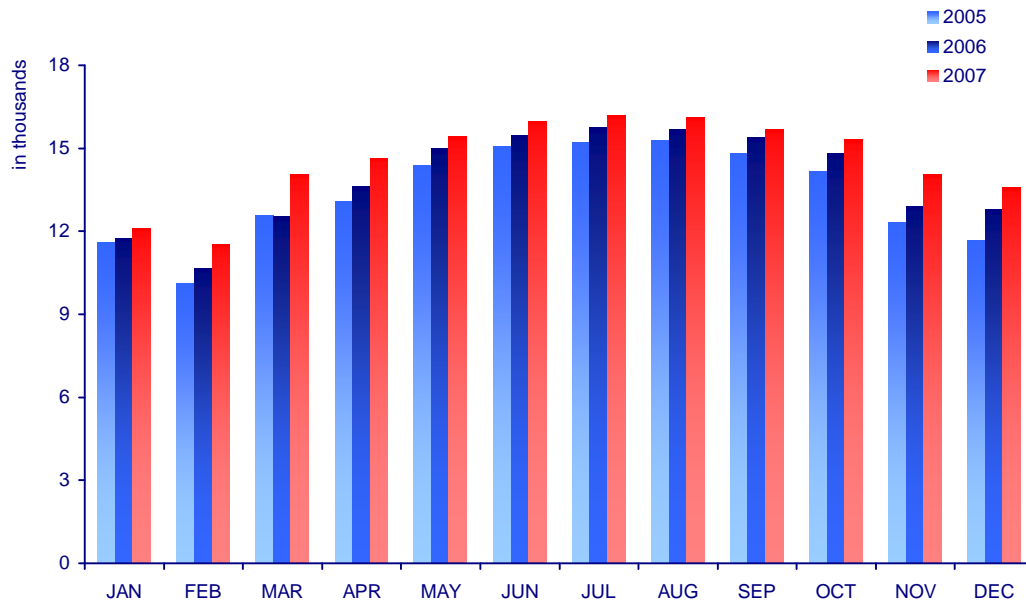


MOVEMENTS

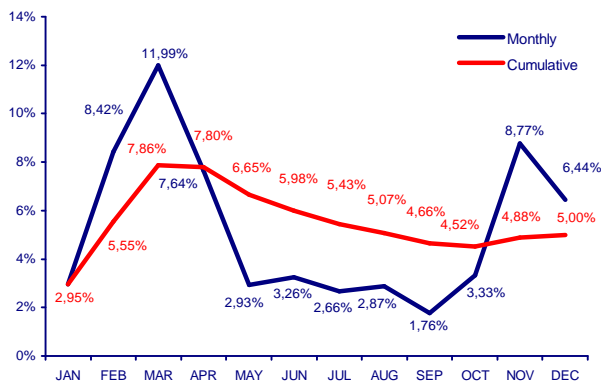
Movements per month - Total

Month	JAN	FEB	MAR	APR	MAY	JUN	JUL	AUG	SEP	OCT	NOV	DEC	TOTAL
2005	11 598	10 113	12 571	13 096	14 361	15 054	15 201	15 283	14 813	14 153	12 319	11 651	160 213
2006	11 753	10 636	12 539	13 607	15 001	15 481	15 765	15 668	15 414	14 813	12 901	12 768	166 346
2007	12 100	11 532	14 042	14 646	15 440	15 985	16 184	16 118	15 685	15 307	14 033	13 590	174 662
Change 2007/2006													
Monthly	2,95%	8,42%	11,99%	7,64%	2,93%	3,26%	2,66%	2,87%	1,76%	3,33%	8,77%	6,44%	
Cumulative	2,95%	5,55%	7,86%	7,80%	6,65%	5,98%	5,43%	5,07%	4,66%	4,52%	4,88%	5,00%	
Y/Y change													
2006/2005	101,34%	105,17%	99,75%	103,90%	104,46%	102,84%	103,71%	102,52%	104,06%	104,66%	104,72%	109,59%	
2007/2006	102,95%	108,42%	111,99%	107,64%	102,93%	103,26%	102,66%	102,87%	101,76%	103,33%	108,77%	106,44%	

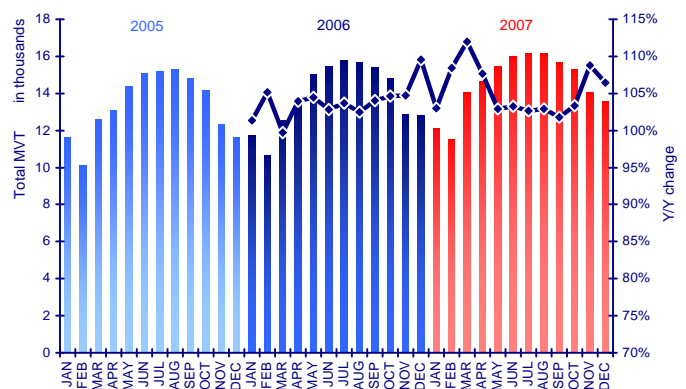
Movements per month - Total



Change 2007/2006 - Total MVT



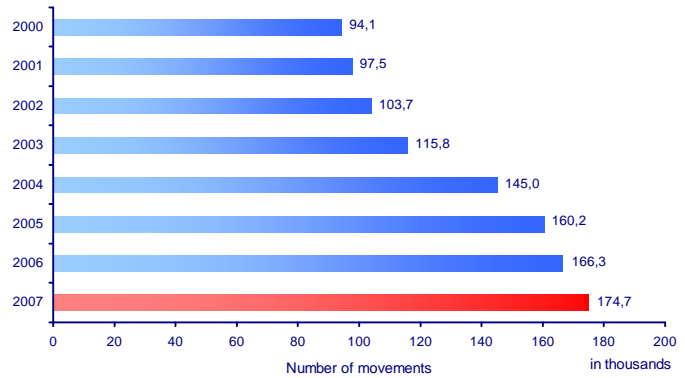
Y/Y Change - Total MVT



Movements Development 2000 - 2007

2000	94 117
2001	97 542
2002	103 687
2003	115 756
2004	144 962
2005	160 213
2006	166 346
2007	174 662

Movements Development 2000-2007



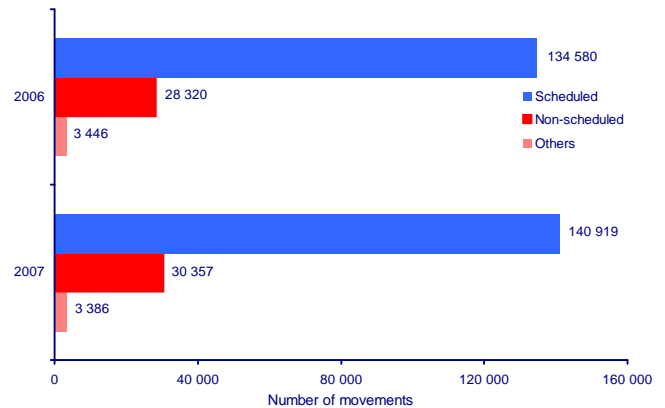
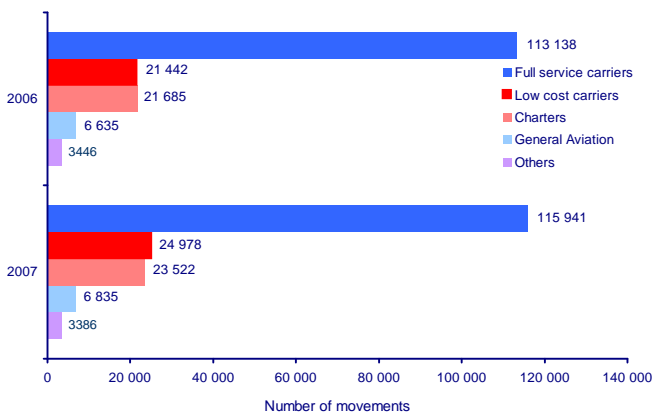
Movements per traffic type

2007

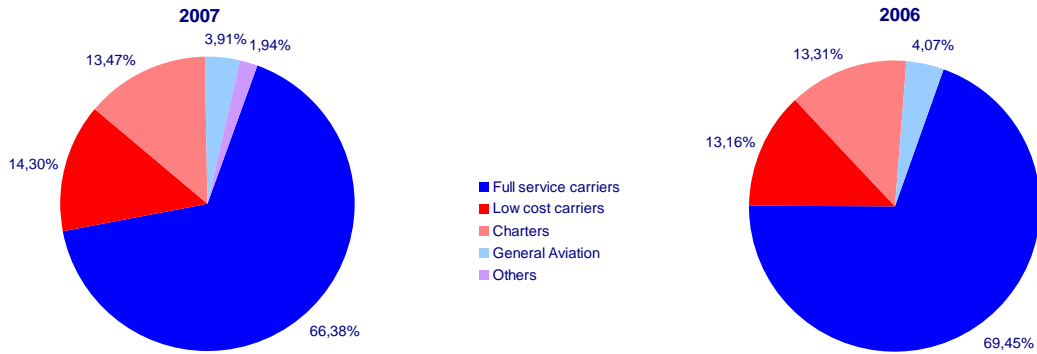
Month	JAN	FEB	MAR	APR	MAY	JUN	JUL	AUG	SEP	OCT	NOV	DEC	TOTAL
Total movements	12 100	11 532	14 042	14 646	15 440	15 985	16 184	16 118	15 685	15 307	14 033	13 590	174 662
Scheduled	10 256	9 964	11 619	11 880	12 497	12 225	12 446	12 435	12 020	12 338	11 790	11 449	140 919
Full service carriers	8 539	8 295	9 650	9 746	10 254	10 039	10 260	10 299	9 965	10 262	9 468	9 172	115 949
Low cost carriers	1 717	1 669	1 969	2 134	2 243	2 186	2 186	2 136	2 055	2 076	2 322	2 277	24 970
Non-scheduled	1 612	1 392	2 055	2 385	2 589	3 406	3 444	3 417	3 389	2 721	1 996	1 951	30 357
Charters	1 239	1 047	1 409	1 719	1 991	2 472	2 893	2 855	2 841	2 106	1 401	1 549	23 522
General Aviation	373	345	646	666	598	934	551	562	548	615	595	402	6 835
Others	232	176	368	381	354	354	294	266	276	248	247	190	3 386
Cargo	251	243	274	250	264	257	251	291	244	281	267	223	3 096

	2006	2007	Change 07/06	Market Share
Total movements	166 346	174 662	5,00%	100,00%
Scheduled	134 580	140 919	4,71%	80,68%
Full service carriers	113 138	115 949	2,48%	66,38%
Low cost carriers	21 442	24 970	16,45%	14,30%
Non-scheduled	28 320	30 357	7,19%	17,38%
Charters	21 685	23 522	8,47%	13,47%
General Aviation	6 635	6 835	3,01%	3,91%
Others	3 446	3 386	-1,74%	1,94%

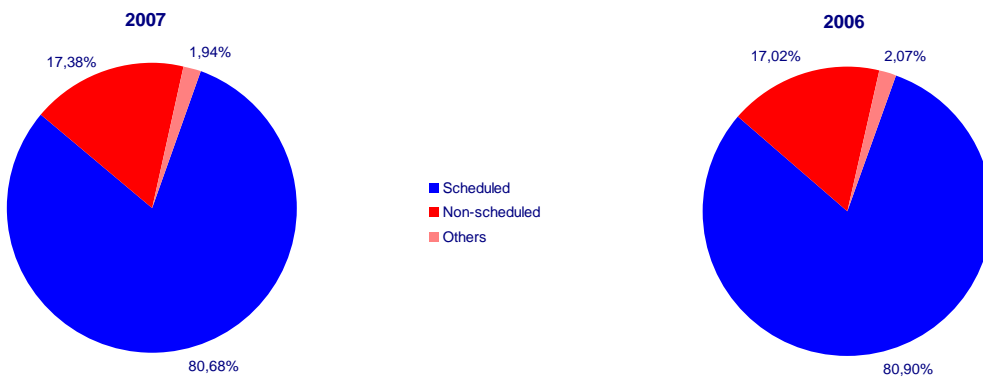
Trend 2006-2007



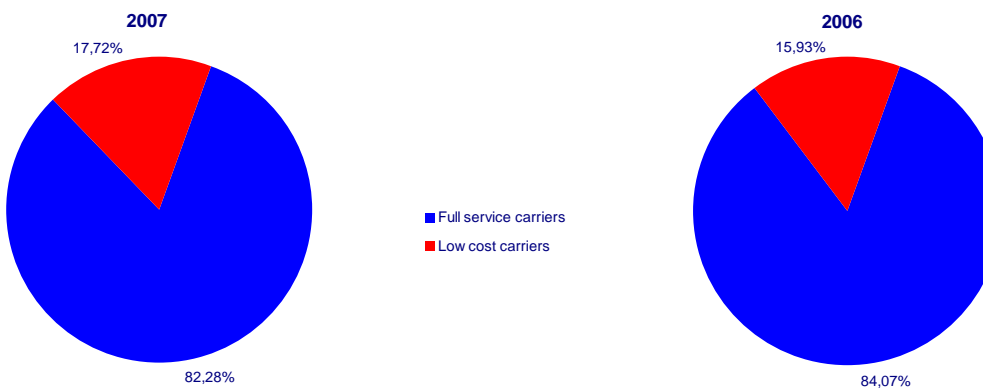
Traffic Types Split



Scheduled vs. Non-scheduled Traffic



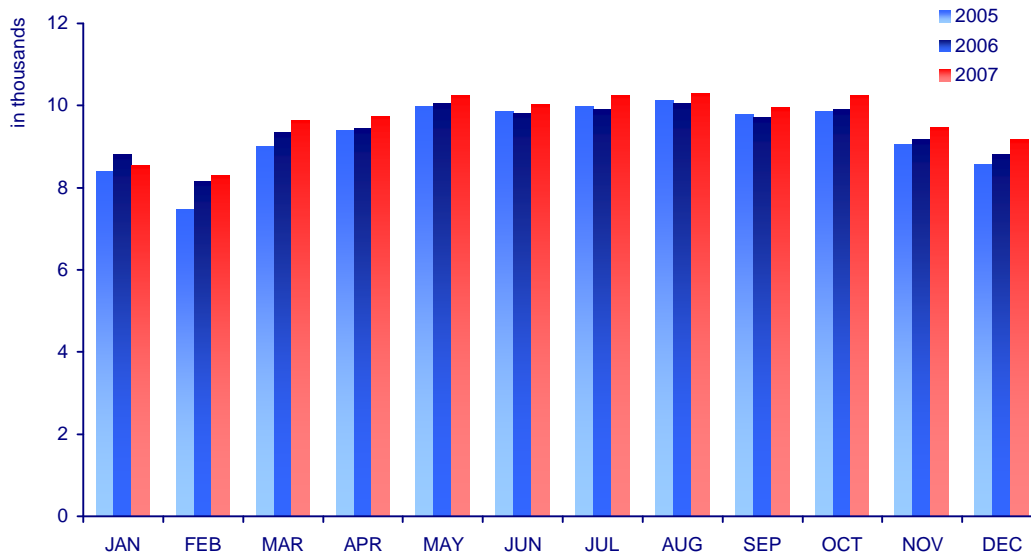
Scheduled Traffic - Full Service vs. Low Cost Carriers



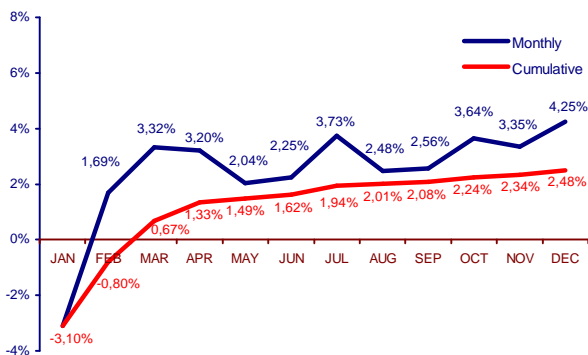
Movements per month - Full service carriers

Month	JAN	FEB	MAR	APR	MAY	JUN	JUL	AUG	SEP	OCT	NOV	DEC	TOTAL
2005	8 400	7 463	9 009	9 383	9 981	9 855	9 985	10 111	9 771	9 859	9 059	8 572	111 448
2006	8 812	8 157	9 340	9 444	10 049	9 818	9 891	10 050	9 716	9 902	9 161	8 798	113 138
2007	8 539	8 295	9 650	9 746	10 254	10 039	10 260	10 299	9 965	10 262	9 468	9 172	115 949
Change 2007/2006													
Monthly	-3,10%	1,69%	3,32%	3,20%	2,04%	2,25%	3,73%	2,48%	2,56%	3,64%	3,35%	4,25%	
Cumulative	-3,10%	-0,80%	0,67%	1,33%	1,49%	1,62%	1,94%	2,01%	2,08%	2,24%	2,34%	2,48%	
Y/Y change													
2006/2005	104,90%	109,30%	103,67%	100,65%	100,68%	99,62%	99,06%	99,40%	99,44%	100,44%	101,13%	102,64%	
2007/2006	96,90%	101,69%	103,32%	103,20%	102,04%	102,25%	103,73%	102,48%	102,56%	103,64%	103,35%	104,25%	

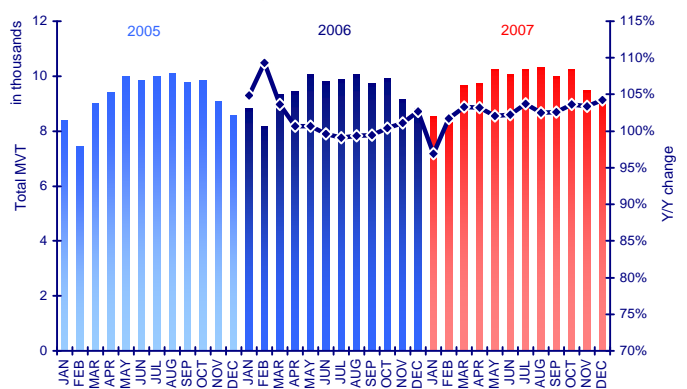
Movements per month - Full Service Carriers



Change 2007/2006 - Full Service Carriers MVT



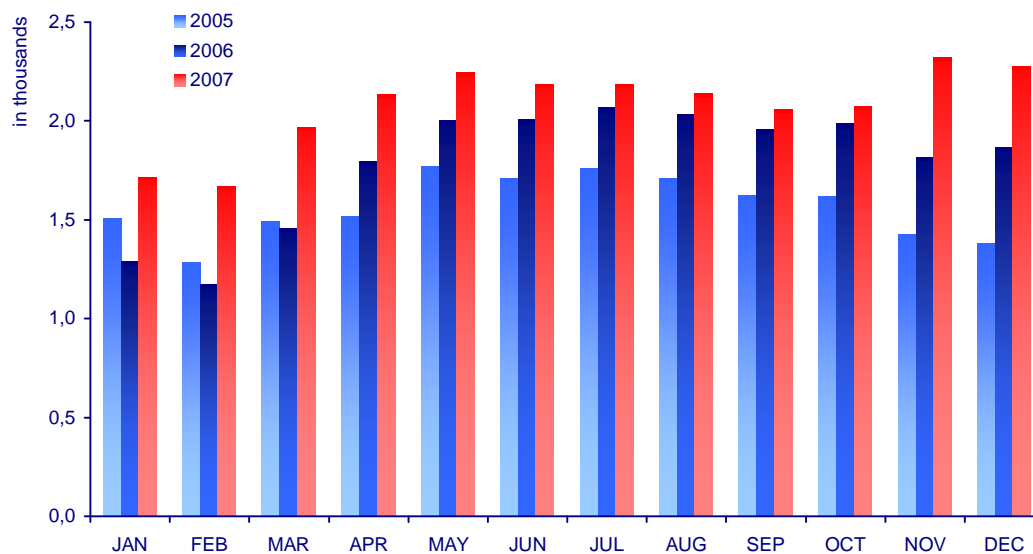
Y/Y Change - Full Service Carriers MVT



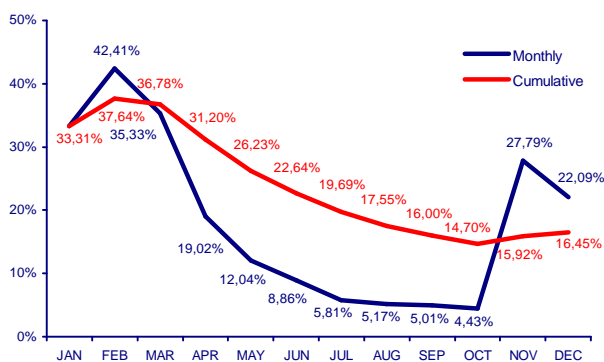
Movements per month - Low cost carriers

Month	JAN	FEB	MAR	APR	MAY	JUN	JUL	AUG	SEP	OCT	NOV	DEC	TOTAL
2005	1 509	1 286	1 492	1 518	1 772	1 708	1 759	1 707	1 623	1 619	1 425	1 380	18 798
2006	1 288	1 172	1 455	1 793	2 002	2 008	2 066	2 031	1 957	1 988	1 817	1 865	21 442
2007	1 717	1 669	1 969	2 134	2 243	2 186	2 186	2 136	2 055	2 076	2 322	2 277	24 970
Change 2007/2006													
Monthly	33,31%	42,41%	35,33%	19,02%	12,04%	8,86%	5,81%	5,17%	5,01%	4,43%	27,79%	22,09%	
Cumulative	33,31%	37,64%	36,78%	31,20%	26,23%	22,64%	19,69%	17,55%	16,00%	14,70%	15,92%	16,45%	
Y/Y change													
2006/2005	85,35%	91,14%	97,52%	118,12%	112,98%	117,56%	117,45%	118,98%	120,58%	122,79%	127,51%	135,14%	
2007/2006	133,31%	142,41%	135,33%	119,02%	112,04%	108,86%	105,81%	105,17%	105,01%	104,43%	127,79%	122,09%	

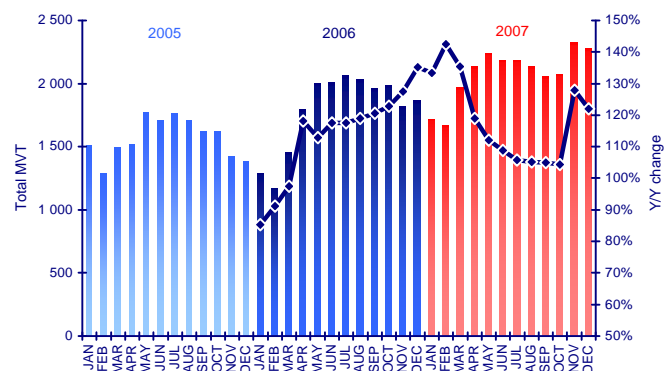
Movements per month - Low Cost Carriers



Change 2007/2006 - Low Cost Carriers MVT



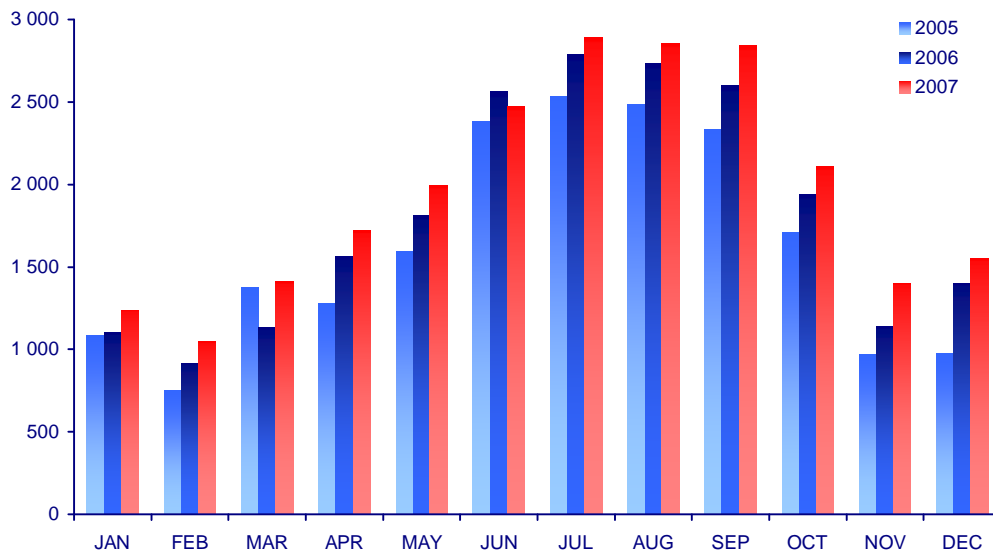
Y/Y Change - Low Cost Carriers MVT



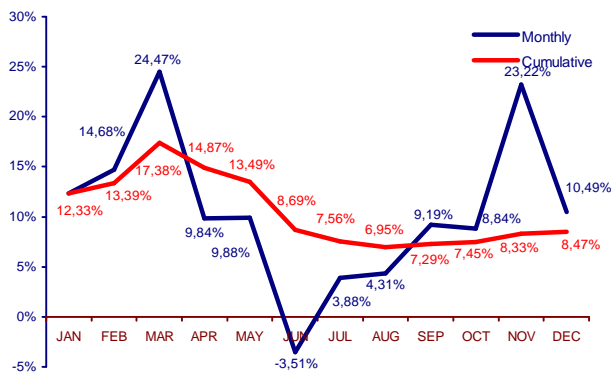
Movements per month - Charter carriers

Month	JAN	FEB	MAR	APR	MAY	JUN	JUL	AUG	SEP	OCT	NOV	DEC	TOTAL
2005	1 084	754	1 372	1 281	1 595	2 381	2 532	2 487	2 333	1 711	967	974	19 471
2006	1 103	913	1 132	1 565	1 812	2 562	2 785	2 737	2 602	1 935	1 137	1 402	21 685
2007	1 239	1 047	1 409	1 719	1 991	2 472	2 893	2 855	2 841	2 106	1 401	1 549	23 522
Change 2007/2006													
Monthly	12,33%	14,68%	24,47%	9,84%	9,88%	-3,51%	3,88%	4,31%	9,19%	8,84%	23,22%	10,49%	
Cumulative	12,33%	13,39%	17,38%	14,87%	13,49%	8,69%	7,56%	6,95%	7,29%	7,45%	8,33%	8,47%	
Y/Y change													
2006/2005	101,75%	121,09%	82,51%	122,17%	113,61%	107,60%	109,99%	110,05%	111,53%	113,09%	117,58%	143,94%	
2007/2006	112,33%	114,68%	124,47%	109,84%	109,88%	96,49%	103,88%	104,31%	109,19%	108,84%	123,22%	110,49%	

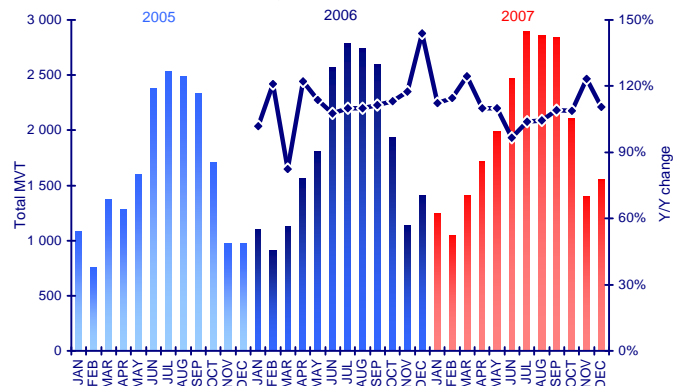
Movements per month - Charter Carriers



Change 2007/2006 - Charter Carriers MVT



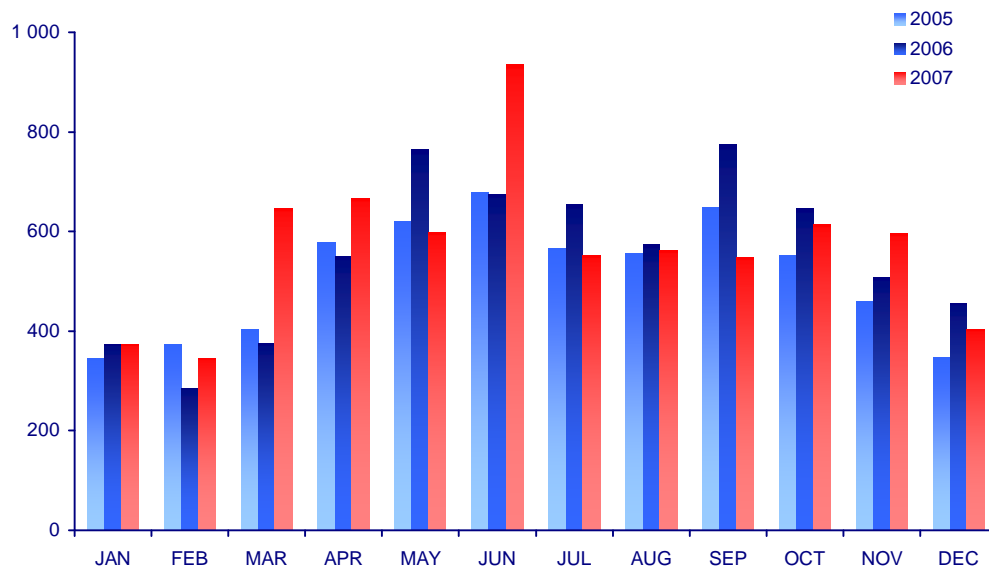
Y/Y Change - Charter Carriers MVT



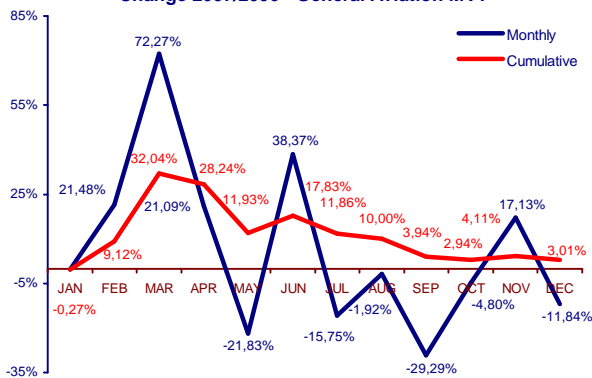
Movements per month - General aviation

Month	JAN	FEB	MAR	APR	MAY	JUN	JUL	AUG	SEP	OCT	NOV	DEC	TOTAL
2005	344	373	402	579	621	679	566	555	648	551	460	347	6 125
2006	374	284	375	550	765	675	654	573	775	646	508	456	6 635
2007	373	345	646	666	598	934	551	562	548	615	595	402	6 835
Change 2007/2006													
Monthly	-0,27%	21,48%	72,27%	21,09%	-21,83%	38,37%	-15,75%	-1,92%	-29,29%	-4,80%	17,13%	-11,84%	
Cumulative	-0,27%	9,12%	32,04%	28,24%	11,93%	17,83%	11,86%	10,00%	3,94%	2,94%	4,11%	3,01%	
Y/Y change													
2006/2005	108,72%	76,14%	93,28%	94,99%	123,19%	99,41%	115,55%	103,24%	119,60%	117,24%	110,43%	131,41%	
2007/2006	99,73%	121,48%	172,27%	121,09%	78,17%	138,37%	84,25%	98,08%	70,71%	95,20%	117,13%	88,16%	

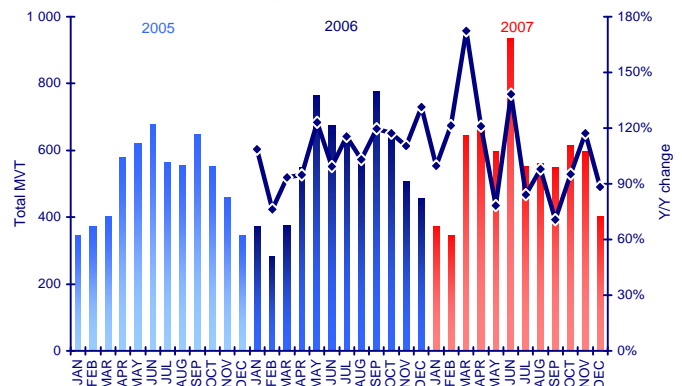
Movements per month - General Aviation



Change 2007/2006 - General Aviation MVT



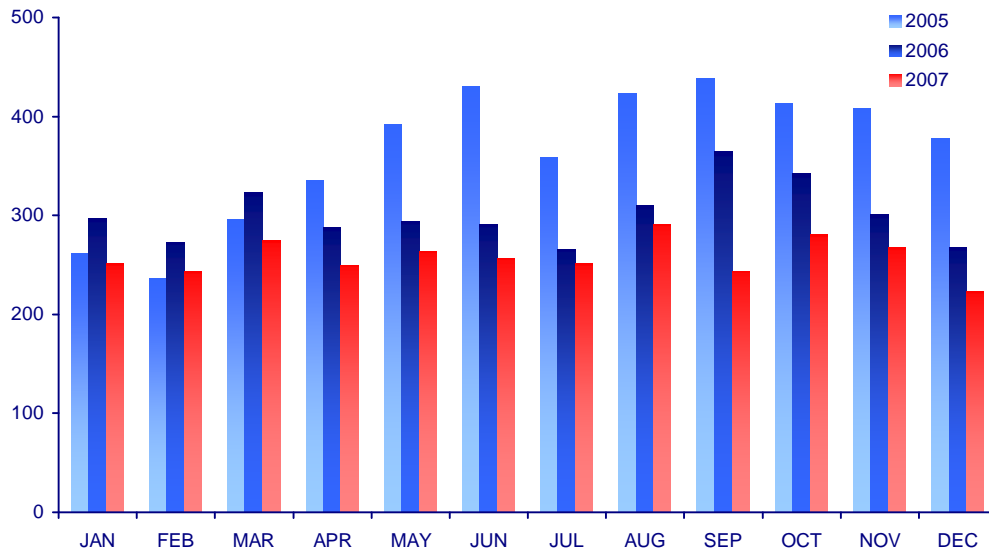
Y/Y Change - General Aviation MVT



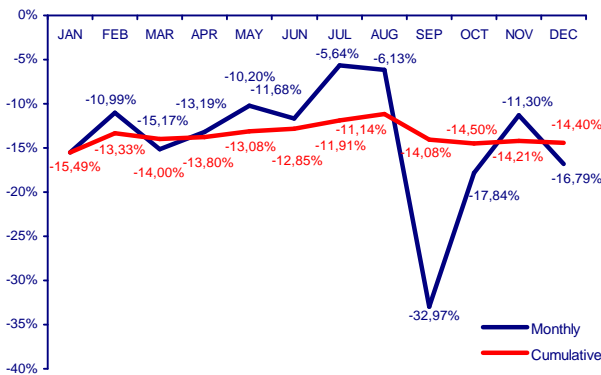
Movements per month - Cargo

Month	JAN	FEB	MAR	APR	MAY	JUN	JUL	AUG	SEP	OCT	NOV	DEC	TOTAL
2005	261	237	296	335	392	431	359	423	438	413	408	378	4 371
2006	297	273	323	288	294	291	266	310	364	342	301	268	3 617
2007	251	243	274	250	264	257	251	291	244	281	267	223	3 096
Change 2007/2006													
Monthly	-15,49%	-10,99%	-15,17%	-13,19%	-10,20%	-11,68%	-5,64%	-6,13%	-32,97%	-17,84%	-11,30%	-16,79%	
Cumulative	-15,49%	-13,33%	-14,00%	-13,80%	-13,08%	-12,85%	-11,91%	-11,14%	-14,08%	-14,50%	-14,21%	-14,40%	
Y/Y change													
2006/2005	113,79%	115,19%	109,12%	85,97%	75,00%	67,52%	74,09%	73,29%	83,11%	82,81%	73,77%	70,90%	
2007/2006	84,51%	89,01%	84,83%	86,81%	89,80%	88,32%	94,36%	93,87%	67,03%	82,16%	88,70%	83,21%	

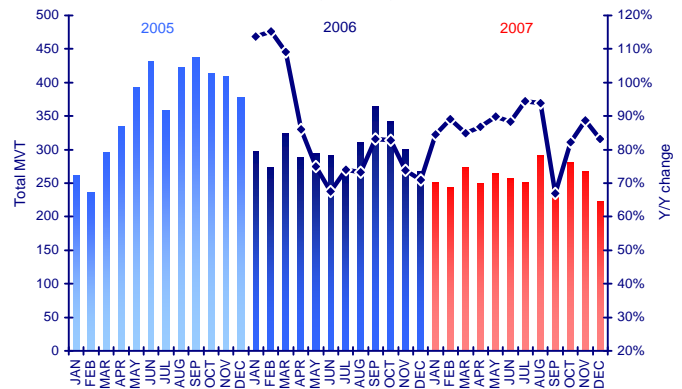
Movements per month - Cargo



Change 2007/2006 - Cargo MVT



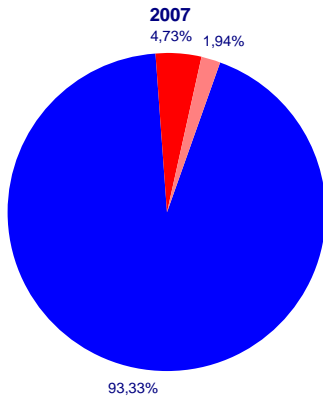
Y/Y Change - Cargo MVT



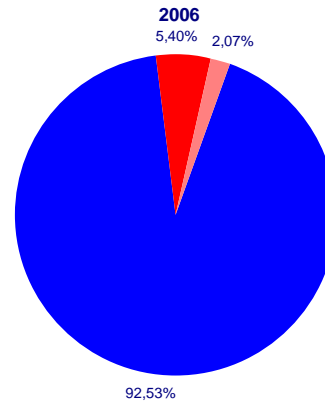
Movements per area

Month	JAN	FEB	MAR	APR	MAY	JUN	JUL	AUG	SEP	OCT	NOV	DEC	TOTAL
Total movements	12 100	11 532	14 042	14 646	15 440	15 985	16 184	16 118	15 685	15 307	14 033	13 590	174 662
International	11 236	10 755	12 810	13 544	14 407	14 912	15 208	15 200	14 707	14 326	13 094	12 807	163 006
Domestic	632	601	864	721	679	719	682	652	702	733	692	593	8 270
Other	232	176	368	381	354	354	294	266	276	248	247	190	3 386

	2006	2007	Change 07/06	Market Share
Total movements	166 346	174 662	5,00%	100,00%
International	153 916	163 006	5,91%	93,33%
Domestic	8 984	8 270	-7,95%	4,73%
Other	3 446	3 386	-1,74%	1,94%



■ International
■ Domestic
■ Other

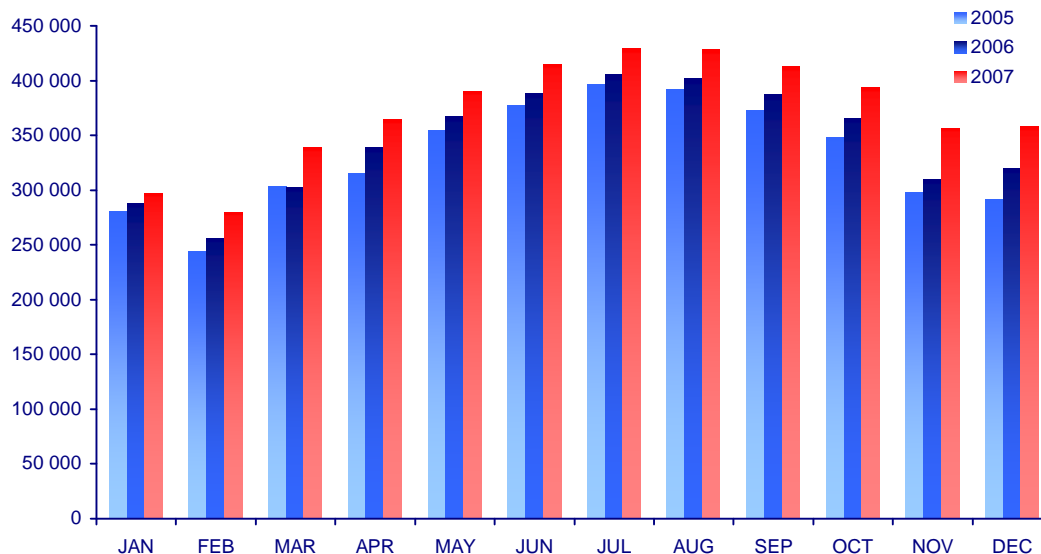


MTOW

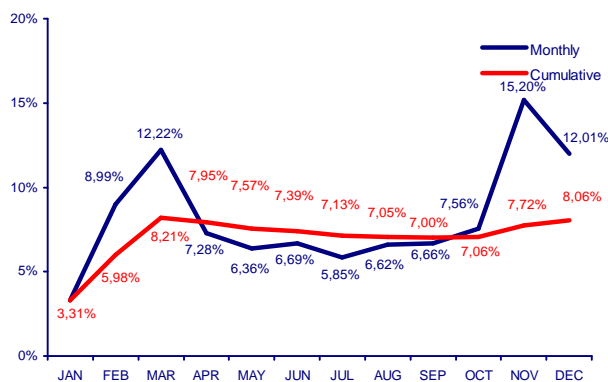
Total landings of aircrafts in MTOW per month (in tonnes)

Month	JAN	FEB	MAR	APR	MAY	JUN	JUL	AUG	SEP	OCT	NOV	DEC	TOTAL
2005	280 470	243 627	303 023	315 856	354 089	377 286	396 587	392 278	373 126	348 534	297 224	290 979	3 973 079
2006	287 661	256 097	302 165	339 174	366 821	388 694	405 304	401 796	386 855	365 597	309 629	319 463	4 129 256
2007	297 171	279 128	339 079	363 875	390 156	414 694	429 009	428 390	412 629	393 239	356 685	357 832	4 461 887
Change 2007/2006													
Monthly	3,31%	8,99%	12,22%	7,28%	6,36%	6,69%	5,85%	6,62%	6,66%	7,56%	15,20%	12,01%	
Cumulative	3,31%	5,98%	8,21%	7,95%	7,57%	7,39%	7,13%	7,05%	7,00%	7,06%	7,72%	8,06%	
Y/Y change													
2006/2005	102,56%	105,12%	99,72%	107,38%	103,60%	103,02%	102,20%	102,43%	103,68%	104,90%	104,17%	109,79%	
2007/2006	103,31%	108,99%	112,22%	107,28%	106,36%	106,69%	105,85%	106,62%	106,66%	107,56%	115,20%	112,01%	

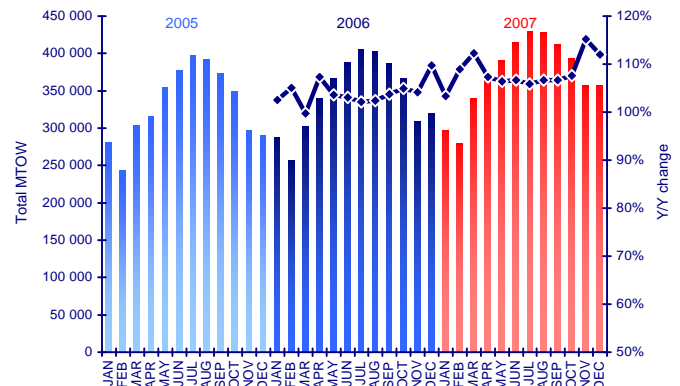
MTOW per month - Total



Change 2007/2006 - Total MTOW

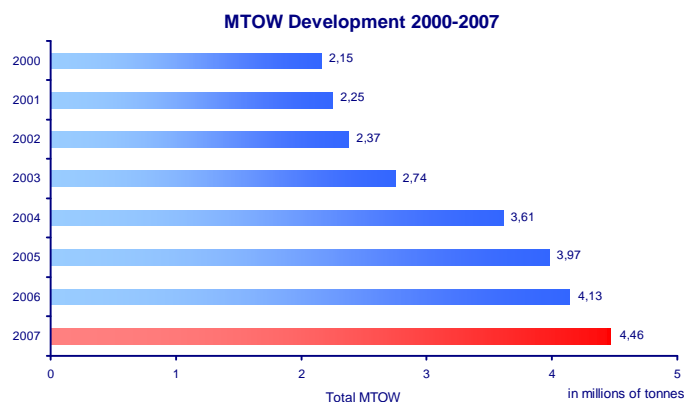


Y/Y Change - Total MTOW



MTOW Development 2000 - 2007

2000	2 153 053
2001	2 246 126
2002	2 374 268
2003	2 744 070
2004	3 607 407
2005	3 973 079
2006	4 129 256
2007	4 461 887

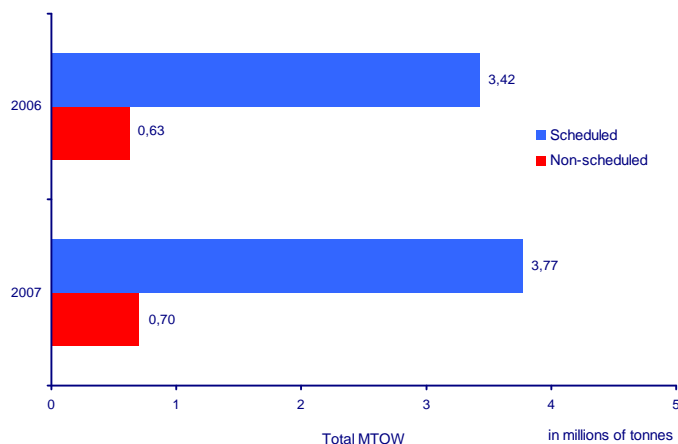
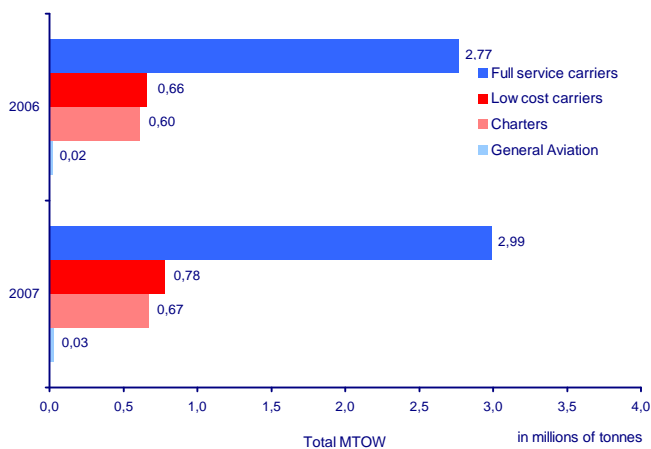


MTOW per traffic type in 2007 (tonnes)

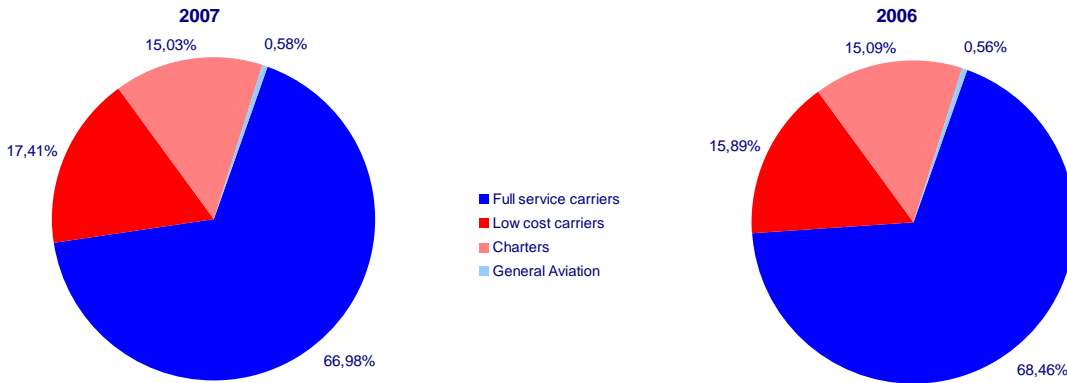
Month	JAN	FEB	MAR	APR	MAY	JUN	JUL	AUG	SEP	OCT	NOV	DEC	TOTAL
MTOW total	297 171	279 128	339 079	363 875	390 156	414 694	429 009	428 390	412 629	393 239	356 685	357 832	4 461 887
Scheduled	263 016	253 379	301 884	313 823	333 134	330 546	337 430	336 497	325 885	333 777	321 628	314 383	3 765 382
Full service carriers	211 977	203 088	241 992	248 009	263 575	262 723	268 990	268 660	260 875	268 046	248 129	242 306	2 988 370
Low cost carriers	51 039	50 291	59 892	65 814	69 559	67 823	68 440	67 837	65 010	65 731	73 499	72 077	777 012
Non-scheduled	34 155	25 749	37 195	50 052	57 022	84 148	91 579	91 893	86 744	59 462	35 057	43 449	696 505
Charters	32 739	24 716	35 286	48 077	54 318	80 826	88 927	89 513	84 625	57 164	32 701	41 591	670 483
General Aviation	1 416	1 033	1 909	1 975	2 704	3 322	2 652	2 380	2 119	2 298	2 356	1 858	26 022
Cargo	8 171	7 387	9 305	8 741	8 938	8 708	8 615	9 563	8 880	9 196	10 254	4 949	102 707

	2006	2007	Change 07/06	Market Share
MTOW total	4 129 256	4 461 887	8,06%	100,00%
Scheduled	3 483 056	3 765 382	8,11%	84,39%
Full service carriers	2 827 030	2 988 370	5,71%	66,98%
Low cost carriers	656 026	777 012	18,44%	17,41%
Non-scheduled	646 200	696 505	7,78%	15,61%
Charters	623 084	670 483	7,61%	15,03%
General Aviation	23 116	26 022	12,57%	0,58%
Cargo	126 595	102 707	-18,87%	2,30%

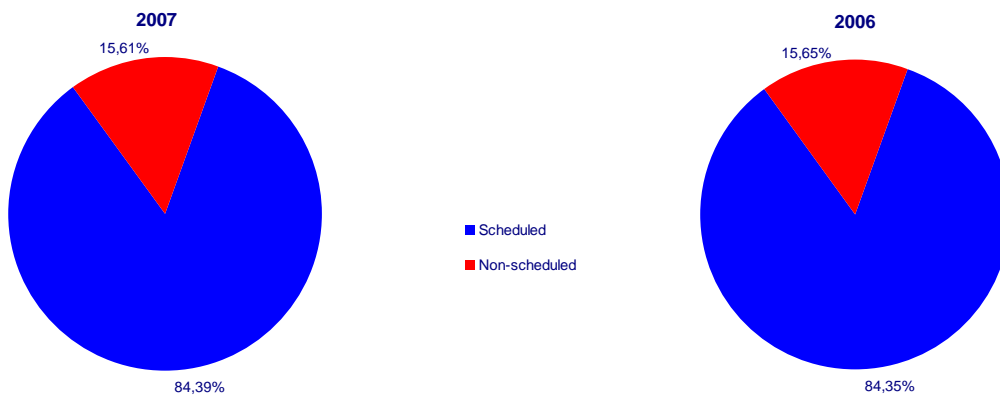
Trend 2006-2007



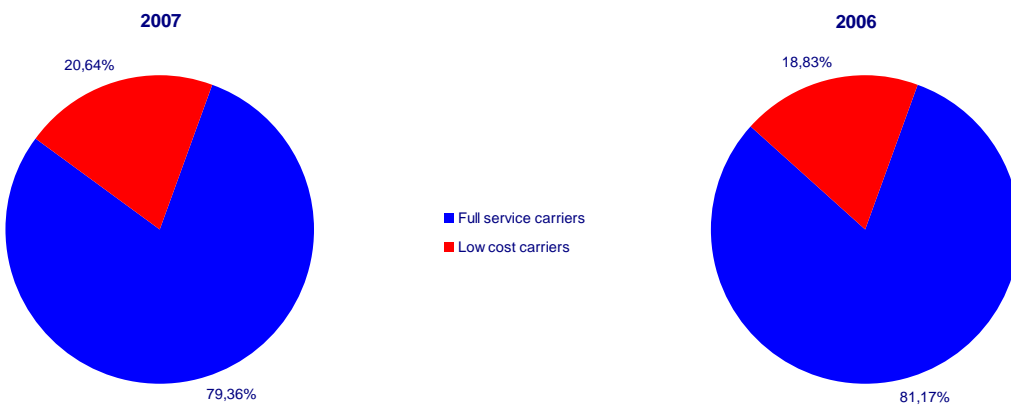
Traffic Types Split



Scheduled vs. Non-scheduled Traffic



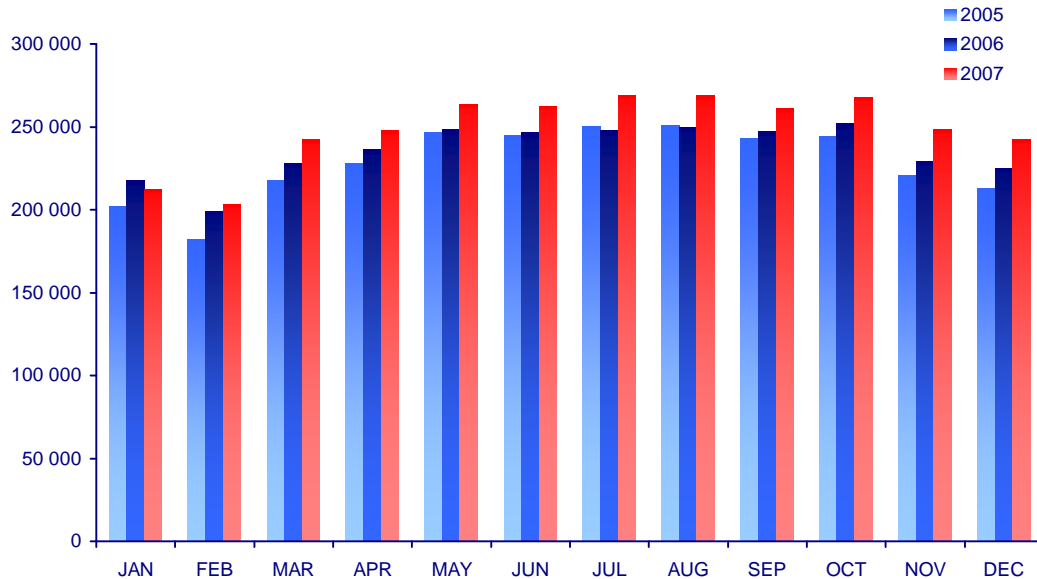
Scheduled Traffic - Full Service vs. Low Cost Carriers



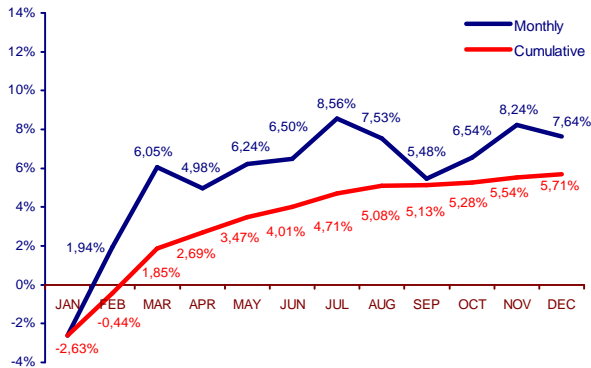
MTOW per month - Full service carriers

Month	JAN	FEB	MAR	APR	MAY	JUN	JUL	AUG	SEP	OCT	NOV	DEC	TOTAL
2005	201 898	181 896	217 563	227 703	246 904	244 782	250 106	250 480	243 075	244 220	220 761	212 698	2 742 086
2006	217 693	199 223	228 179	236 250	248 103	246 694	247 776	249 855	247 332	251 591	229 233	225 101	2 827 030
2007	211 977	203 088	241 992	248 009	263 575	262 723	268 990	268 660	260 875	268 046	248 129	242 306	2 988 370
Change 2007/2006													
Monthly	-2,63%	1,94%	6,05%	4,98%	6,24%	6,50%	8,56%	7,53%	5,48%	6,54%	8,24%	7,64%	
Cumulative	-2,63%	-0,44%	1,85%	2,69%	3,47%	4,01%	4,71%	5,08%	5,13%	5,28%	5,54%	5,71%	
Y/Y change													
2006/2005	107,82%	109,53%	104,88%	103,75%	100,49%	100,78%	99,07%	99,75%	101,75%	103,02%	103,84%	105,83%	
2007/2006	97,37%	101,94%	106,05%	104,98%	106,24%	106,50%	108,56%	107,53%	105,48%	106,54%	108,24%	107,64%	

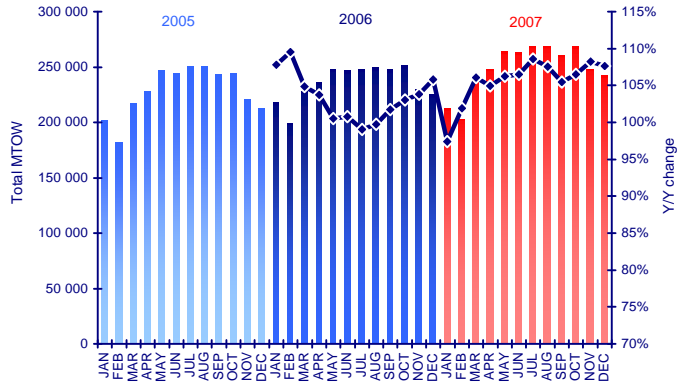
MTOW per month - Full Service Carriers



Change 2007/2006 - Full Service Carriers MTOW



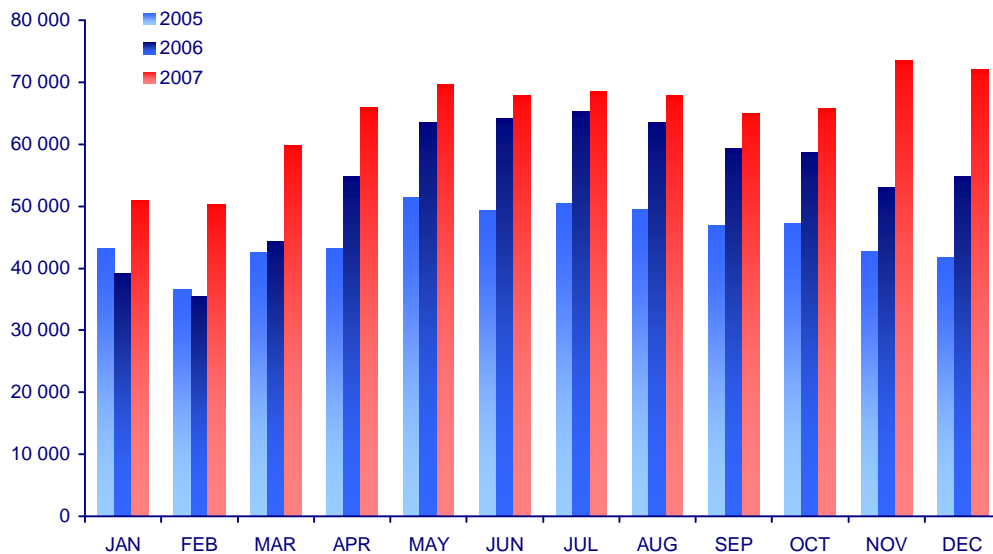
Y/Y Change - Full Service Carriers MTOW



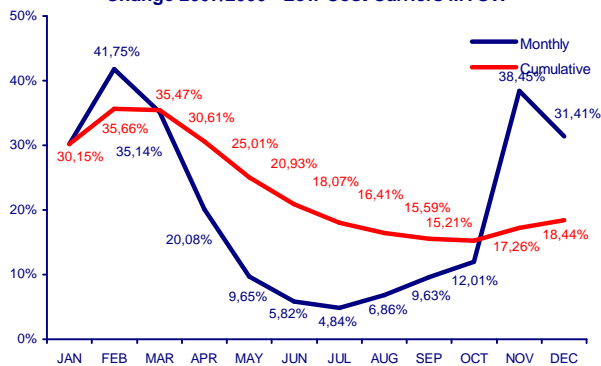
MTOW per month - Low cost carriers

Month	JAN	FEB	MAR	APR	MAY	JUN	JUL	AUG	SEP	OCT	NOV	DEC	TOTAL
2005	43 254	36 677	42 481	43 198	51 389	49 291	50 405	49 415	46 956	47 196	42 681	41 670	544 613
2006	39 215	35 479	44 319	54 809	63 435	64 091	65 278	63 480	59 299	58 685	53 086	54 850	656 026
2007	51 039	50 291	59 892	65 814	69 559	67 823	68 440	67 837	65 010	65 731	73 499	72 077	777 012
Change 2007/2006													
Monthly	30,15%	41,75%	35,14%	20,08%	9,65%	5,82%	4,84%	6,86%	9,63%	12,01%	38,45%	31,41%	
Cumulative	30,15%	35,66%	35,47%	30,61%	25,01%	20,93%	18,07%	16,41%	15,59%	15,21%	17,26%	18,44%	
Y/Y change													
2006/2005	90,66%	96,73%	104,33%	126,88%	123,44%	130,03%	129,51%	128,46%	126,29%	124,34%	124,38%	131,63%	
2007/2006	130,15%	141,75%	135,14%	120,08%	109,65%	105,82%	104,84%	106,86%	109,63%	112,01%	138,45%	131,41%	

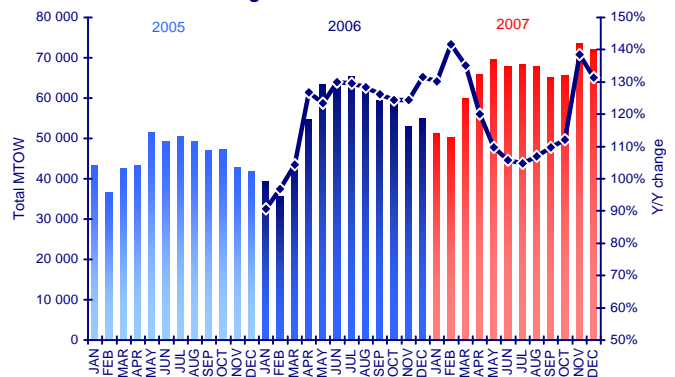
MTOW per month - Low Cost Carriers



Change 2007/2006 - Low Cost Carriers MTOW



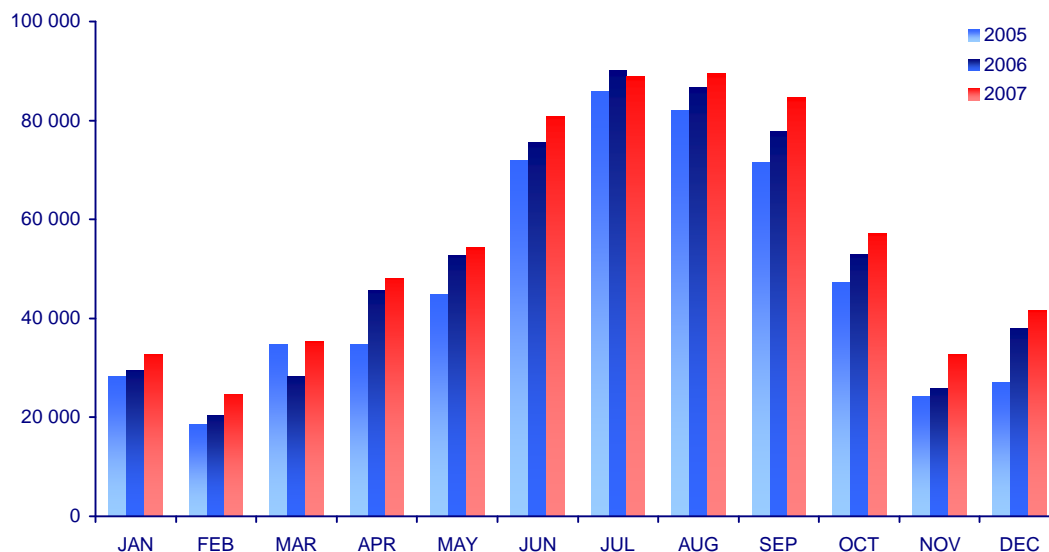
Y/Y Change - Low Cost Carriers MTOW



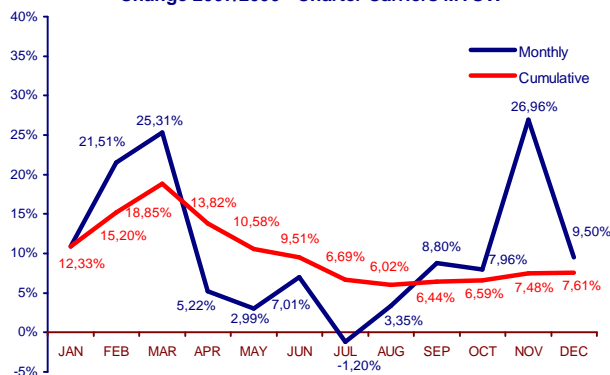
MTOW per month - Charter carriers

Month	JAN	FEB	MAR	APR	MAY	JUN	JUL	AUG	SEP	OCT	NOV	DEC	TOTAL
2005	28 163	18 514	34 855	34 698	44 918	71 916	85 922	82 042	71 466	47 194	24 218	27 022	570 928
2006	29 532	20 340	28 158	45 693	52 740	75 533	90 005	86 614	77 783	52 948	25 756	37 982	623 084
2007	32 739	24 716	35 286	48 077	54 318	80 826	88 927	89 513	84 625	57 164	32 701	41 591	670 483
Change 2007/2006													
Monthly	10,86%	21,51%	25,31%	5,22%	2,99%	7,01%	-1,20%	3,35%	8,80%	7,96%	26,96%	9,50%	
Cumulative	10,86%	15,20%	18,85%	13,82%	10,58%	9,51%	6,69%	6,02%	6,44%	6,59%	7,48%	7,61%	
Y/Y change													
2006/2005	104,86%	109,86%	80,79%	131,69%	117,41%	105,03%	104,75%	105,57%	108,84%	112,19%	106,35%	140,56%	
2007/2006	110,86%	121,51%	125,31%	105,22%	102,99%	107,01%	98,80%	103,35%	108,80%	107,96%	126,96%	109,50%	

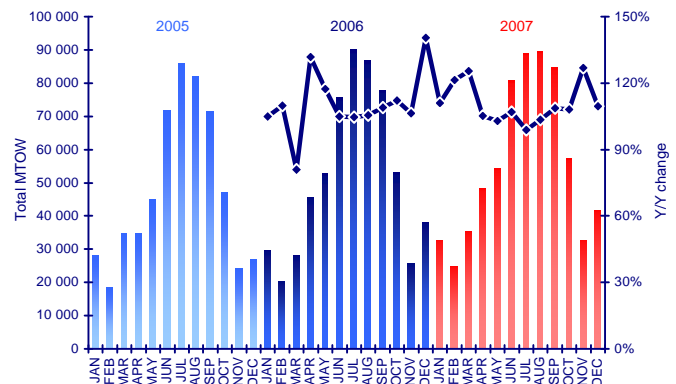
MTOW per month - Charter Carriers



Change 2007/2006 - Charter Carriers MTOW



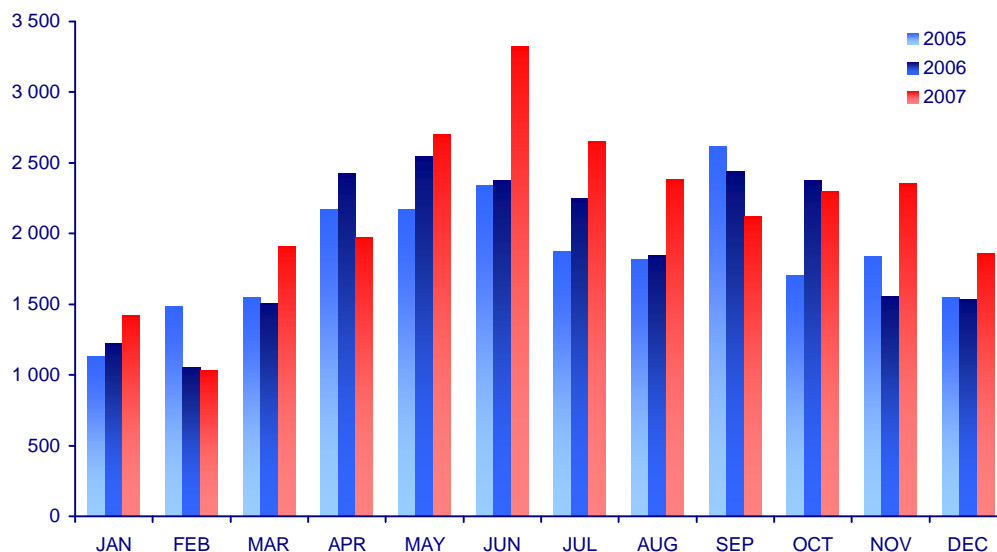
Y/Y Change - Charter Carriers MTOW



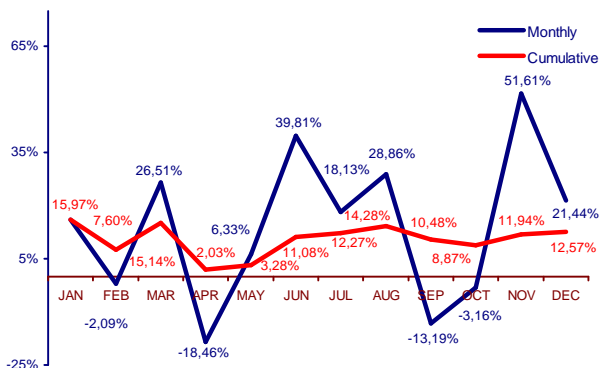
MTOW per month - General aviation

Month	JAN	FEB	MAR	APR	MAY	JUN	JUL	AUG	SEP	OCT	NOV	DEC	TOTAL
2005	1 129	1 484	1 547	2 169	2 169	2 340	1 872	1 817	2 613	1 709	1 837	1 548	22 234
2006	1 221	1 055	1 509	2 422	2 543	2 376	2 245	1 847	2 441	2 373	1 554	1 530	23 116
2007	1 416	1 033	1 909	1 975	2 704	3 322	2 652	2 380	2 119	2 298	2 356	1 858	26 022
Change 2007/2006													
Monthly	15,97%	-2,09%	26,51%	-18,46%	6,33%	39,81%	18,13%	28,86%	-13,19%	-3,16%	51,61%	21,44%	
Cumulative	15,97%	7,60%	15,14%	2,03%	3,28%	11,08%	12,27%	14,28%	10,48%	8,87%	11,94%	12,57%	
Y/Y change													
2006/2005	108,15%	71,09%	97,54%	111,66%	117,24%	101,54%	119,93%	101,65%	93,42%	138,85%	84,59%	98,84%	
2007/2006	115,97%	97,91%	126,51%	81,54%	106,33%	139,81%	118,13%	128,86%	86,81%	96,84%	151,61%	121,44%	

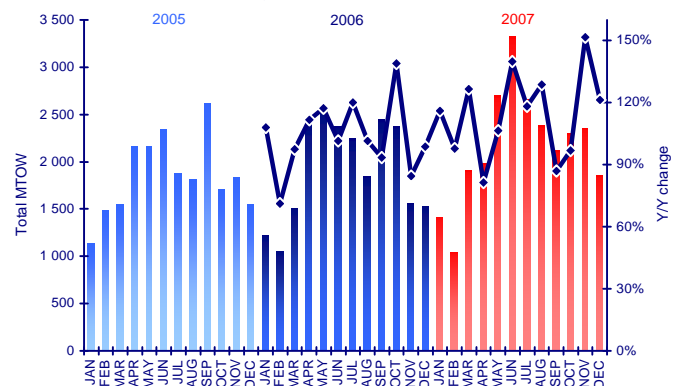
MTOW per month - General Aviation



Change 2007/2006 - General Aviation MTOW



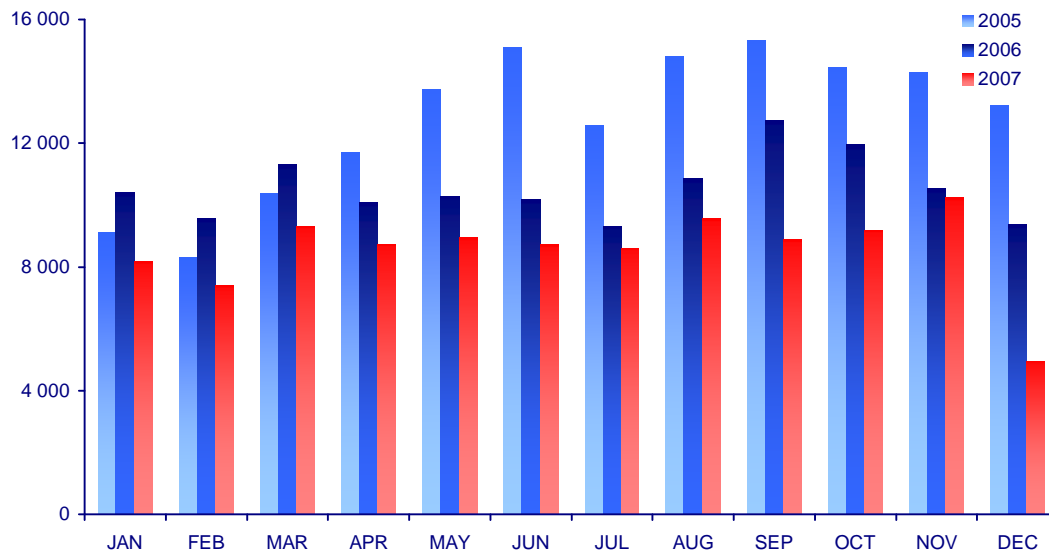
Y/Y Change - General Aviation MTOW



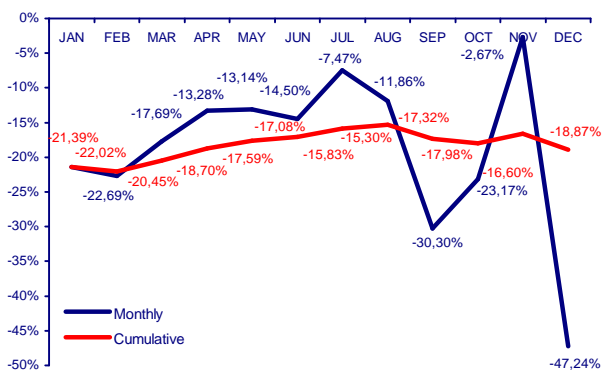
MTOW per month - Cargo

Month	JAN	FEB	MAR	APR	MAY	JUN	JUL	AUG	SEP	OCT	NOV	DEC	TOTAL
2005	9 135	8 295	10 360	11 725	13 720	15 085	12 565	14 805	15 330	14 455	14 280	13 230	152 985
2006	10 395	9 555	11 305	10 080	10 290	10 185	9 310	10 850	12 740	11 970	10 535	9 380	126 595
2007	8 171	7 387	9 305	8 741	8 938	8 708	8 615	9 563	8 880	9 196	10 254	4 949	102 707
Change 2007/2006													
Monthly	-21,39%	-22,69%	-17,69%	-13,28%	-13,14%	-14,50%	-7,47%	-11,86%	-30,30%	-23,17%	-2,67%	-47,24%	
Cumulative	-21,39%	-22,02%	-20,45%	-18,70%	-17,59%	-17,08%	-15,83%	-15,30%	-17,32%	-17,98%	-16,60%	-18,87%	
Y/Y change													
2006/2005	113,79%	115,19%	109,12%	85,97%	75,00%	67,52%	74,09%	73,29%	83,11%	82,81%	73,77%	70,90%	
2007/2006	78,61%	77,31%	82,31%	86,72%	86,86%	85,50%	92,53%	88,14%	69,70%	76,83%	97,33%	52,76%	

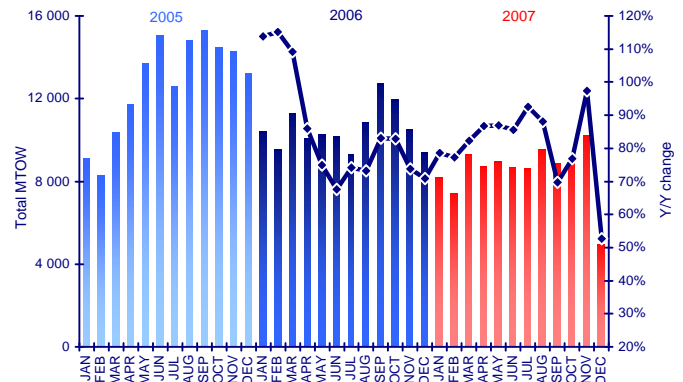
MTOW per month - Cargo



Change 2007/2006 - Cargo MTOW



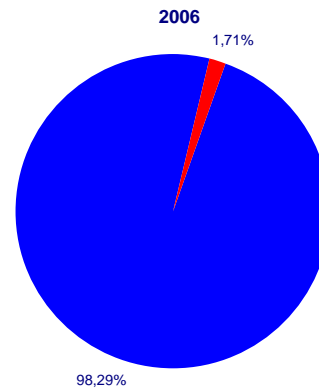
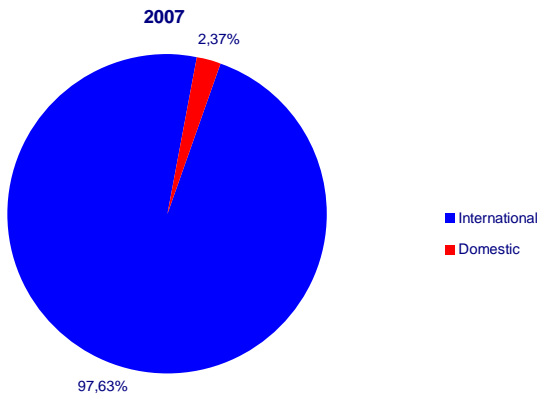
Y/Y Change - Cargo MTOW



MTOW per area in 2007 (tonnes)

Month	JAN	FEB	MAR	APR	MAY	JUN	JUL	AUG	SEP	OCT	NOV	DEC	TOTAL
MTOW total	297 171	279 128	339 079	363 875	390 156	414 694	429 009	428 390	412 629	393 239	356 685	357 832	4 461 887
International	292 135	273 904	333 006	358 245	384 271	408 891	423 191	423 036	407 225	387 049	350 887	314 383	4 356 223
Domestic	5 036	5 224	6 073	5 630	5 885	5 803	5 818	5 354	5 404	6 190	5 798	43 449	105 664

	2006	2007	Change 07/06	Market Share
MTOW total	4 129 256	4 461 887	8,06%	100,00%
International	4 058 590	4 356 223	7,33%	97,63%
Domestic	70 666	105 664	49,53%	2,37%



CARGO

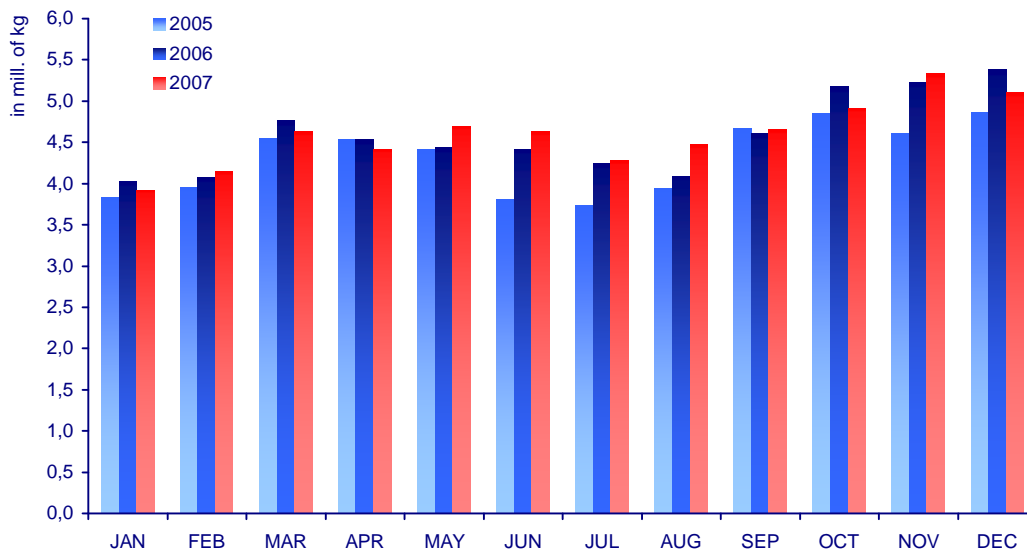
Air Cargo per month in kg

Month	JAN	FEB	MAR	APR	MAY	JUN	JUL	AUG	SEP	OCT	NOV	DEC	TOTAL
2005	3 829 417	3 954 427	4 541 837	4 532 936	4 409 609	3 812 497	3 732 582	3 932 503	4 667 071	4 847 383	4 613 508	4 856 680	51 730 450
2006	4 017 529	4 075 486	4 766 945	4 529 941	4 436 511	4 415 340	4 247 186	4 094 304	4 599 983	5 177 466	5 232 862	5 379 346	54 972 899
2007	3 922 404	4 141 053	4 624 517	4 416 300	4 694 892	4 624 510	4 273 952	4 470 878	4 659 130	4 916 105	5 333 773	5 102 040	55 179 554
Change 2007/2006													
Monthly	-2,37%	1,61%	-2,99%	-2,51%	5,82%	4,74%	0,63%	9,20%	1,29%	-5,05%	1,93%	-5,16%	
Cummulative	-2,37%	-0,37%	-1,34%	-1,64%	-0,12%	0,69%	0,68%	1,69%	1,64%	0,86%	0,98%	0,38%	
YY change													
2006/2005	104,91%	103,06%	104,96%	99,93%	100,61%	115,81%	113,79%	104,11%	98,56%	106,81%	113,42%	110,76%	
2007/2006	97,63%	101,61%	97,01%	97,49%	105,82%	104,74%	100,63%	109,20%	101,29%	94,95%	101,93%	94,84%	

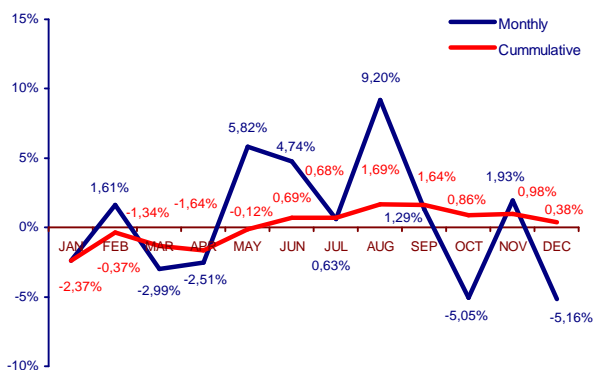
Total Cargo (incl. Route Feeder Service)

Month	JAN	FEB	MAR	APR	MAY	JUN	JUL	AUG	SEP	OCT	NOV	DEC	TOTAL
2007	5 321 491	5 821 533	6 377 598	5 940 595	6 166 564	6 166 597	5 915 652	5 977 851	6 380 391	6 868 629	7 289 401	6 424 515	74 650 815

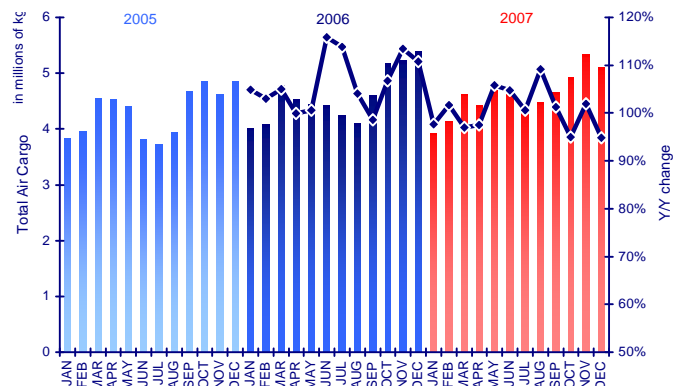
Air Cargo per month - Total



Change 2007/2006 - Total Air Cargo



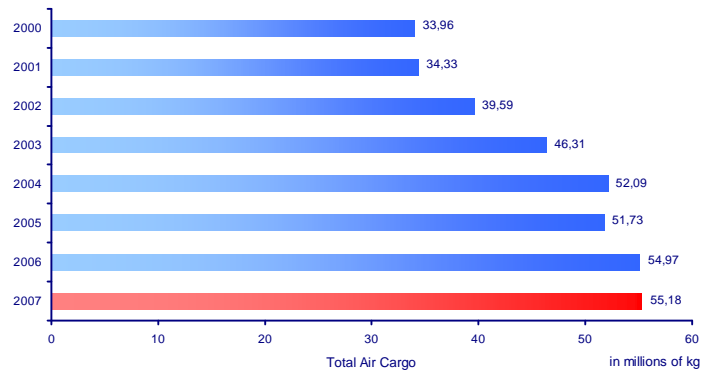
YY Change - Total Air Cargo



Air Cargo Development 2000 - 2007

2000	33 964 950
2001	34 331 294
2002	39 589 390
2003	46 309 833
2004	52 085 989
2005	51 730 450
2006	54 972 899
2007	55 179 554

Air Cargo Development 2000-2007

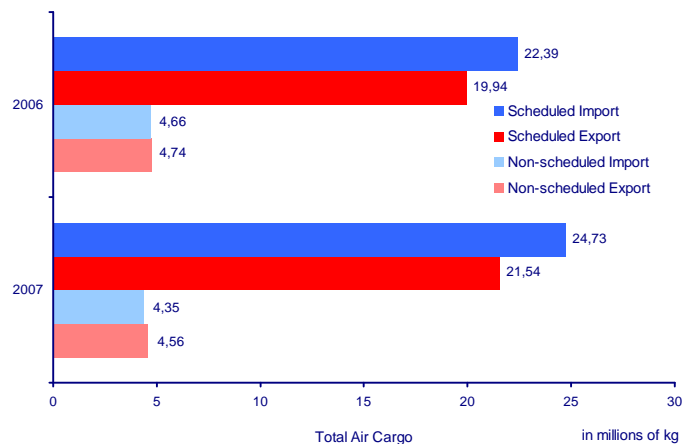
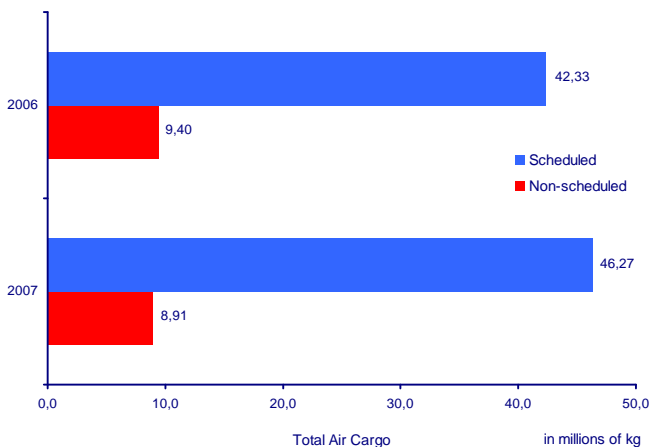


Cargo per traffic type (kg)

Month	JAN	FEB	MAR	APR	MAY	JUN	JUL	AUG	SEP	OCT	NOV	DEC	TOTAL
Air cargo	3 922 404	4 141 053	4 624 517	4 416 300	4 694 892	4 624 510	4 273 952	4 470 878	4 659 130	4 916 105	5 333 773	5 102 040	55 179 554
Scheduled	3 356 847	3 501 385	3 954 994	3 784 114	4 040 979	3 887 088	3 666 419	3 679 171	4 037 060	4 142 479	4 203 990	4 017 151	46 271 677
Import	1 842 974	1 823 749	2 106 367	2 056 525	2 164 358	1 972 076	1 942 763	1 980 701	2 162 548	2 194 018	2 333 482	2 149 678	24 729 239
Export	1 513 873	1 677 636	1 848 627	1 727 589	1 876 621	1 915 012	1 723 656	1 698 470	1 874 512	1 948 461	1 870 508	1 867 473	21 542 438
Non-scheduled	565 557	639 668	669 523	632 186	653 913	737 422	607 533	791 707	622 070	773 626	1 129 783	1 084 889	8 907 877
Import	295 716	319 624	329 473	338 024	339 427	393 033	291 438	344 553	306 563	359 972	504 922	528 348	4 351 093
Export	269 841	320 044	340 050	294 162	314 486	344 389	316 095	447 154	315 507	413 654	624 861	556 541	4 556 784

	2006	2007	Change 07/06	Market Share
Air cargo	54 972 899	55 179 554	0,38%	100,00%
Scheduled	47 653 167	46 271 677	-2,90%	83,86%
Import	25 513 765	24 729 239	-3,07%	44,82%
Export	22 139 402	21 542 438	-2,70%	39,04%
Non-scheduled	7 319 732	8 907 877	21,70%	16,14%
Import	3 536 120	4 351 093	23,05%	7,89%
Export	3 783 612	4 556 784	20,43%	8,26%

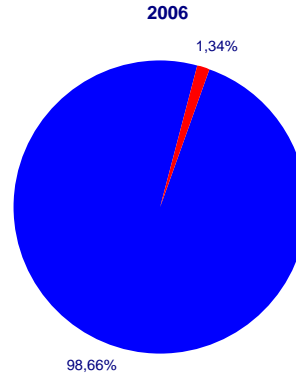
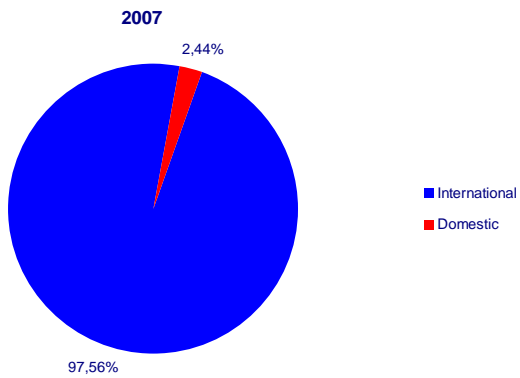
Trend 2006-2007



Air cargo per area (kg)

Month	JAN	FEB	MAR	APR	MAY	JUN	JUL	AUG	SEP	OCT	NOV	DEC	TOTAL
Air cargo total	3 922 404	4 141 053	4 624 517	4 416 300	4 694 892	4 624 510	4 273 952	4 470 878	4 659 130	4 916 105	5 333 773	5 102 040	55 179 554
International	3 830 594	4 030 173	4 525 487	4 301 745	4 584 158	4 492 201	4 166 658	4 365 484	4 577 411	4 775 057	5 187 664	4 994 708	53 831 340
Domestic	91 810	110 880	99 030	114 555	110 734	132 309	107 294	105 394	81 719	141 048	146 109	107 332	1 348 214

	2006	2007	Change 07/06	Market Share
Total cargo	54 972 899	55 179 554	0,38%	100,00%
International	54 235 126	53 831 340	-0,74%	97,56%
Domestic	737 773	1 348 214	82,74%	2,44%



DESTINATIONS

DESTINATIONS - Scheduled Traffic

Number of destinations

Season	Summer 2006	Summer 2007	Winter 2006	Winter 2007
Total destinations	114	119	107	106

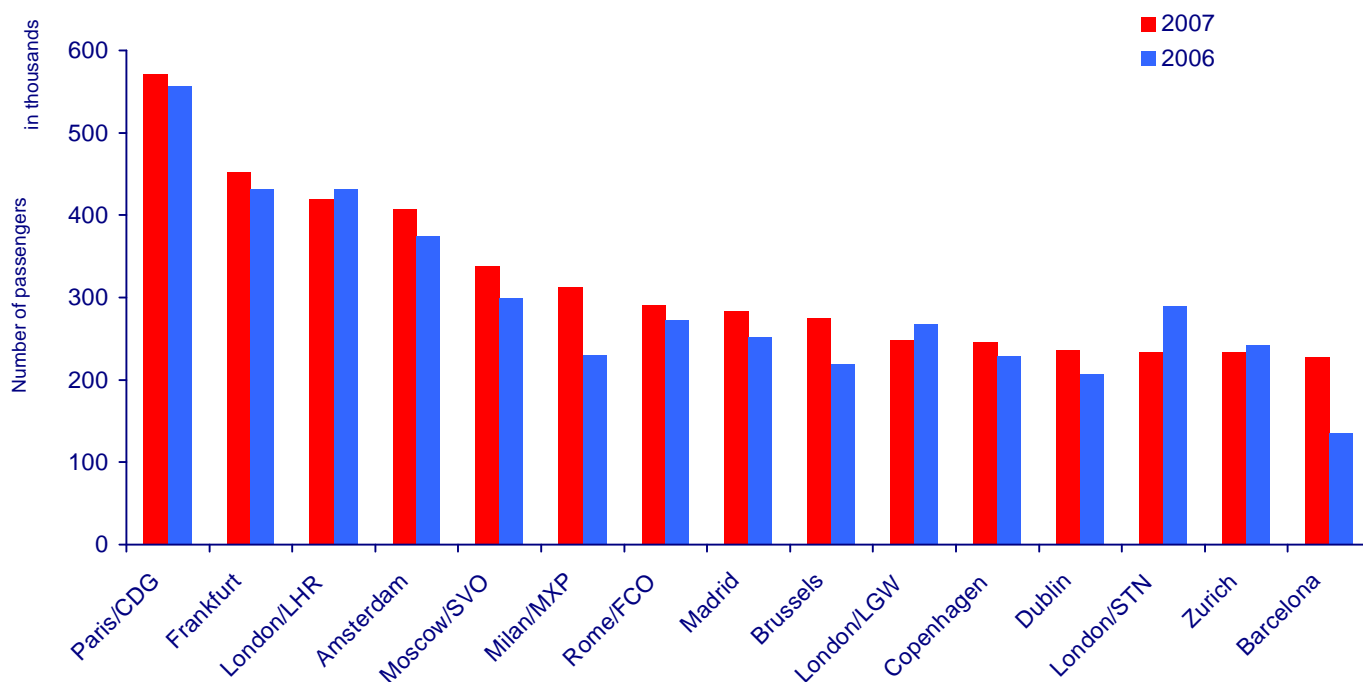
New destinations in 2007

Atlanta
 Blackpool
 Bournemouth
 Burgas
 Catania
 Florence
 Kaliningrad
 London/Luton
 Malaga
 Rimini
 Stavanger
 Turin
 Venice/Treviso
 Verona
 Voronezh

TOP 15 Destinations (Total by PAX)

	2007	2006	Y/Y Change
Paris/CDG	571 041	556 210	2,67%
Frankfurt	452 501	431 130	4,96%
London/LHR	418 904	431 261	-2,87%
Amsterdam	407 010	374 904	8,56%
Moscow/SVO	337 856	299 441	12,83%
Milan/MXP	312 384	229 863	35,90%
Rome/FCO	290 723	272 836	6,56%
Madrid	283 403	251 998	12,46%
Brussels	274 596	218 976	25,40%
London/LGW	247 609	267 160	-7,32%
Copenhagen	245 649	229 413	7,08%
Dublin	235 212	206 653	13,82%
London/STN	234 150	290 025	-19,27%
Zurich	233 378	242 008	-3,57%
Barcelona	226 655	134 983	67,91%

TOP 15 Destinations (Total by PAX)



TOP 15 Destinations per traffic type by PAX

	2007	2006	Y/Y Change
Full service carriers			
Paris/CDG	495 481	469 084	5,63%
Frankfurt	452 144	430 851	4,94%
London/LHR	418 330	431 126	-2,97%
Amsterdam	327 078	315 178	3,78%
Moscow/SVO	326 354	287 753	13,41%
Brussels	244 458	217 083	12,61%
Madrid	237 760	189 075	25,75%
Zurich	232 570	241 580	-3,73%
Milan/MXP	221 675	219 998	0,76%
Dublin	215 593	203 858	5,76%
Rome/FCO	182 677	179 195	1,94%
Copenhagen	174 164	177 888	-2,09%
Budapest	173 924	156 926	10,83%
Vienna	155 003	153 662	0,87%
Munich	149 812	161 175	-7,05%
Low cost carriers			
London/STN	194 633	204 208	-4,69%
London/LGW	193 976	192 587	0,72%
Nottingham/EMA	166 954	161 612	3,31%
Barcelona	141 910	52 878	168,37%
Manchester	126 319	89 869	40,56%
Bristol	98 685	93 238	5,84%
Geneva	94 857	36 478	160,04%
Newcastle	90 356	86 622	4,31%
Milan/MXP	87 618	3 775	2221,01%
Dortmund	81 745	81 636	0,13%
Cologne	79 330	76 911	3,15%
Birmingham	79 032	85 802	-7,89%
Milan/BGY	72 430	66 388	9,10%
Leeds	71 370	83 086	-14,10%
Oslo	71 363	58 832	21,30%
Charter carriers			
Hurghada	219 124	176 437	24,19%
Antalya	120 085	75 220	59,65%
Monastir	103 536	95 733	8,15%
Djerba	87 629	78 929	11,02%
Burgas	82 074	84 788	-3,20%
Sharm El Sheikh	76 350	55 208	38,30%
Heraklion	68 338	90 175	-24,22%
Tel Aviv	64 671	67 025	-3,51%
Rhodes	57 951	53 770	7,78%
Thessaloniki	51 390	49 603	3,60%
Las Palmas	42 782	22 987	86,11%
Palma Mallorca	41 049	35 081	17,01%
Zakynthos	38 772	32 527	19,20%
Tenerife	33 122	19 168	72,80%
Taba	32 100	17 342	85,10%

TOP 15 Destinations (Total by MVT)

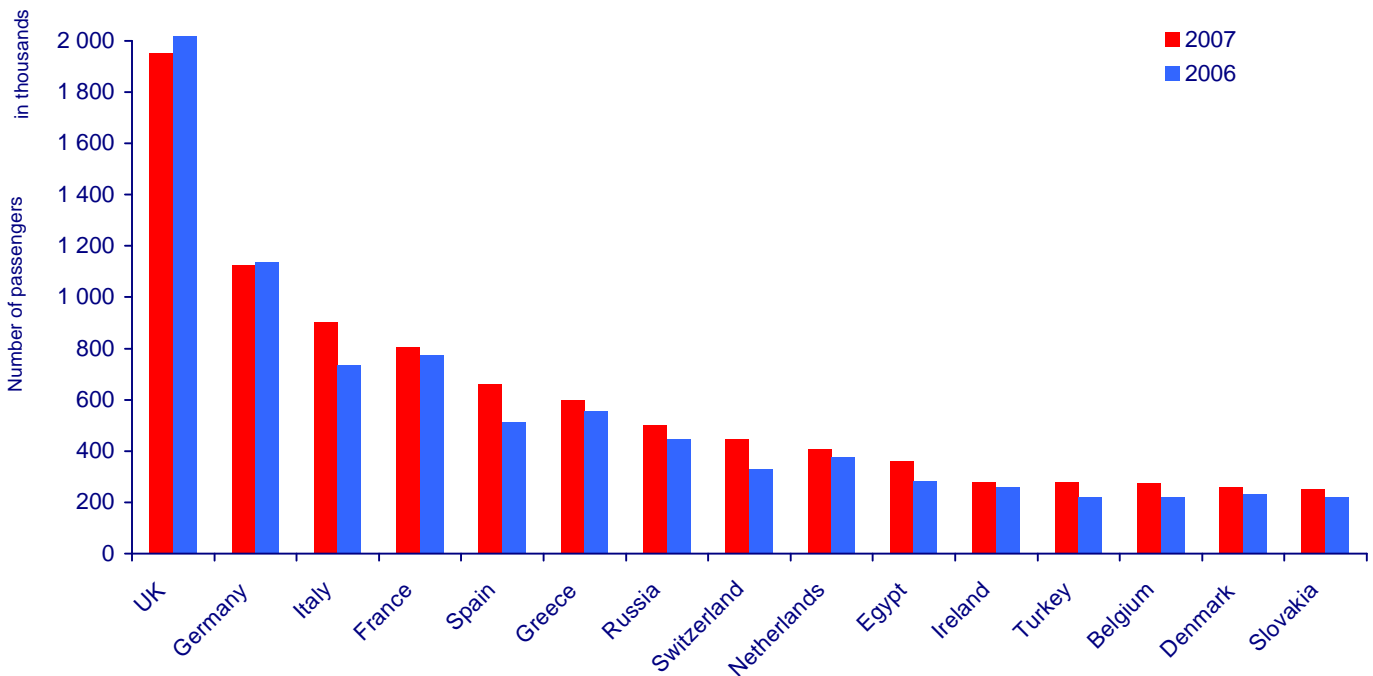
	2007	2006	Y/Y Change
Paris/CDG	6 090	6 256	-2,65%
Vienna	5 016	4 889	2,60%
Frankfurt	4 924	4 943	-0,38%
Amsterdam	4 764	4 427	7,61%
Munich	4 751	4 807	-1,16%
Brussels	4 448	3 447	29,04%
London/LHR	4 214	4 215	-0,02%
Budapest	4 091	3 844	6,43%
Zurich	3 860	3 915	-1,40%
Bratislava	3 609	3 313	8,93%
Milan/MXP	3 593	2 882	24,67%
Ostrava	3 547	3 924	-9,61%
Copenhagen	3 407	3 455	-1,39%
Moscow/SVO	3 382	2 888	17,11%
Warsaw	3 274	3 344	-2,09%

COUNTRIES

TOP 15 Countries (Total by PAX)

	2007	2006	Y/Y Change
UK	1 950 029	2 040 427	-4,43%
Germany	1 127 128	1 136 874	-0,86%
Italy	904 981	733 544	23,37%
France	805 396	773 617	4,11%
Spain	662 875	513 156	29,18%
Greece	597 116	556 407	7,32%
Russia	503 116	447 920	12,32%
Switzerland	446 919	330 789	35,11%
Netherlands	407 636	375 081	8,68%
Egypt	361 688	282 755	27,92%
Ireland	280 523	258 291	8,61%
Turkey	276 093	219 091	26,02%
Belgium	274 789	219 359	25,27%
Denmark	256 147	231 877	10,47%
Slovakia	253 205	219 198	15,51%

TOP 15 Countries (Total by PAX)



TOP 15 Countries per traffic type by PAX

	2007	2006	Y/Y Change
Full service carriers			
Germany	939 248	911 551	3,04%
UK	599 984	771 183	-22,20%
France	598 861	577 616	3,68%
Italy	506 120	458 050	10,49%
Russia	477 421	422 572	12,98%
Netherlands	327 078	315 178	3,78%
Spain	308 859	255 743	20,77%
Switzerland	301 610	243 600	23,81%
Ireland	260 754	254 795	2,34%
Belgium	244 458	217 083	12,61%
Slovakia	222 644	216 945	2,63%
Ukraine	195 228	148 164	31,76%
Denmark	174 241	179 894	-3,14%
Hungary	173 924	156 926	10,83%
Poland	155 023	140 686	10,19%
Low cost carriers			
UK	1 343 225	1 261 609	6,47%
Italy	322 708	180 319	78,97%
France	187 390	156 200	19,97%
Spain	179 895	86 250	108,57%
Germany	161 075	194 197	-17,06%
Switzerland	141 569	85 502	65,57%
Norway	133 290	103 871	28,32%
Netherlands	70 294	58 263	20,65%
Denmark	65 241	50 650	28,81%
Greece	57 139	10 060	467,98%
Belgium	29 542	1 807	1534,86%
Slovakia	27 397	135	20194,07%
Sweden	24 639	58 257	-57,71%
Ireland	15 675	181	8560,22%
Croatia	14 992	12 997	15,35%
Charter carriers			
Greece	397 543	393 967	0,91%
Egypt	328 738	249 426	31,80%
Tunisia	215 204	207 077	3,92%
Spain	174 044	170 951	1,81%
Turkey	167 015	126 577	31,95%
Bulgaria	99 297	104 256	-4,76%
Italy	75 831	94 812	-20,02%
Israel	64 671	67 033	-3,52%
Canary Islands	63 970	60 153	6,35%
Germany	25 731	29 601	-13,07%
Russia	25 380	24 944	1,75%
Cyprus	19 390	15 481	25,25%
France	18 636	39 354	-52,65%
Hungary	17 363	6 847	153,59%
Denmark	16 611	1 270	1207,95%

TOP 15 Countries (Total by MVT)

	2007	2006	Y/Y Change
Germany	24 865	25 171	-1,22%
UK	18 831	19 910	-5,42%
Italy	11 758	9 654	21,79%
France	9 890	9 892	-0,02%
Czech Republic	8 459	9 274	-8,79%
Slovakia	7 793	6 741	15,61%
Switzerland	7 121	5 571	27,82%
Spain	6 065	4 759	27,44%
Russia	5 815	4 846	20,00%
Austria	5 387	5 304	1,56%
Greece	5 385	4 861	10,78%
Belgium	5 057	4 058	24,62%
Poland	4 922	4 780	2,97%
Netherlands	4 866	4 509	7,92%
Hungary	4 125	3 856	6,98%

AIRLINES

Number of airlines

Season	Summer 2006	Summer 2007	Winter 2006	Winter 2007
Total airlines	55	58	54	53
Passenger	48	52	48	47
Cargo	7	6	6	6

New airlines at Prague Airport in 2007

ALPI Eagles
 Air Italy
 Belavia
 Cimber Air
 Clickair
 Delta Air Lines
 Iberia
 KD Avia Airlines
 Meridiana
 Ryanair
 Emirates SkyCargo*

* cargo airlines

TOP 15 Carriers in 2007 – Total by PAX

Airline

Czech Airlines
 Travel Service
 easyJet
 SkyEurope Airlines
 Lufthansa
 British Airways
 Air France
 bmibaby
 Alitalia
 Jet2
 SWISS
 Aeroflot
 Thomsonfly.com
 Aer Lingus
 Brussels Airlines

TOP 15 Carriers in 2006 – Total by MVT

Airline

Czech Airlines
 Lufthansa
 Travel Service
 easyJet Airline
 SkyEurope Airlines
 Air France
 SWISS
 Austrian Airlines
 Alitalia
 British Airways
 Jet2
 bmibaby
 Brussels Airlines
 Aeroflot
 KLM Royal Dutch Airlines

		Based			Others			Share	
		2006	2007	Change	2006	2007	Change	2006	2007
PAX	TOTAL	6 614 561	7 022 816	6,17%	4 958 492	5 455 168	10,02%	57:43	56:44
	FSC	4 699 909	4 719 648	0,42%	2 825 528	3 071 761	8,71%	62:38	61:39
	LCC	543 261	798 942	47,06%	1 762 816	2 008 501	13,94%	24:76	28:72
	Charter	1 371 391	1 504 226	9,69%	362 462	367 454	1,38%	79:21	80:20
MVT	TOTAL	88 407	92 726	4,89%	74 583	78 645	5,45%	54:46	54:46
	FSC	71 608	72 474	1,21%	41 350	43 354	4,85%	63:37	63:37
	LCC	5 496	7 557	37,50%	16 124	17 508	8,58%	25:75	30:70
	Charter	11 303	12 695	12,32%	10 435	11 166	7,01%	52:48	53:47
MTOW	TOTAL	2 331 653	2 502 699	7,34%	1 798 387	1 954 012	8,65%	56:44	56:44
	FSC	1 752 393	1 813 675	3,50%	1 067 053	1 169 293	9,58%	62:38	61:39
	LCC	176 467	242 072	37,18%	486 604	537 840	10,53%	27:73	31:69
	Charter	402 793	446 952	10,96%	221 404	220 916	-0,22%	65:35	67:33

Market Share of Airline Alliances in 2007 by PAX

Alliance	No. of PAX	Share in %
SkyTeam	6 148 923	49,44%
Star Alliance	1 076 303	8,65%
oneworld	441 111	3,55%
other airlines	4 769 917	38,35%
TOTAL PAX	12 436 254	100,00%

Alliances and other PAX split in 2007

