

Equivalent Continuous Sound Pressure Level

MP01 Jeneč

May 2019

	Total Sound [dB]		Aircraft Sound [dB]		Ambient Sound [dB]	
	L _{Aeq,T} DAY	L _{Aeq,T} NIGHT	L _{Aeq,T} DAY	L _{Aeq,T} NIGHT	L _{Aeq,T} DAY	L _{Aeq,T} NIGHT
01/05/2019	60.4	54.2	59.9	53.5	51.0	46.3
02/05/2019	60.6	55.1	59.8**	54.4	52.7	46.7
03/05/2019	61.4	54.0	60.9	53.0	51.9	47.1
04/05/2019	59.6	52.5	57.4	51.3	55.5	46.4
05/05/2019	55.1	53.5	52.2**	52.2	51.9	47.5
06/05/2019	60.9	53.2	59.3	51.8	55.7	47.7
07/05/2019	60.4	53.2	59.6	52.2	52.4	46.3
08/05/2019	58.1	52.3	56.7**	51.5	52.5	44.5
09/05/2019	60.6	54.9	57.4	53.4	57.7	49.6
10/05/2019	57.7	54.5	52.9	50.6	55.9	52.2
11/05/2019	61.6	52.7	58.1**	51.4	59.0	46.8
12/05/2019	55.8	56.4	51.0	55.7	54.1	47.7
13/05/2019	56.1	56.0	51.8	54.2	54.1	51.3
14/05/2019	55.1	50.7	46.4	47.8	54.5	47.7
15/05/2019	56.2	53.0	45.4**	46.5	55.8	51.9
16/05/2019	61.1	55.2	60.3	54.5	53.7	46.9
17/05/2019	57.4	51.6	55.7	48.2	52.5	49.0
18/05/2019	53.3	48.8	42.3	44.5	52.9	46.8
19/05/2019	51.9	47.7	41.1	41.1	51.6	46.7
20/05/2019	57.5	50.0	44.3	44.5	57.3	48.6
21/05/2019	58.2	53.4	54.1	52.3	56.1	47.0
22/05/2019	57.6	55.7	55.4**	54.6	53.7	49.1
23/05/2019	55.7	55.1	52.2	53.7	53.1	49.5
24/05/2019	59.8	53.2	57.3	50.2	56.3	50.2
25/05/2019	61.2	53.4	59.7	51.6	55.8	48.6
26/05/2019	61.2	55.7	59.8	55.1	55.8	47.0
27/05/2019	60.5	55.6	59.6	54.9	53.4	47.2
28/05/2019	59.7	54.8	58.5	53.9	53.2	47.2
29/05/2019	55.3	54.5	51.8	52.9	52.8	49.5
30/05/2019	60.8	54.7	59.6	53.4	54.6	48.8
31/05/2019	61.1	54.9	59.8	53.3	55.3	50.0
Sum	59.1	54.0	57.2	52.5	54.7	48.5

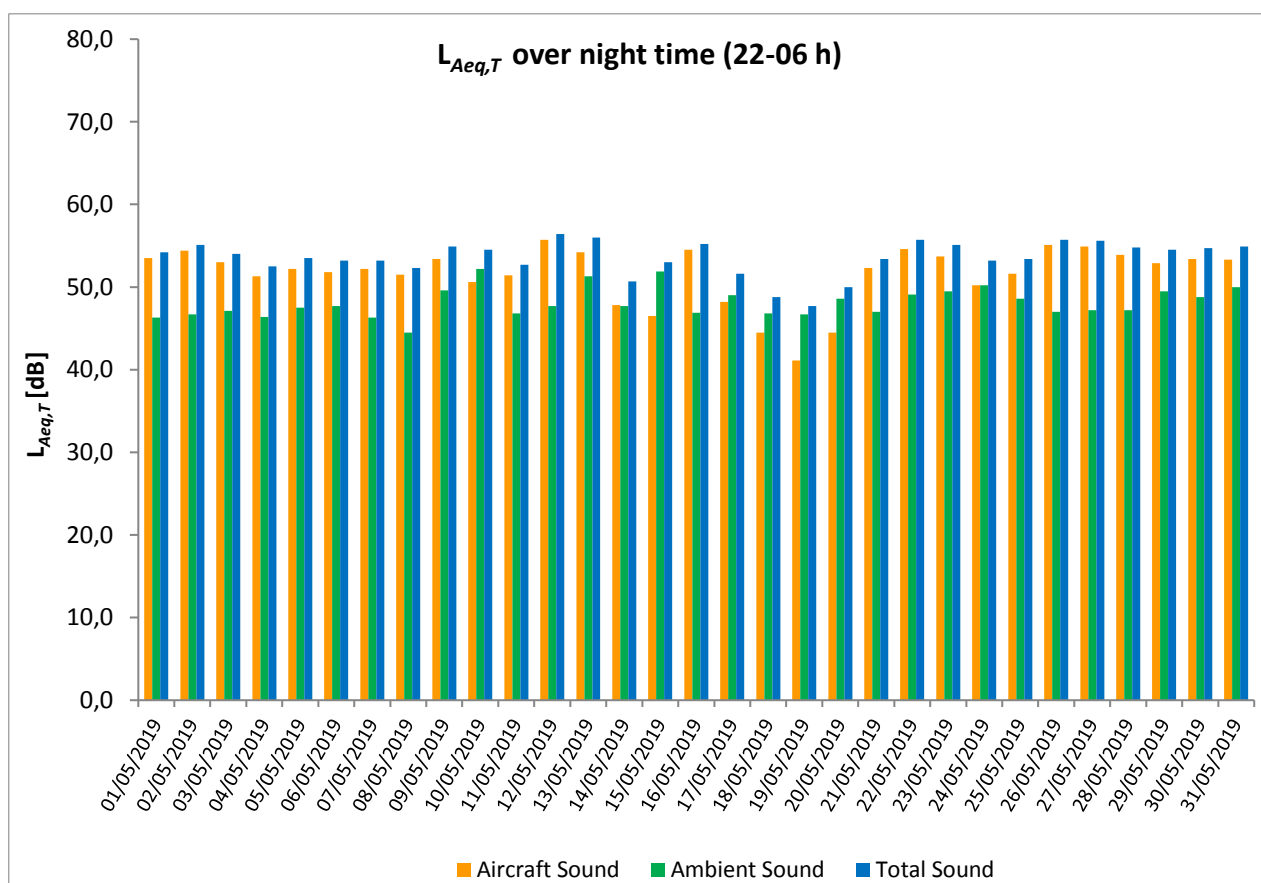
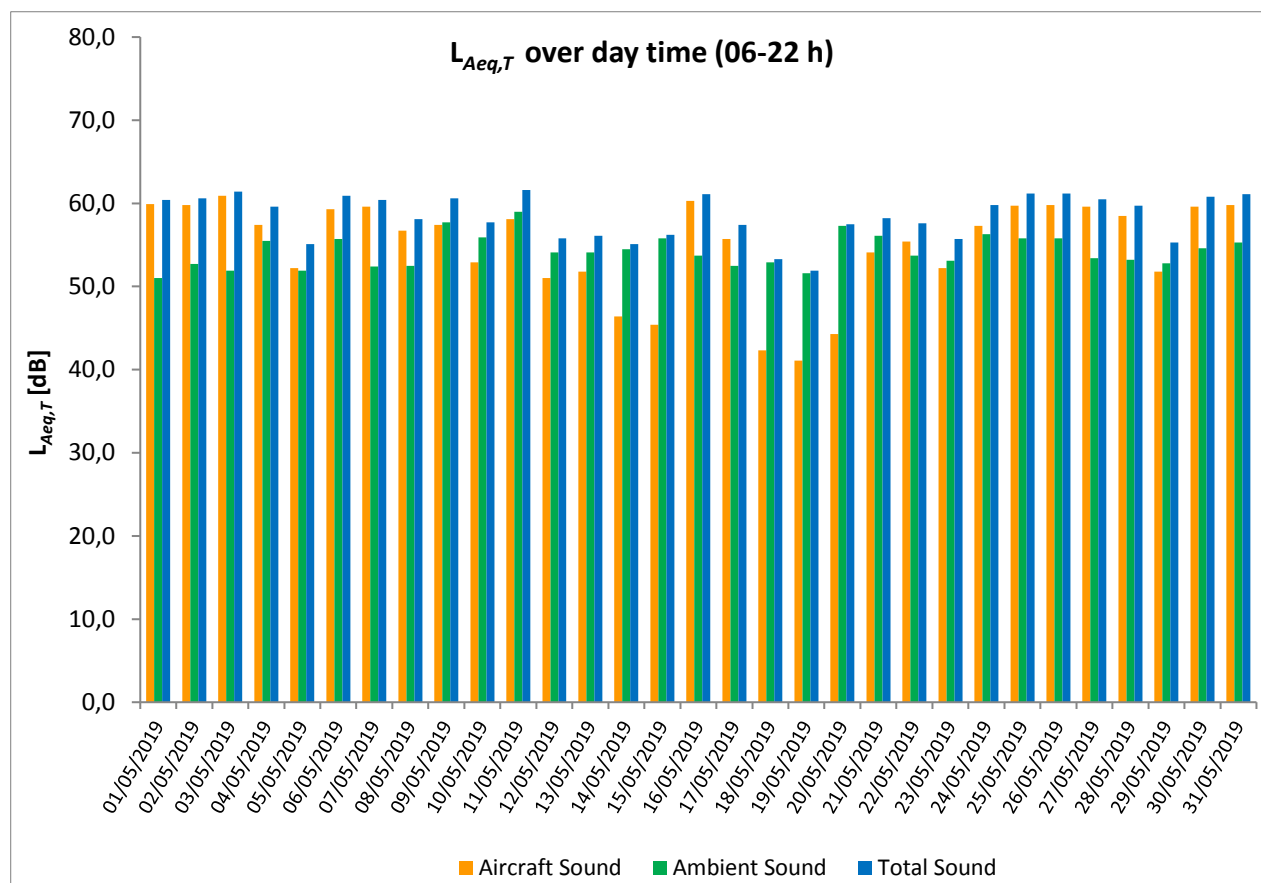
* Availability < 50%

** One or more events measured at wind speed above 5 m/s, not included into calculation

Equivalent Continuous Sound Pressure Level

MP01 Jeneč

May 2019



Equivalent Continuous Sound Pressure Level

MP02 Červený Újezd

May 2019

	Total Sound [dB]		Aircraft Sound [dB]		Ambient Sound [dB]	
	L _{Aeq,T} DAY	L _{Aeq,T} NIGHT	L _{Aeq,T} DAY	L _{Aeq,T} NIGHT	L _{Aeq,T} DAY	L _{Aeq,T} NIGHT
01/05/2019	55.9	50.6	54.9	49.2	48.6	44.9
02/05/2019	55.8	50.1	54.6	49.5	49.5	41.5
03/05/2019	56.6	49.3	56.0	48.8	47.8	39.3
04/05/2019	54.6	47.9	53.3	47.4	48.6	38.4
05/05/2019	51.9	48.6	48.5**	47.3	49.2	42.4
06/05/2019	56.5	49.2	55.1	48.0	50.7	42.9
07/05/2019	56.2	49.6	54.7	48.2	50.9	44.1
08/05/2019	54.6	49.3	51.8	46.8	51.3	45.8
09/05/2019	56.9	50.3	55.2	49.2	52.0	43.4
10/05/2019	54.5	49.9	50.5	48.9	52.2	42.7
11/05/2019	57.4	48.4	53.8	46.8	54.8	43.0
12/05/2019	51.6	51.1	45.2	50.2	50.5	43.8
13/05/2019	53.0	50.9	47.9	50.2	51.4	42.8
14/05/2019	51.6	46.2	41.8**	43.7	51.1	42.7
15/05/2019	51.5	47.0	41.8	44.5	51.0	43.4
16/05/2019	55.6	51.4	53.1	49.6	52.0	46.8
17/05/2019	54.0	49.0	50.7	45.5	51.3	46.4
18/05/2019	49.9	44.8	39.8	39.6	49.4	43.2
19/05/2019	48.4	44.0	39.9	40.7	47.7	41.2
20/05/2019	50.9	45.8	41.0	42.3	50.5	43.2
21/05/2019	53.1	47.6	49.6	46.1	50.5	42.4
22/05/2019	53.4	50.2	50.3	49.5	50.4	41.6
23/05/2019	51.7	49.9	46.7	48.8	50.0	43.4
24/05/2019	54.9	47.8	53.3	46.5	49.8	42.1
25/05/2019	55.6	48.5	54.7	47.7	48.4	40.5
26/05/2019	55.6	51.0	54.8	50.5	47.8	40.8
27/05/2019	55.7	50.9	54.7	49.7	48.6	44.7
28/05/2019	54.3	50.8	53.0	49.8	48.4	44.0
29/05/2019	50.9	49.6	45.9	48.8	49.2	41.9
30/05/2019	56.1	50.4	55.4	49.8	48.0	41.3
31/05/2019	56.3	49.6	55.4	49.0	49.1	41.2
Sum	54.6	49.4	52.5	48.2	50.3	43.2

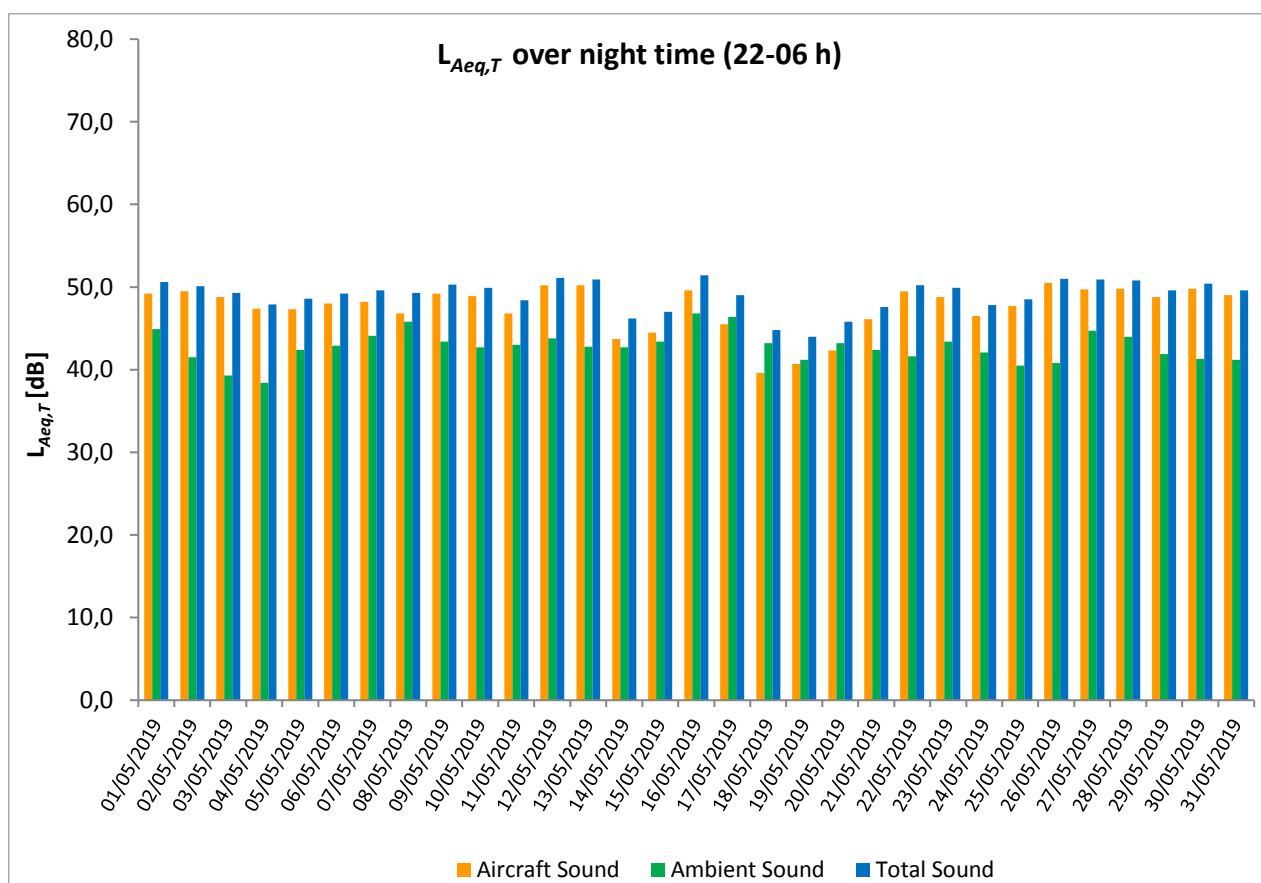
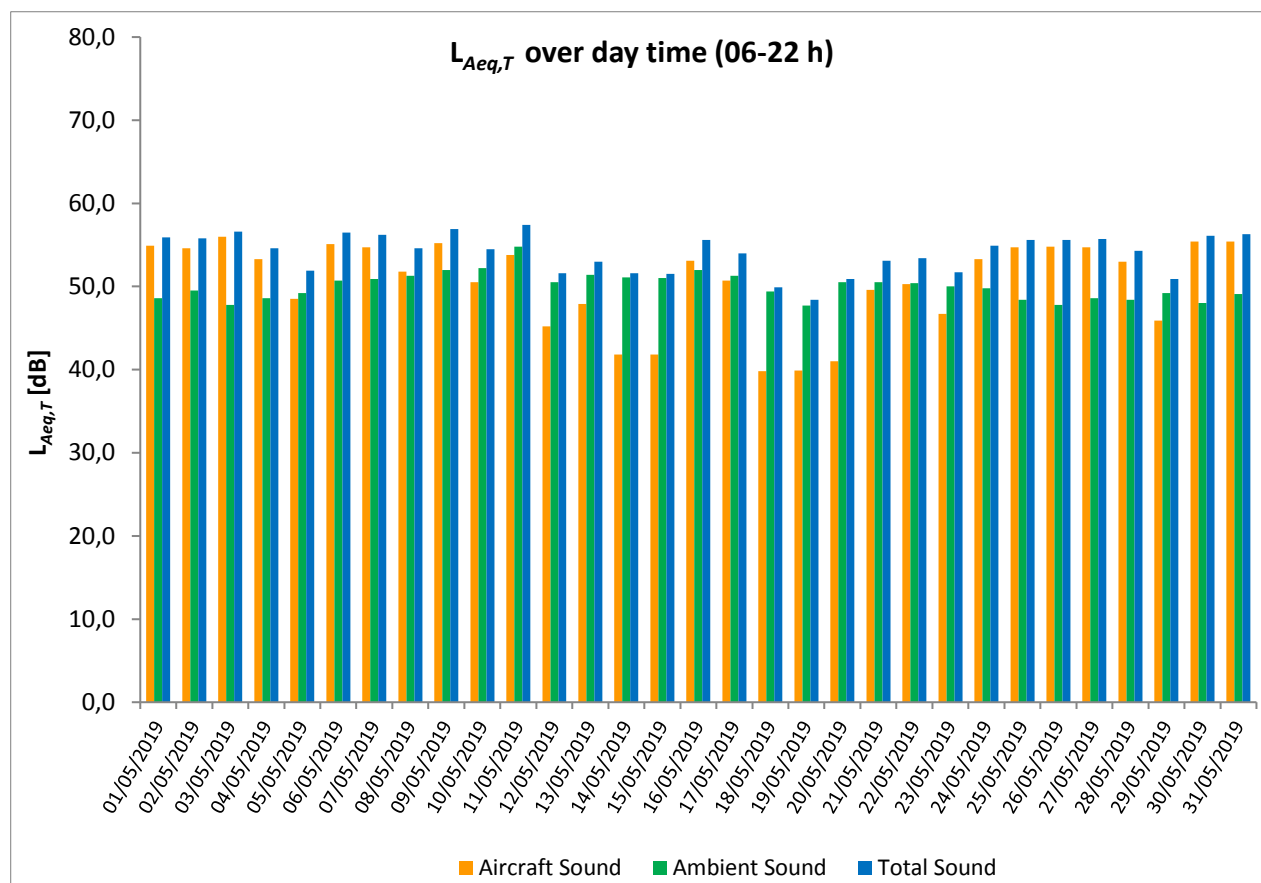
* Availability < 50%

** One or more events measured at wind speed above 5 m/s, not included into calculation

Equivalent Continuous Sound Pressure Level

MP02 Červený Újezd

May 2019



Equivalent Continuous Sound Pressure Level

MP03 Unhošť

May 2019

	Total Sound [dB]		Aircraft Sound [dB]		Ambient Sound [dB]	
	L _{Aeq,T} DAY	L _{Aeq,T} NIGHT	L _{Aeq,T} DAY	L _{Aeq,T} NIGHT	L _{Aeq,T} DAY	L _{Aeq,T} NIGHT
01/05/2019	56.9	49.2	54.7	48.6	52.9	40.7
02/05/2019	56.8	50.4	54.3	49.7	53.2	42.5
03/05/2019	57.8	49.5	55.9	48.6	53.3	42.4
04/05/2019	55.3	48.4	53.9	47.6	49.8	40.6
05/05/2019	53.2	49.6	51.0	48.9	49.1	41.7
06/05/2019	59.0	48.3	54.6	47.1	57.0	42.2
07/05/2019	56.3	49.1	54.8	48.1	50.9	42.2
08/05/2019	55.9	48.8	52.3	48.0	53.3	41.1
09/05/2019	56.3	50.5	54.9	49.6	50.6	43.4
10/05/2019	52.6	49.3	50.4	48.3	48.6	42.3
11/05/2019	57.2	48.2	53.9	47.3	54.4	41.0
12/05/2019	51.3	51.7	45.0	51.0	50.2	43.3
13/05/2019	53.2	51.0	48.0	50.3	51.7	42.8
14/05/2019	57.5	46.2	46.5	44.2	57.1	41.8
15/05/2019	51.2	47.1	46.1	45.3	49.6	42.3
16/05/2019	57.1	51.2	53.8	50.4	54.4	43.7
17/05/2019	59.0	48.7	53.4	46.8	57.6	44.2
18/05/2019	54.5	44.7	43.3	42.2	54.1	41.0
19/05/2019	51.4	46.5	43.3	44.1	50.7	42.7
20/05/2019	54.7	49.6	45.5	45.6	54.1	47.4
21/05/2019	53.9	48.7	49.9	45.7	51.8	45.7
22/05/2019	56.5	49.9	49.2	49.1	55.6	42.0
23/05/2019	52.1	49.9	48.4	49.1	49.7	42.3
24/05/2019	55.8	48.3	54.0	46.9	51.0	42.7
25/05/2019	57.2	49.2	54.7	48.3	53.7	41.7
26/05/2019	56.1	51.5	55.0	51.0	49.7	41.7
27/05/2019	56.2	51.3	55.1	50.3	49.6	44.5
28/05/2019	57.4	51.5	52.7	49.9	55.7	46.3
29/05/2019	56.9	50.2	52.0	49.4	55.2	42.4
30/05/2019	56.6	52.2	54.9	49.0	51.8	49.3
31/05/2019	57.1	50.0	55.3	48.9	52.4	43.5
Sum	56.1	49.7	52.8	48.5	53.3	43.5

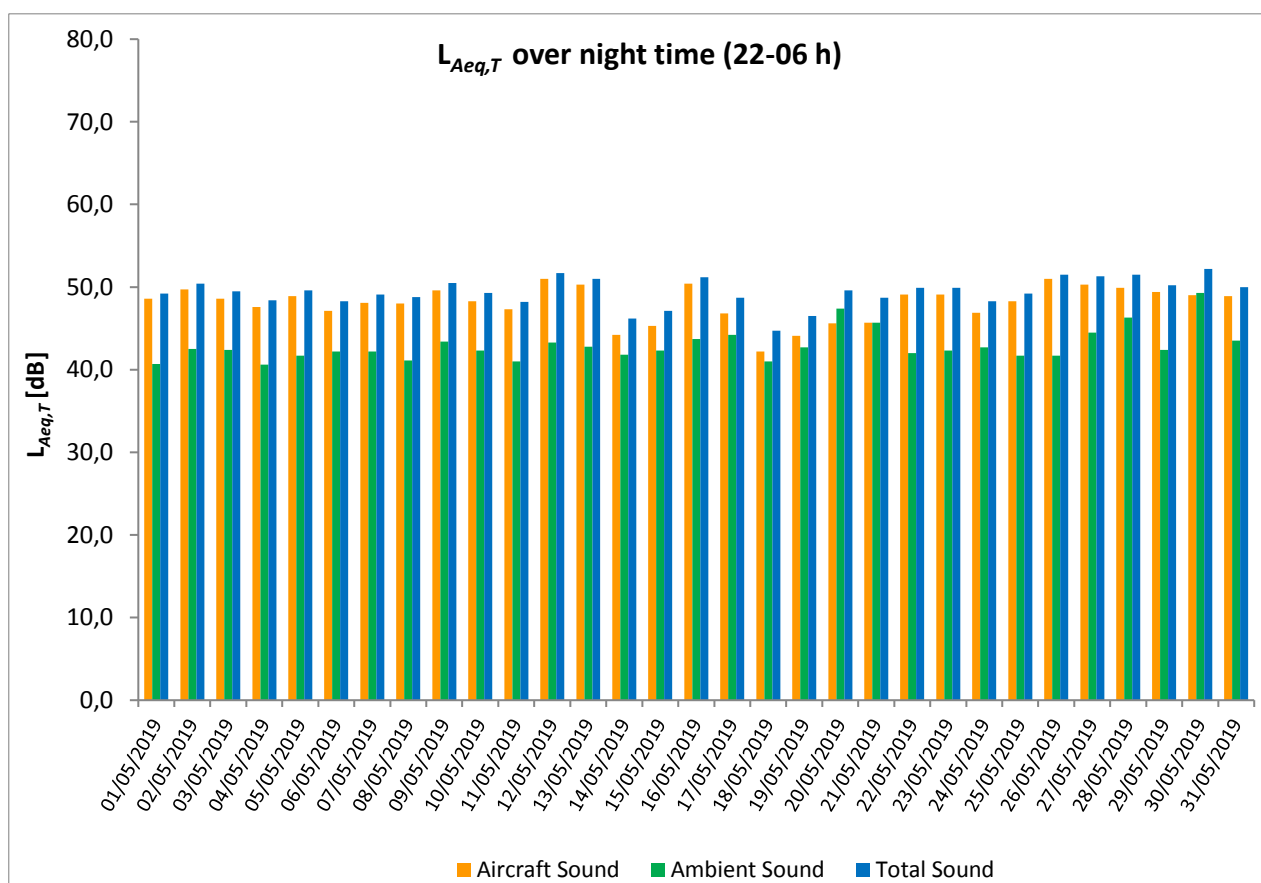
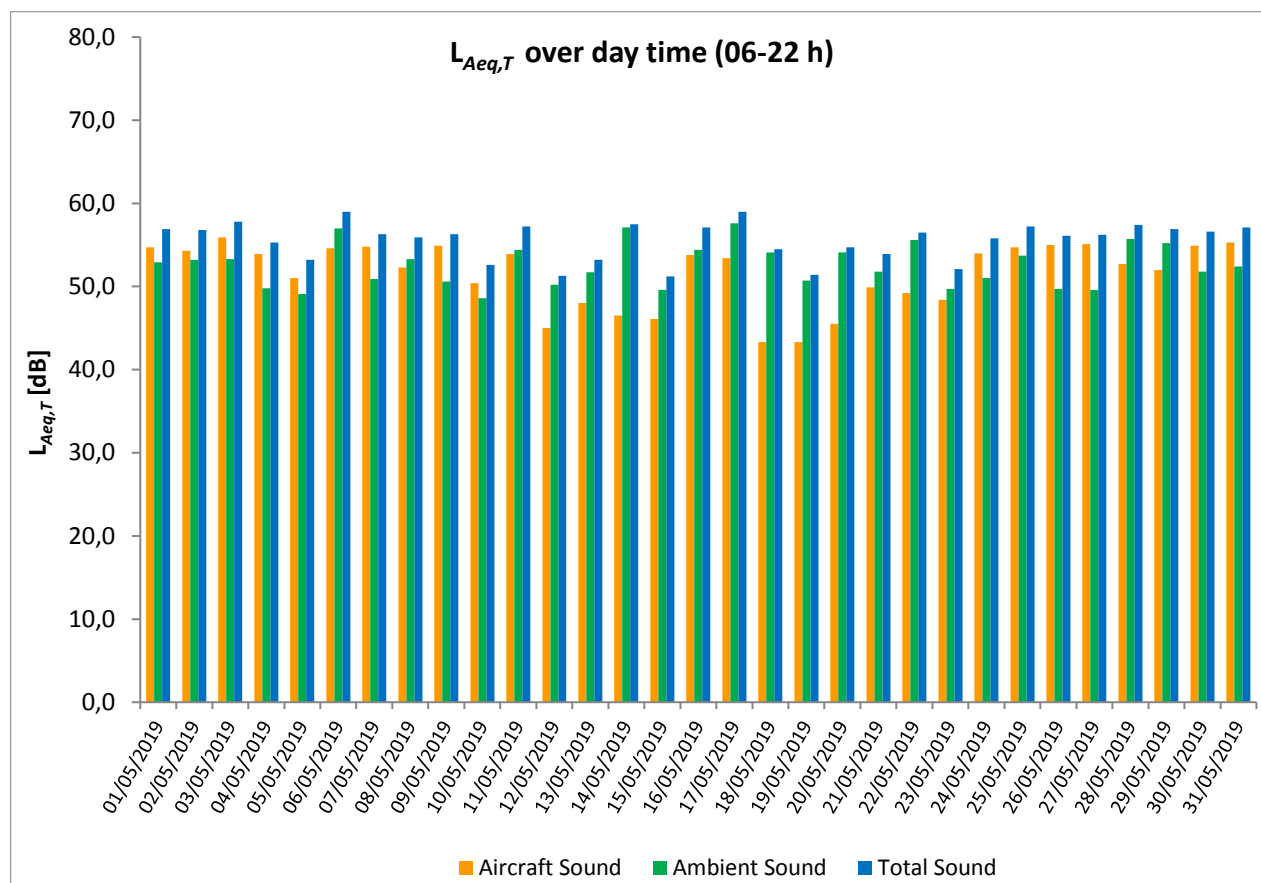
* Availability < 50%

** One or more events measured at wind speed above 5 m/s, not included into calculation

Equivalent Continuous Sound Pressure Level

MP03 Unhošť

May 2019



Equivalent Continuous Sound Pressure Level

MP04 Pavlov

May 2019

	Total Sound [dB]		Aircraft Sound [dB]		Ambient Sound [dB]	
	L _{Aeq,T} DAY	L _{Aeq,T} NIGHT	L _{Aeq,T} DAY	L _{Aeq,T} NIGHT	L _{Aeq,T} DAY	L _{Aeq,T} NIGHT
01/05/2019	57.0	51.2	55.5	49.2	51.4	46.9
02/05/2019	58.2	52.7	55.5	50.1	54.9	49.1
03/05/2019	58.1	50.6	56.9	49.6	52.1	43.9
04/05/2019	56.9	49.8	55.0	46.5	52.6	47.0
05/05/2019	54.7	49.6	49.1	48.0	53.4	44.6
06/05/2019	57.7	50.9	55.8	47.6	53.3	48.1
07/05/2019	57.8	51.9	55.8	48.8	53.3	49.0
08/05/2019	56.0	50.9	54.0	48.8	51.7	46.6
09/05/2019	57.5	52.1	56.4	50.6	51.1	46.7
10/05/2019	55.0	52.2	51.8	49.5	52.3	48.9
11/05/2019	57.8	51.2	54.6	46.7	55.0	49.3
12/05/2019	53.7	52.6	45.4	50.6	53.0	48.3
13/05/2019	57.9	52.4	48.5	50.6	57.3	47.6
14/05/2019	54.3	53.4	42.8	43.4	54.0	53.0
15/05/2019	53.7	52.0	42.3	46.5	53.4	50.6
16/05/2019	56.2	52.0	54.3	51.0	51.9	45.2
17/05/2019	55.4	52.4	51.7	46.5	53.0	51.2
18/05/2019	53.3	49.2	39.1	42.6	53.1	48.1
19/05/2019	54.6	48.3	39.2	40.6	54.4	47.5
20/05/2019	53.4	49.6	40.6	42.1	53.2	48.8
21/05/2019	55.4	51.5	50.2	47.4	53.8	49.4
22/05/2019	55.0	51.7	51.0	50.4	52.8	45.9
23/05/2019	54.8	52.4	47.3	48.7	54.0	50.0
24/05/2019	56.6	54.5	53.4	46.4	53.9	53.8
25/05/2019	57.1	52.3	55.7	48.6	51.6	49.8
26/05/2019	57.6	56.3	56.1	51.4	52.2	54.6
27/05/2019	57.5	53.2	56.0	50.8	52.2	49.4
28/05/2019	57.3	52.0	54.0	50.4	54.6	46.9
29/05/2019	55.4	51.7	48.6	49.1	54.4	48.2
30/05/2019	59.8	54.7	55.3	49.4	57.9	53.2
31/05/2019	57.8	52.6	56.1	49.5	52.8	49.6
Sum	56.6	52.2	53.4	48.8	53.7	49.5

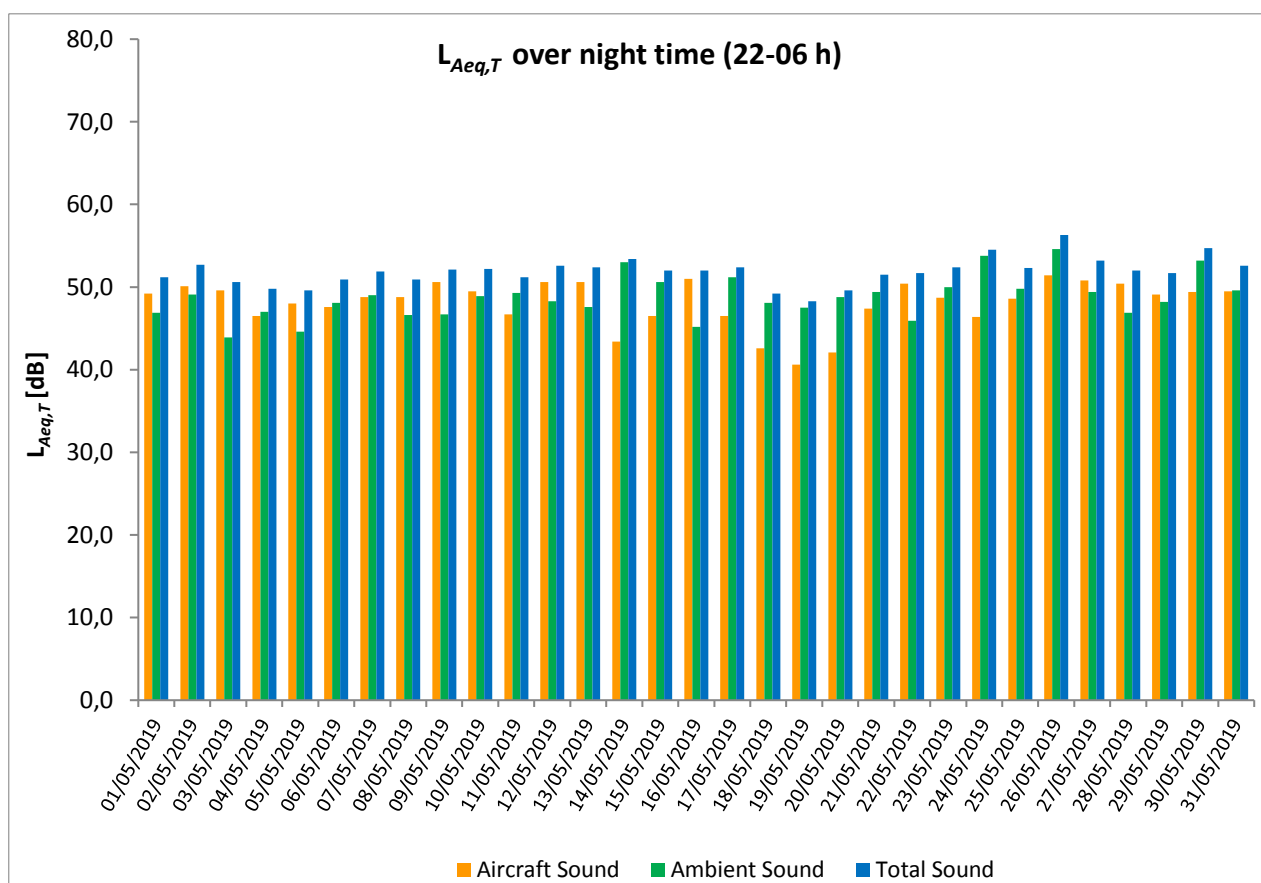
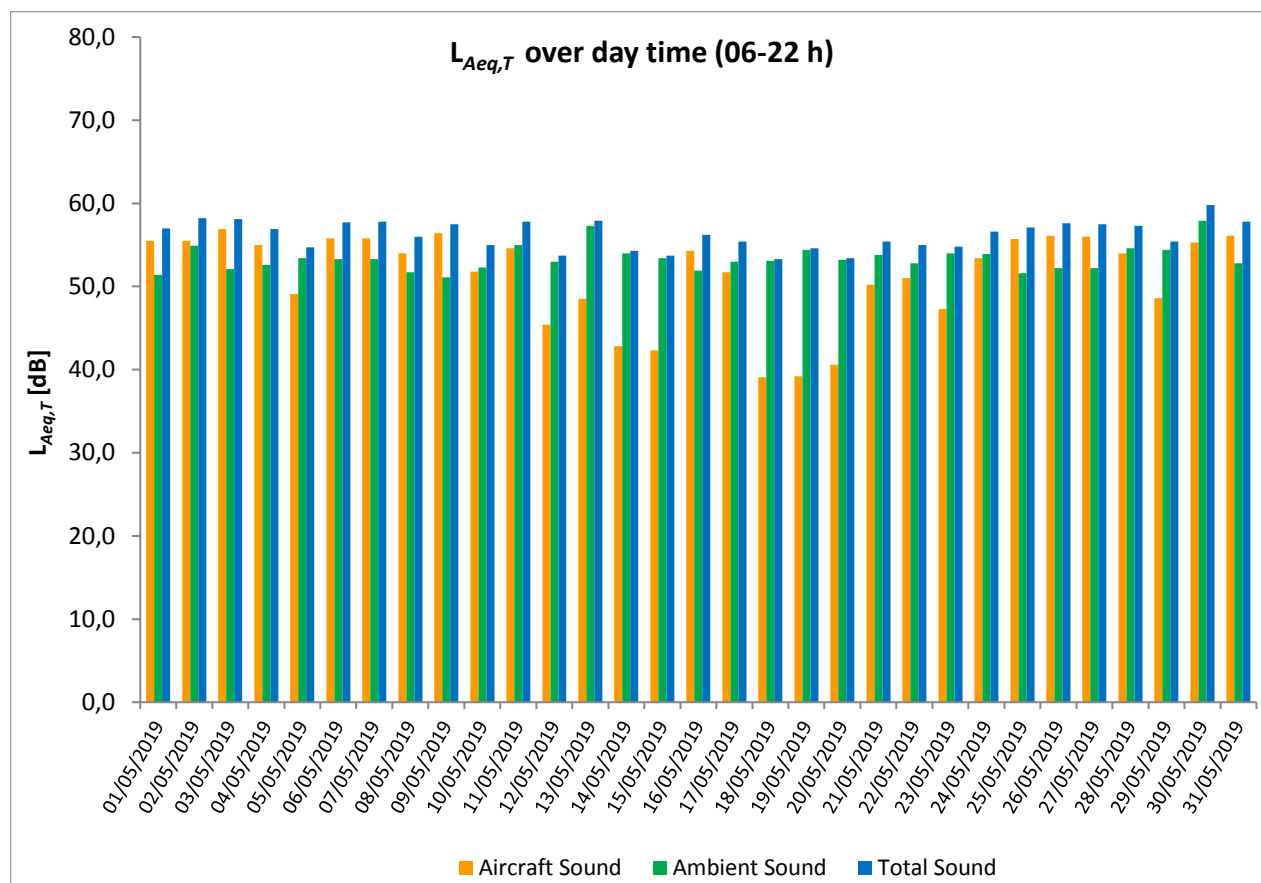
* Availability < 50%

** One or more events measured at wind speed above 5 m/s, not included into calculation

Equivalent Continuous Sound Pressure Level

MP04 Pavlov

May 2019



Equivalent Continuous Sound Pressure Level

MP05 Hostivice

May 2019

	Total Sound [dB]		Aircraft Sound [dB]		Ambient Sound [dB]	
	L _{Aeq,T} DAY	L _{Aeq,T} NIGHT	L _{Aeq,T} DAY	L _{Aeq,T} NIGHT	L _{Aeq,T} DAY	L _{Aeq,T} NIGHT
01/05/2019	50.8	44.8	45.5	39.9	49.2	43.0
02/05/2019	50.7	45.3	45.6**	40.3	49.1	43.7
03/05/2019	51.3	44.1	46.0	40.0	49.8	42.0
04/05/2019	51.1	42.5	42.8	37.7	50.4	40.8
05/05/2019	49.4	46.3	43.0	41.7	48.2	44.5
06/05/2019	51.2	46.6	43.9	41.1	50.3	45.2
07/05/2019	50.5	45.3	44.2	37.6	49.3	44.5
08/05/2019	47.1	42.3	40.3	34.9	46.0	41.4
09/05/2019	50.0	45.0	42.8	40.7	49.0	43.0
10/05/2019	49.4	45.4	41.7	42.2	48.6	42.7
11/05/2019	58.7	42.2	43.3	35.3	58.5	41.2
12/05/2019	50.5	45.9	36.0	40.8	50.4	44.3
13/05/2019	51.5	45.7	46.1	39.7	50.1	44.5
14/05/2019	51.5	45.9	40.1	40.5	51.2	44.4
15/05/2019	51.4	47.1	41.7	43.1	51.0	45.0
16/05/2019	49.7	45.5	42.3	41.0	48.9	43.5
17/05/2019	50.2	43.6	40.0	35.8	49.8	42.9
18/05/2019	49.6	41.9	33.8*	24.3*	49.5	41.8
19/05/2019	48.2	41.7	32.9*	24.8*	48.1	41.6
20/05/2019	50.0	42.3	42.0	26.3*	49.2	42.2
21/05/2019	52.5	44.6	39.0	40.4	52.3	42.5
22/05/2019	50.7	45.7	41.3	41.5	50.2	43.6
23/05/2019	51.1	45.6	40.9	38.5	50.7	44.7
24/05/2019	54.6	45.4	40.2	36.7	54.4	44.8
25/05/2019	50.9	42.9	40.8	34.5	50.5	42.2
26/05/2019	51.5	43.9	44.4	39.7	50.6	41.7
27/05/2019	51.4	45.4	40.2	38.9	51.1	44.4
28/05/2019	51.5	45.6	41.3	37.8	51.1	44.9
29/05/2019	52.2	46.3	41.7	38.8	51.8	45.4
30/05/2019	50.6	46.3	44.4	39.1	49.3	45.4
31/05/2019	57.5	45.4	45.0	37.3	57.2	44.6
Sum	52.0	45.0	42.6	39.2	51.5	43.6

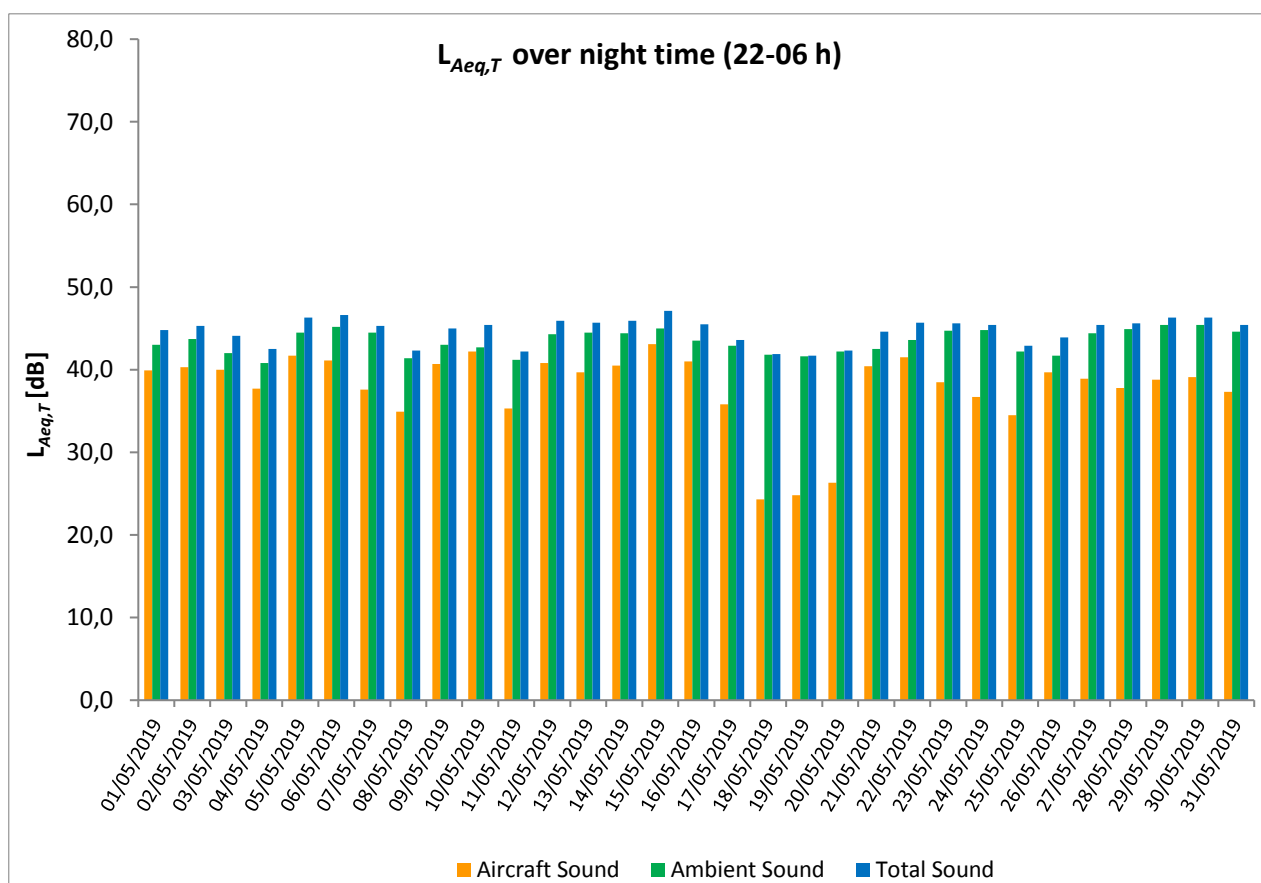
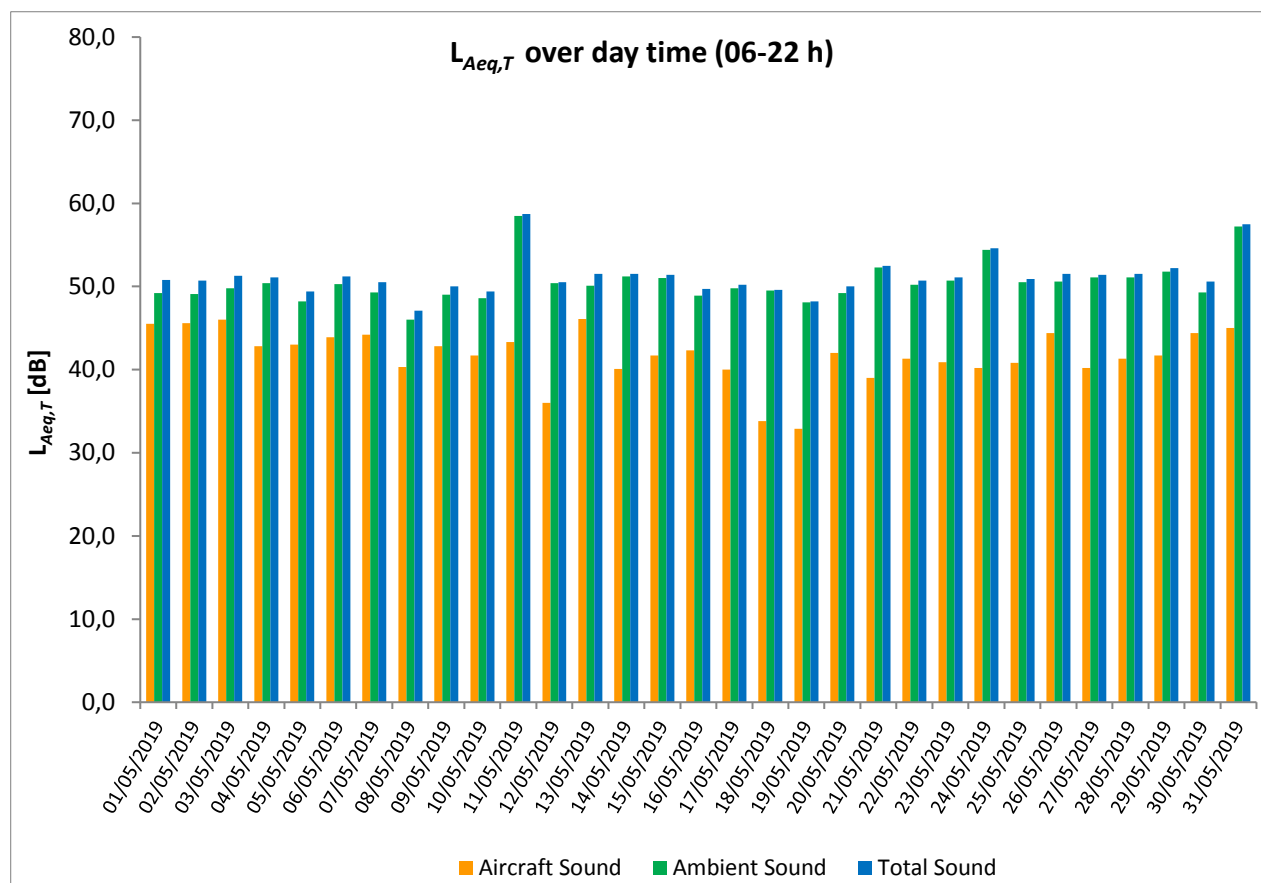
* Availability < 50% (distance to background noise too low)

** One or more events measured at wind speed above 5 m/s, not included into calculation

Equivalent Continuous Sound Pressure Level

MP05 Hostivice

May 2019



Equivalent Continuous Sound Pressure Level

MP06 Dobrovíz

May 2019

	Total Sound [dB]		Aircraft Sound [dB]		Ambient Sound [dB]	
	L _{Aeq,T} DAY	L _{Aeq,T} NIGHT	L _{Aeq,T} DAY	L _{Aeq,T} NIGHT	L _{Aeq,T} DAY	L _{Aeq,T} NIGHT
01/05/2019	59.7	46.6	52.3	43.8	58.9	43.5
02/05/2019	55.3	47.6	53.0	45.9	51.4	42.6
03/05/2019	54.8	49.7	53.5	45.7	48.8	47.4
04/05/2019	54.4	45.4	51.5	43.0	51.2	41.6
05/05/2019	50.3	44.1	43.5	42.0	49.3	40.0
06/05/2019	53.2	45.3	51.9	43.2	47.4	41.3
07/05/2019	54.9	47.3	52.7	45.3	51.0	43.0
08/05/2019	56.7	47.9	51.1	45.3	55.4	44.4
09/05/2019	55.2	49.1	53.4	47.2	50.4	44.5
10/05/2019	60.8	48.5	60.1	46.5	52.5	44.3
11/05/2019	56.8	45.9	53.5	42.3	54.0	43.4
12/05/2019	62.3	47.6	59.7	44.4	58.9	44.9
13/05/2019	61.2	47.2	58.6	44.4	57.7	44.0
14/05/2019	59.1	45.8	56.4**	42.4	55.8	43.2
15/05/2019	60.5	43.9	59.1**	39.6	54.9	41.9
16/05/2019	55.9	48.5	54.1	46.8	51.0	43.5
17/05/2019	56.7	48.6	52.1	45.3	54.9	45.7
18/05/2019	55.7	50.4	53.7	48.7	51.4	45.5
19/05/2019	56.1	49.8	53.9	48.3	52.2	44.6
20/05/2019	57.6	52.0	56.1	50.4	52.3	46.7
21/05/2019	57.9	48.9	57.0	46.5	50.5	45.1
22/05/2019	60.8	48.4	60.3	46.8	51.0	43.2
23/05/2019	61.0	47.0	60.7	44.6	49.3	43.4
24/05/2019	55.4	50.1	52.6	44.3	52.1	48.8
25/05/2019	58.8	47.5	53.4	43.6	57.3	45.2
26/05/2019	56.9	48.7	52.6	46.2	54.9	45.2
27/05/2019	54.7	49.0	52.7	47.2	50.3	44.5
28/05/2019	59.4	48.4	58.9	45.5	49.9	45.4
29/05/2019	52.7	47.0	47.0**	43.2	51.3	44.7
30/05/2019	56.2	48.9	53.7	46.7	52.7	44.9
31/05/2019	55.6	48.9	53.4	46.2	51.5	45.5
Sum	57.9	48.2	55.8	45.7	53.7	44.6

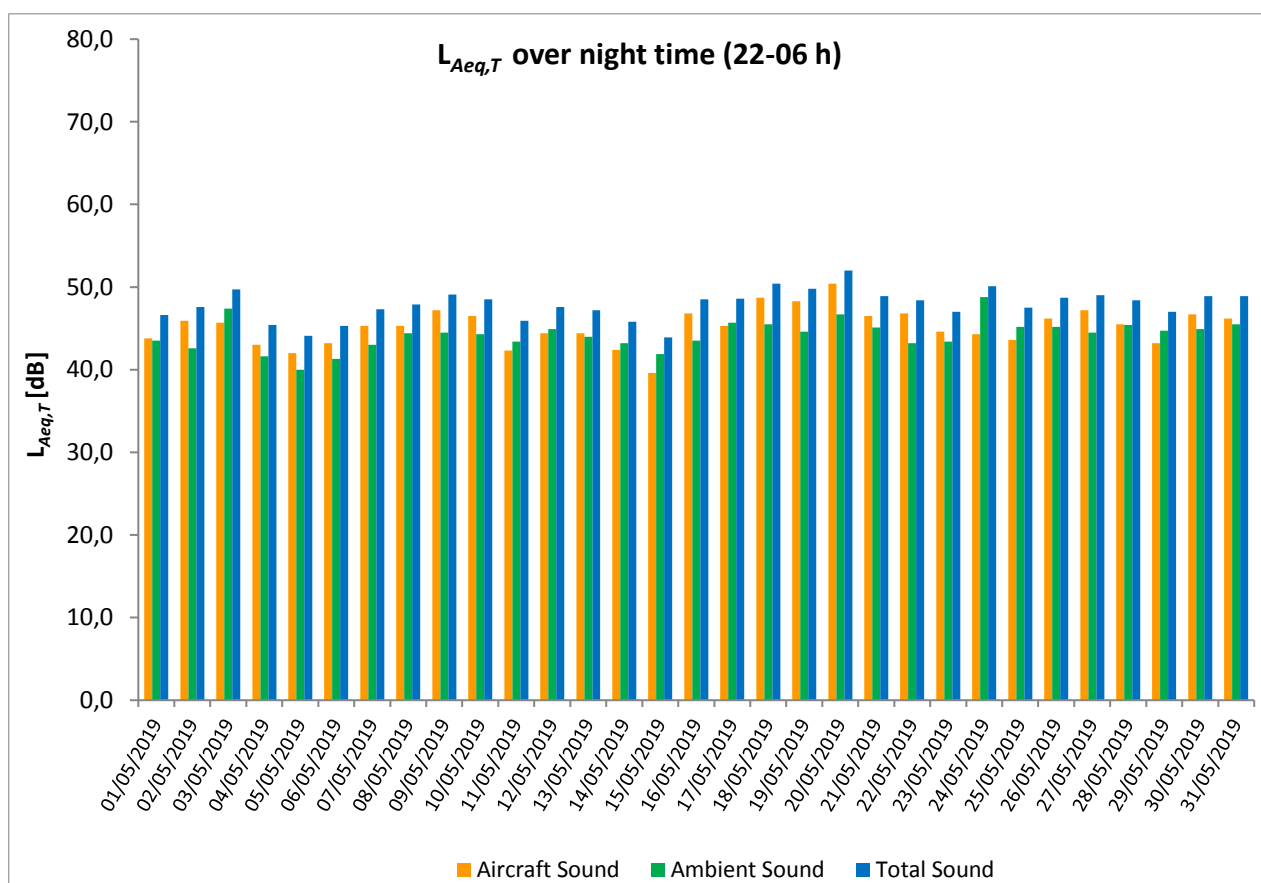
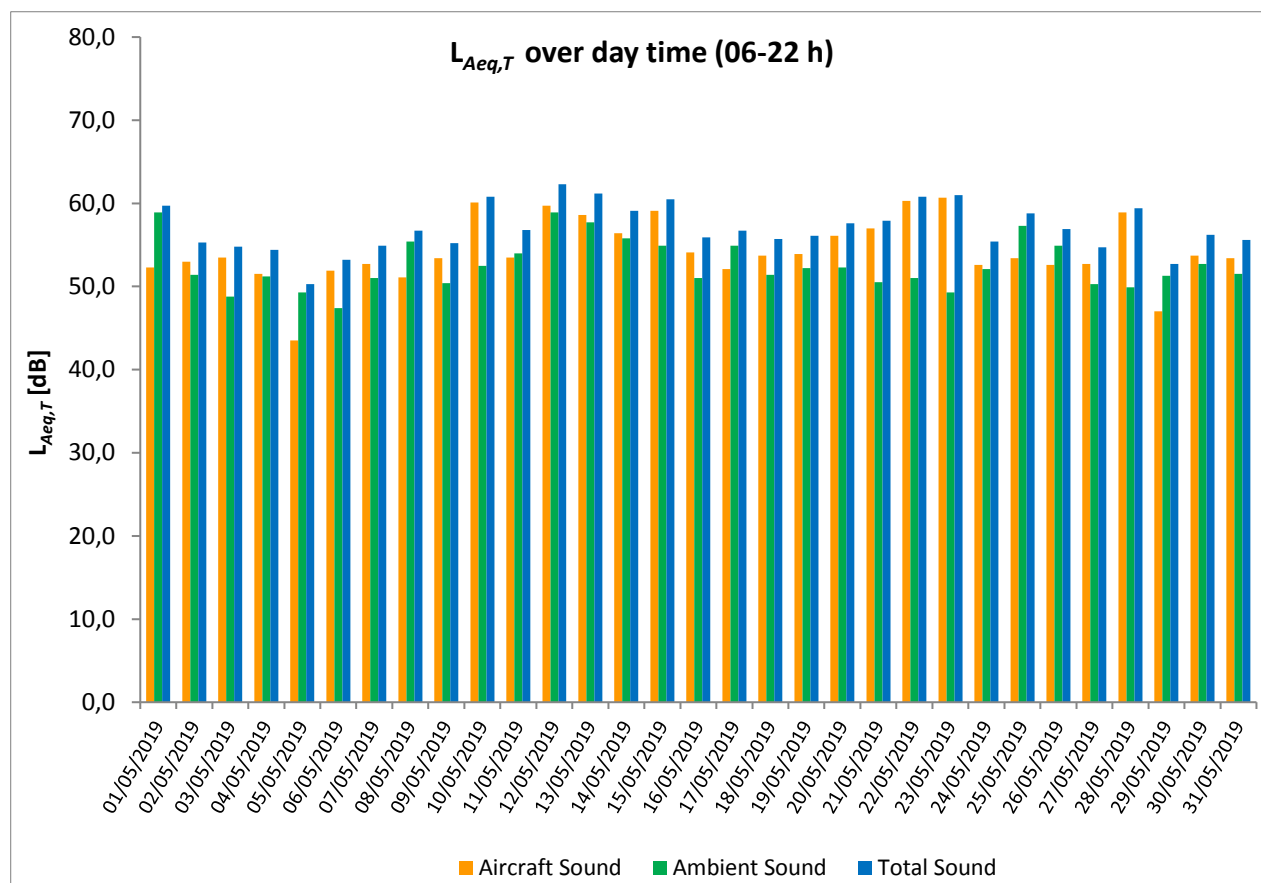
* Availability < 50%

** One or more events measured at wind speed above 5 m/s, not included into calculation

Equivalent Continuous Sound Pressure Level

MP06 Dobrovíz

May 2019



Equivalent Continuous Sound Pressure Level

MP07 Kněževy

May 2019

	Total Sound [dB]		Aircraft Sound [dB]		Ambient Sound [dB]	
	L _{Aeq,T} DAY	L _{Aeq,T} NIGHT	L _{Aeq,T} DAY	L _{Aeq,T} NIGHT	L _{Aeq,T} DAY	L _{Aeq,T} NIGHT
01/05/2019	55.7	50.5	52.0	48.0	53.4	47.0
02/05/2019	54.8	49.2	52.4	46.1	51.2	46.3
03/05/2019	53.1	50.1	47.1**	48.3	51.8	45.4
04/05/2019	56.6	49.0	54.6	47.5	52.3	43.6
05/05/2019	54.1	46.6	53.1	43.9	47.1	43.2
06/05/2019	51.8	46.5	44.4	43.0	50.9	43.9
07/05/2019	55.2	51.1	51.5	48.1	52.7	48.0
08/05/2019	57.9	54.9	56.3	52.9	52.7	50.7
09/05/2019	58.5	52.2	56.2	49.6	54.6	48.6
10/05/2019	54.7	50.0	51.8	47.6	51.6	46.2
11/05/2019	59.4	52.2	57.4**	51.0	55.0	46.2
12/05/2019	54.9	48.9	51.5**	47.1	52.2	44.2
13/05/2019	54.1	50.5	50.8	36.6	51.3	50.4
14/05/2019	55.9	48.1	52.4	44.9	53.2	45.2
15/05/2019	54.8	47.4	53.1	44.4	49.8	44.5
16/05/2019	55.4	49.5	52.8	46.0	51.9	46.9
17/05/2019	58.1	54.4	56.2	52.0	53.7	50.7
18/05/2019	55.1	52.6	51.2	50.2	52.9	48.9
19/05/2019	54.1	52.6	51.0	50.6	51.2	48.3
20/05/2019	56.1	53.9	52.7	51.7	53.5	50.0
21/05/2019	54.3	50.8	50.3	48.2	52.2	47.3
22/05/2019	54.4	47.6	51.6	42.9	51.1	45.8
23/05/2019	57.0	46.4	52.9	42.1	54.9	44.4
24/05/2019	55.9	52.6	51.3	49.3	54.0	49.9
25/05/2019	53.7	49.8	50.8	47.7	50.7	45.7
26/05/2019	56.0	51.2	54.1	49.9	51.4	45.3
27/05/2019	57.8	53.0	55.1	51.6	54.5	47.4
28/05/2019	53.8	50.2	50.5	47.2	51.1	47.2
29/05/2019	55.4	46.6	54.2	42.7	49.3	44.4
30/05/2019	52.9	51.9	48.9	49.4	50.6	48.4
31/05/2019	54.7	53.5	51.5	51.9	51.8	48.3
Sum	55.7	51.1	53.0	48.7	52.4	47.4

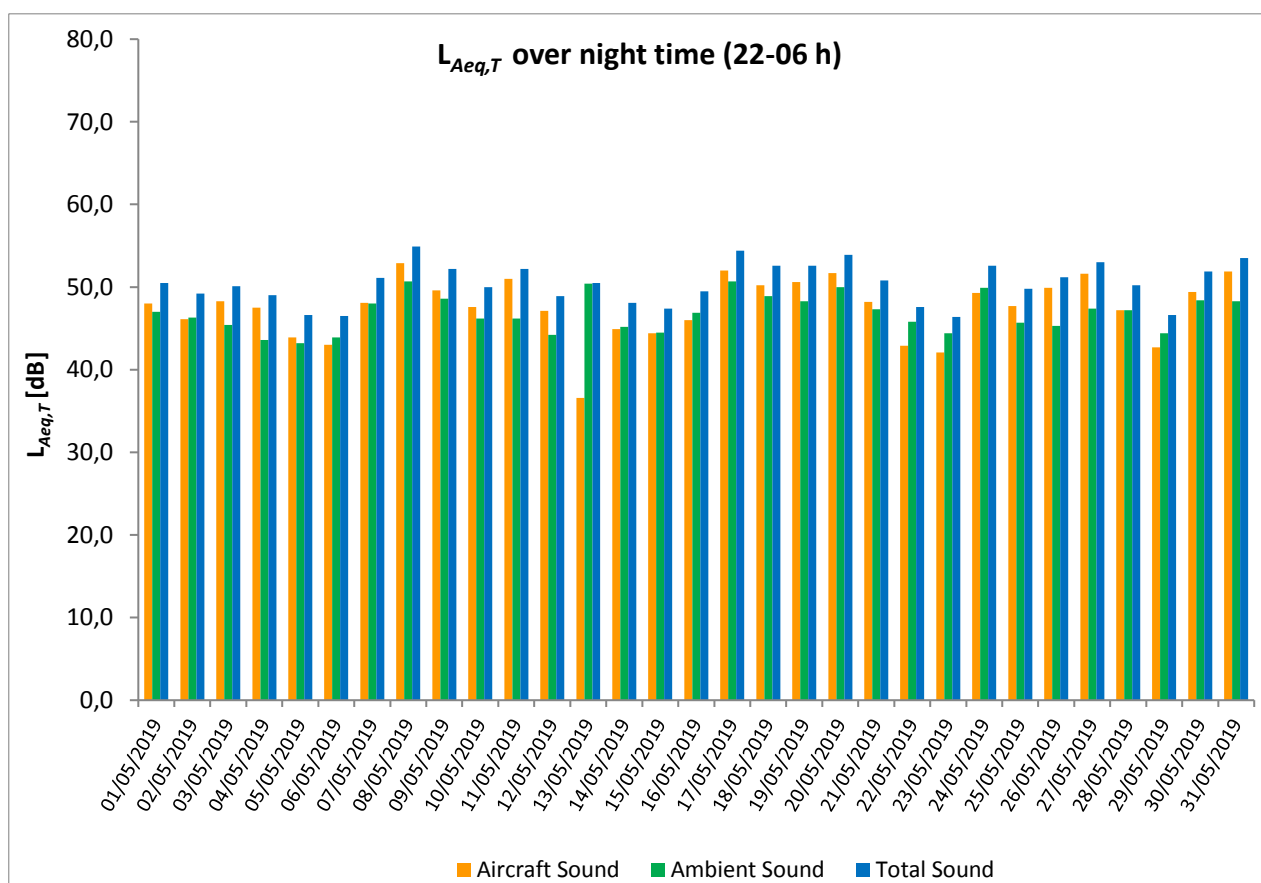
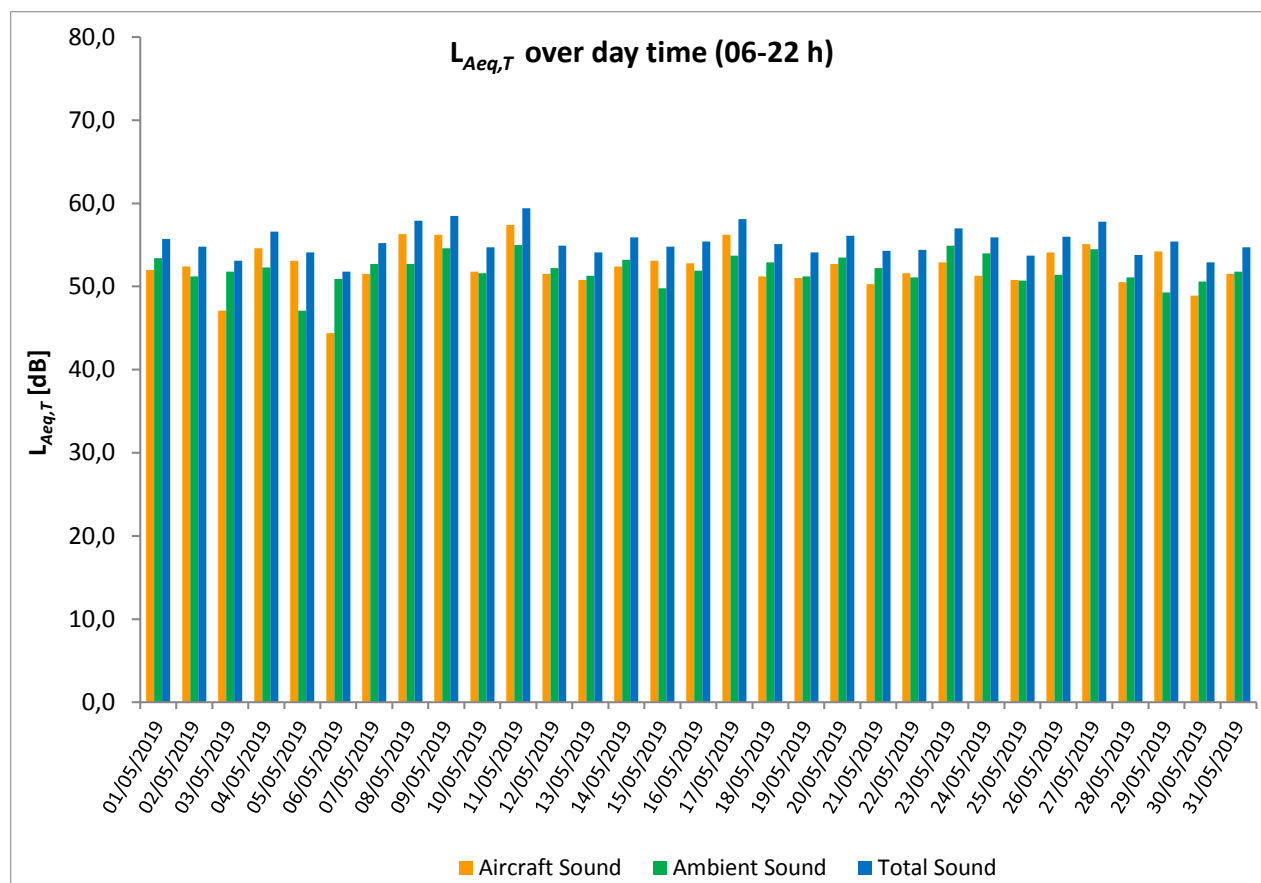
* Availability < 50%

** One or more events measured at wind speed above 5 m/s, not included into calculation

Equivalent Continuous Sound Pressure Level

MP07 Kněžves

May 2019



Equivalent Continuous Sound Pressure Level

MP08 Horoměřice střed

May 2019

	Total Sound [dB]		Aircraft Sound [dB]		Ambient Sound [dB]	
	L _{Aeq,T} DAY	L _{Aeq,T} NIGHT	L _{Aeq,T} DAY	L _{Aeq,T} NIGHT	L _{Aeq,T} DAY	L _{Aeq,T} NIGHT
01/05/2019	55.2	52.9	52.9	44.9	51.5	52.1
02/05/2019	55.3	49.2	52.7	45.6	51.9	46.8
03/05/2019	55.1	50.9	53.3	46.6	50.3	48.9
04/05/2019	55.6	53.1	53.8	43.8	50.9	52.5
05/05/2019	57.6	52.2	56.0	50.0	52.7	48.3
06/05/2019	54.6	53.1	52.3	49.7	50.7	50.4
07/05/2019	55.4	52.2	52.1	41.3	52.6	51.8
08/05/2019	58.4	55.8	55.2	44.7	55.6	55.4
09/05/2019	55.4	49.7	53.1	46.8	51.5	46.5
10/05/2019	52.3	51.2	46.6	49.3	50.9	46.8
11/05/2019	56.6	50.8	55.1	45.2	51.3	49.4
12/05/2019	52.5	50.7	44.0	46.0	51.9	48.8
13/05/2019	53.4	51.6	46.1	45.0	52.5	50.6
14/05/2019	55.9	52.2	52.8	49.7	53.0	48.7
15/05/2019	52.7	51.7	49.7	47.9	49.8	49.4
16/05/2019	54.7	49.2	53.3	46.8	49.0	45.4
17/05/2019	59.0	52.3	57.7	50.5	53.1	47.6
18/05/2019	56.2	52.5	51.7	51.2	54.3	46.6
19/05/2019	55.2	54.0	52.8	53.4	51.4	45.4
20/05/2019	55.2	53.4	54.1	52.2	48.8	47.2
21/05/2019	52.8	50.5	50.4	48.2	48.9	46.6
22/05/2019	51.2	50.4	48.2	46.6	48.1	48.2
23/05/2019	52.7	50.9	51.0	49.1	47.8	46.2
24/05/2019	57.8	51.9	55.6	48.8	53.7	49.0
25/05/2019	53.6	51.3	51.9	44.7	48.6	50.3
26/05/2019	54.7	49.7	52.6	45.8	50.5	47.4
27/05/2019	56.5	51.3	52.8	46.9	54.1	49.3
28/05/2019	52.6	51.1	50.8	45.8	48.0	49.6
29/05/2019	57.6	50.4	56.7	48.9	50.2	45.0
30/05/2019	55.1	48.7	52.6	46.0	51.4	45.4
31/05/2019	55.7	51.3	52.7	46.6	52.6	49.4
Sum	55.5	51.8	53.1	48.2	51.6	49.3

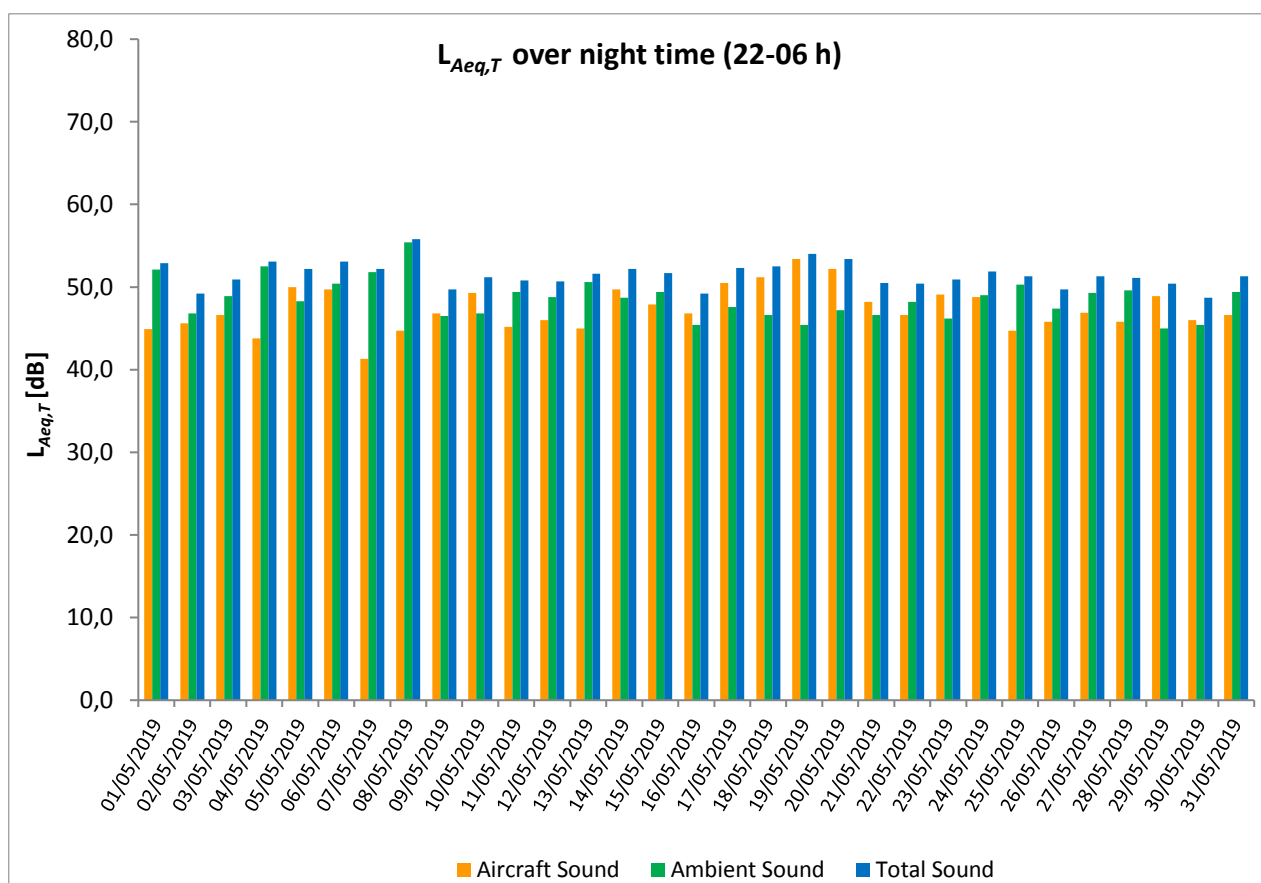
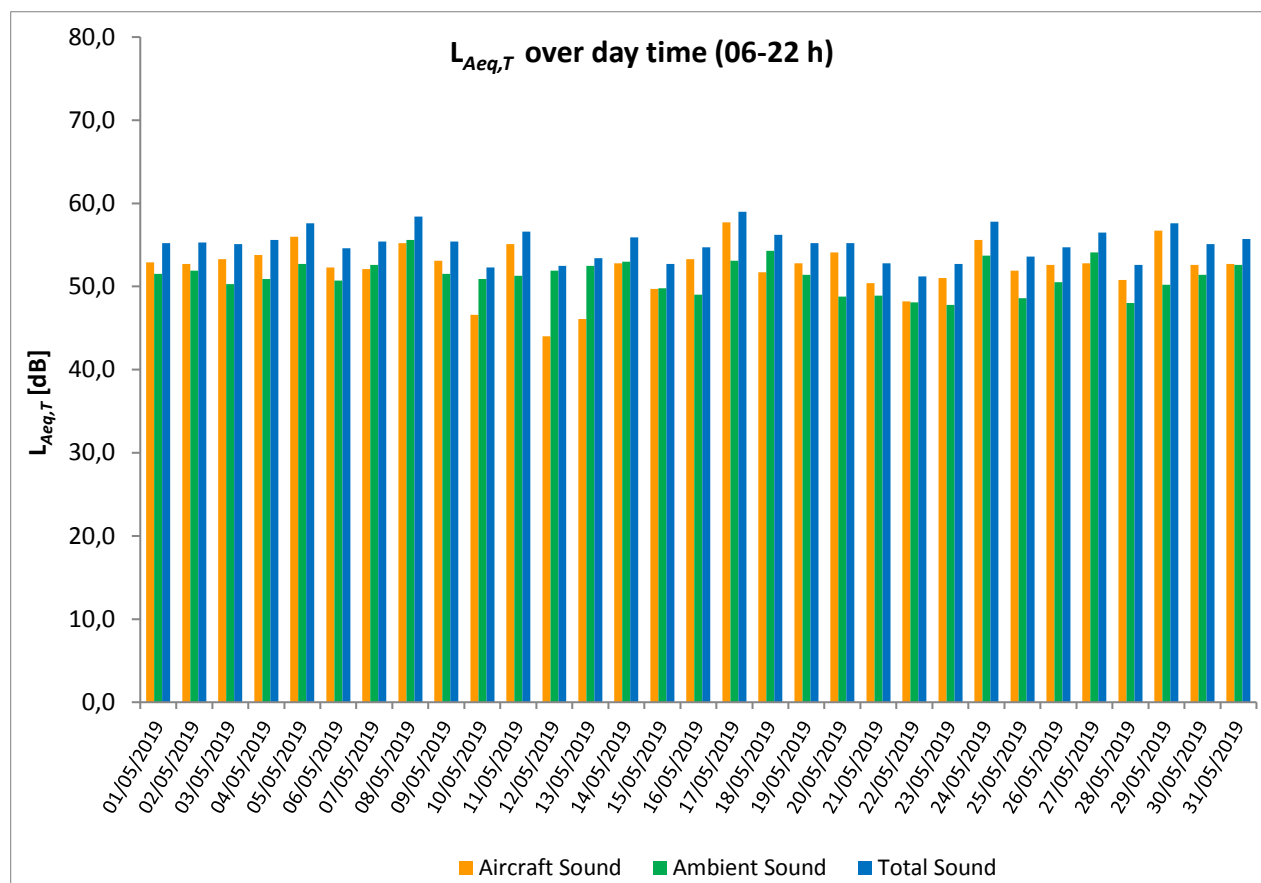
* Availability < 50%

** One or more events measured at wind speed above 5 m/s, not included into calculation

Equivalent Continuous Sound Pressure Level

MP08 Horoměřice střed

May 2019



Equivalent Continuous Sound Pressure Level

MP09 Praha - Přední Kopanina

May 2019

	Total Sound [dB]		Aircraft Sound [dB]		Ambient Sound [dB]	
	L _{Aeq,T} DAY	L _{Aeq,T} NIGHT	L _{Aeq,T} DAY	L _{Aeq,T} NIGHT	L _{Aeq,T} DAY	L _{Aeq,T} NIGHT
01/05/2019	65.1	46.3	48.5	39.1	65.1	45.4
02/05/2019	53.6	48.0	48.2	42.5	52.0	46.5
03/05/2019	53.2	48.9	49.7	44.9	50.6	46.8
04/05/2019	57.5	49.0	56.6	46.6	50.2	45.4
05/05/2019	61.0	53.4	60.3	52.8	52.7	44.3
06/05/2019	53.3	53.1	48.8	51.8	51.4	47.1
07/05/2019	56.2	46.6	48.7	37.5	55.3	46.1
08/05/2019	57.4	46.2	56.2	42.8	51.4	43.6
09/05/2019	56.9	48.1	52.0	44.0	55.2	46.0
10/05/2019	51.3	49.3	43.1	45.2	50.6	47.2
11/05/2019	58.1	47.2	56.3**	43.2	53.2	45.0
12/05/2019	49.7	48.4	40.2	43.2	49.2	46.8
13/05/2019	51.0	44.9	40.1	40.4	50.6	42.9
14/05/2019	58.8	53.6	57.2	53.1	53.6	43.2
15/05/2019	56.5	51.8	55.3	51.1	50.6	43.7
16/05/2019	52.9	47.7	50.2	43.4	49.5	45.6
17/05/2019	60.3	52.6	59.4	51.9	53.0	43.8
18/05/2019	55.9	53.5	54.5	53.1	50.4	43.6
19/05/2019	56.1	55.8	55.3	55.6	48.2	42.5
20/05/2019	57.4	54.9	56.3	54.6	50.8	43.5
21/05/2019	55.4	50.5	51.0	48.9	53.4	45.3
22/05/2019	52.9	48.7	44.9	41.0	52.1	47.9
23/05/2019	55.8	51.5	54.5	49.6	50.1	47.1
24/05/2019	57.8	50.3	57.0	49.1	49.9	44.3
25/05/2019	51.7	46.2	48.3	40.6	49.1	44.8
26/05/2019	52.0	46.1	49.0	41.1	49.0	44.5
27/05/2019	53.7	48.6	49.9	44.0	51.3	46.7
28/05/2019	52.7	48.9	48.1	43.9	50.9	47.3
29/05/2019	61.4	51.5	60.7	50.3	53.1	45.5
30/05/2019	54.2	46.8	49.2	41.5	52.6	45.2
31/05/2019	52.6	*	49.5	*	49.7	*
Sum	57.2	50.6	54.4	49.0	54.0	45.5

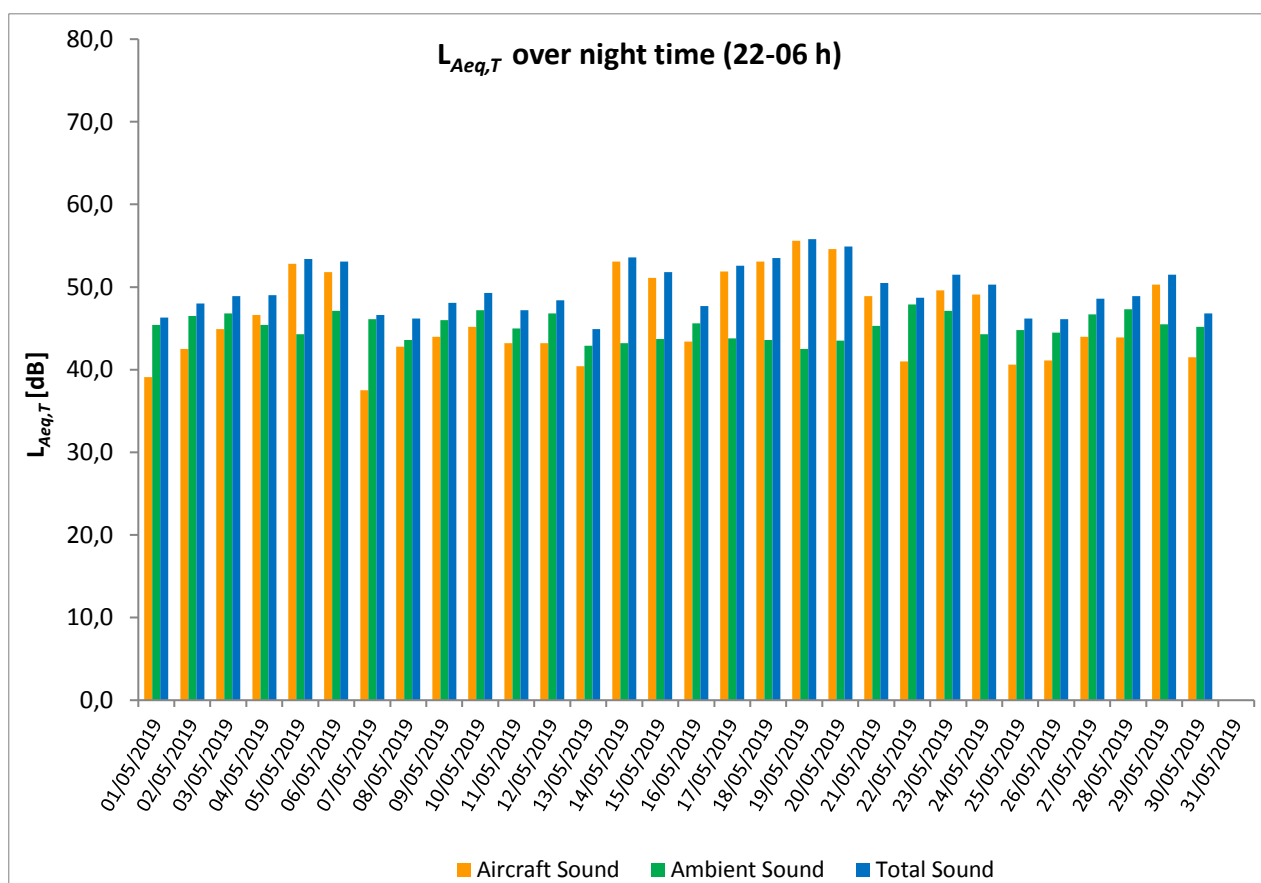
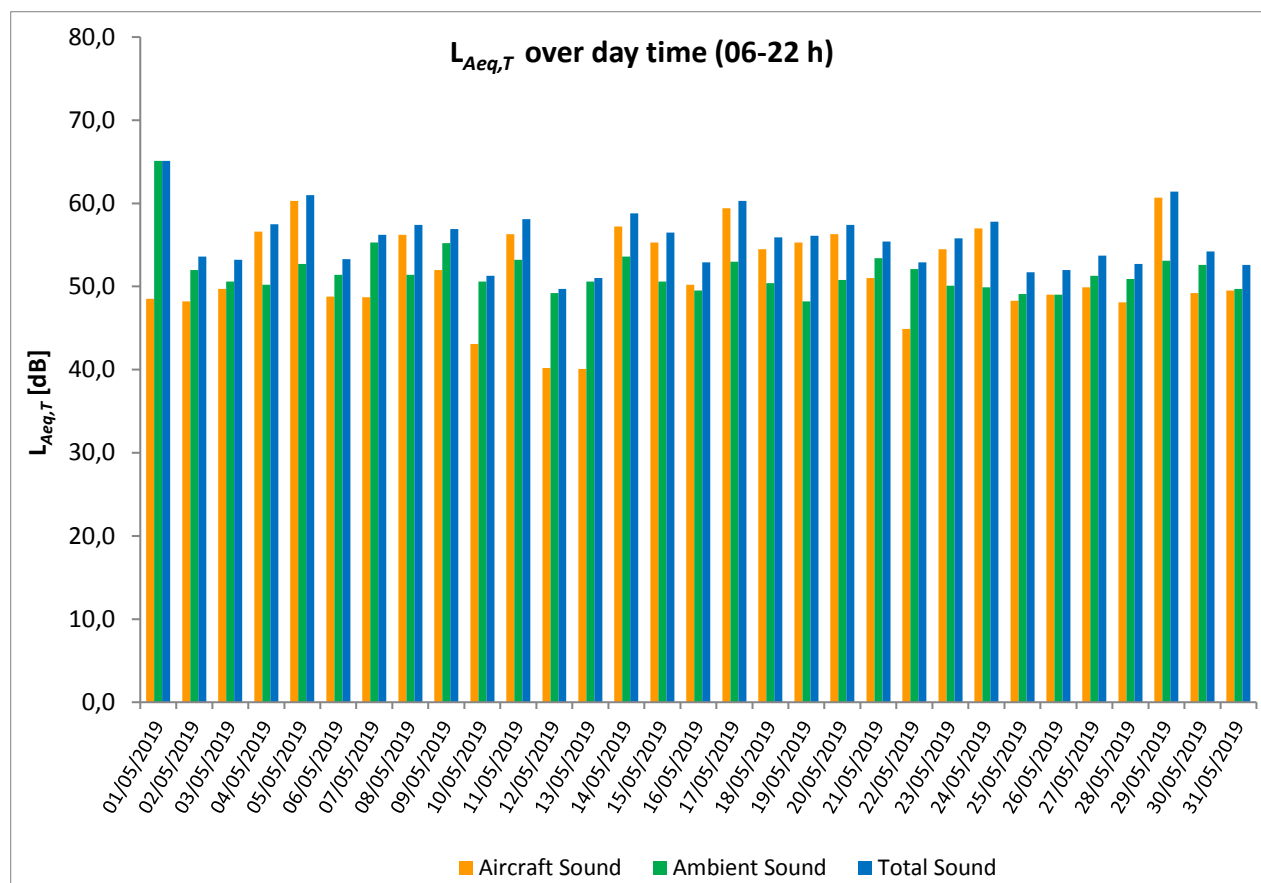
* Availability < 50%

** One or more events measured at wind speed above 5 m/s, not included into calculation

Equivalent Continuous Sound Pressure Level

MP09 Praha - Přední Kopanina

May 2019



Equivalent Continuous Sound Pressure Level

MP10 Horoměřice

May 2019

	Total Sound [dB]		Aircraft Sound [dB]		Ambient Sound [dB]	
	L _{Aeq,T} DAY	L _{Aeq,T} NIGHT	L _{Aeq,T} DAY	L _{Aeq,T} NIGHT	L _{Aeq,T} DAY	L _{Aeq,T} NIGHT
01/05/2019	52.8	43.8	50.5	41.5	49.0	39.9
02/05/2019	52.5	45.6	50.7	43.9	47.9	40.8
03/05/2019	54.2	46.1	51.3	44.6	51.1	40.7
04/05/2019	55.0	44.9	54.1	43.6	48.0	39.1
05/05/2019	59.0	51.7	57.8	51.3	53.0	41.7
06/05/2019	53.9	51.1	50.4	50.2	51.4	43.4
07/05/2019	52.7	43.3	49.8	40.4	49.6	40.2
08/05/2019	55.9	44.6	54.6	42.5	50.0	40.5
09/05/2019	52.9	46.1	50.9	44.6	48.5	41.0
10/05/2019	50.5	48.2	44.2	47.1	49.4	41.6
11/05/2019	55.7	44.6	54.5**	42.9	49.6	39.8
12/05/2019	47.4	46.1	42.6	44.2	45.7	41.7
13/05/2019	49.7	44.8	42.5	43.3	48.7	39.4
14/05/2019	55.8	51.2	54.2	50.7	50.7	41.7
15/05/2019	52.4	49.6	50.6	48.9	47.6	41.3
16/05/2019	52.7	46.9	51.4	45.3	46.8	41.8
17/05/2019	58.7	51.7	58.1	51.2	49.8	41.8
18/05/2019	53.3	51.9	52.2	51.4	47.0	42.0
19/05/2019	55.1	54.1	53.3	53.9	50.4	41.7
20/05/2019	56.0	53.2	54.8	52.9	49.8	41.6
21/05/2019	54.0	49.6	50.4	48.7	51.6	41.9
22/05/2019	51.0	47.3	46.6	45.8	49.0	42.2
23/05/2019	52.9	49.7	51.7	48.8	47.0	42.7
24/05/2019	57.9	49.9	55.9	49.2	53.7	42.0
25/05/2019	52.0	44.7	49.9	42.7	47.9	40.4
26/05/2019	52.3	45.9	50.3	43.7	48.0	42.0
27/05/2019	52.2	46.2	50.4	44.5	47.6	41.3
28/05/2019	51.5	46.2	49.0	43.8	48.0	42.5
29/05/2019	58.8	50.3	58.2	49.8	49.6	40.8
30/05/2019	53.6	46.2	50.6	43.9	50.7	42.3
31/05/2019	53.9	46.8	50.9	44.8	50.9	42.4
Sum	54.6	48.9	52.9	48.0	49.7	41.5

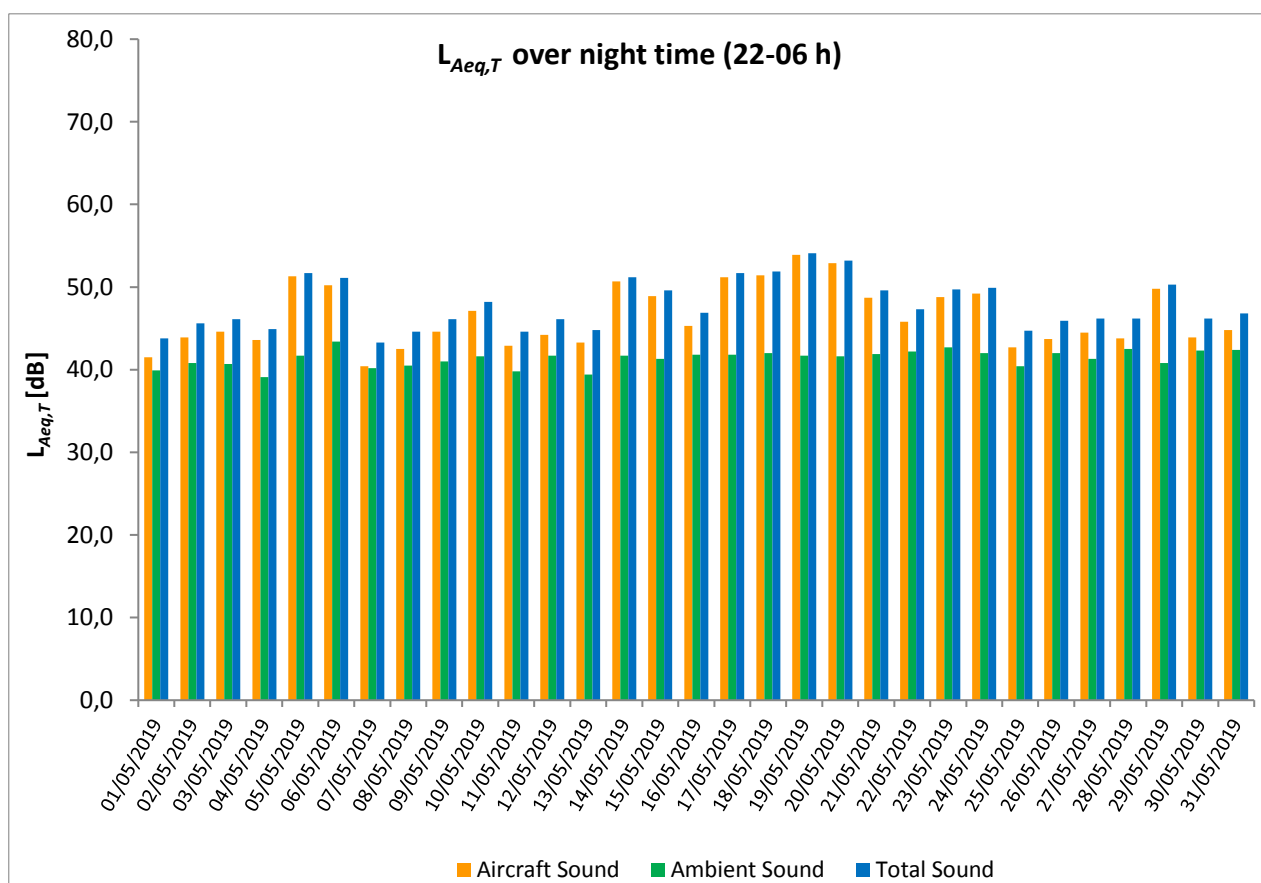
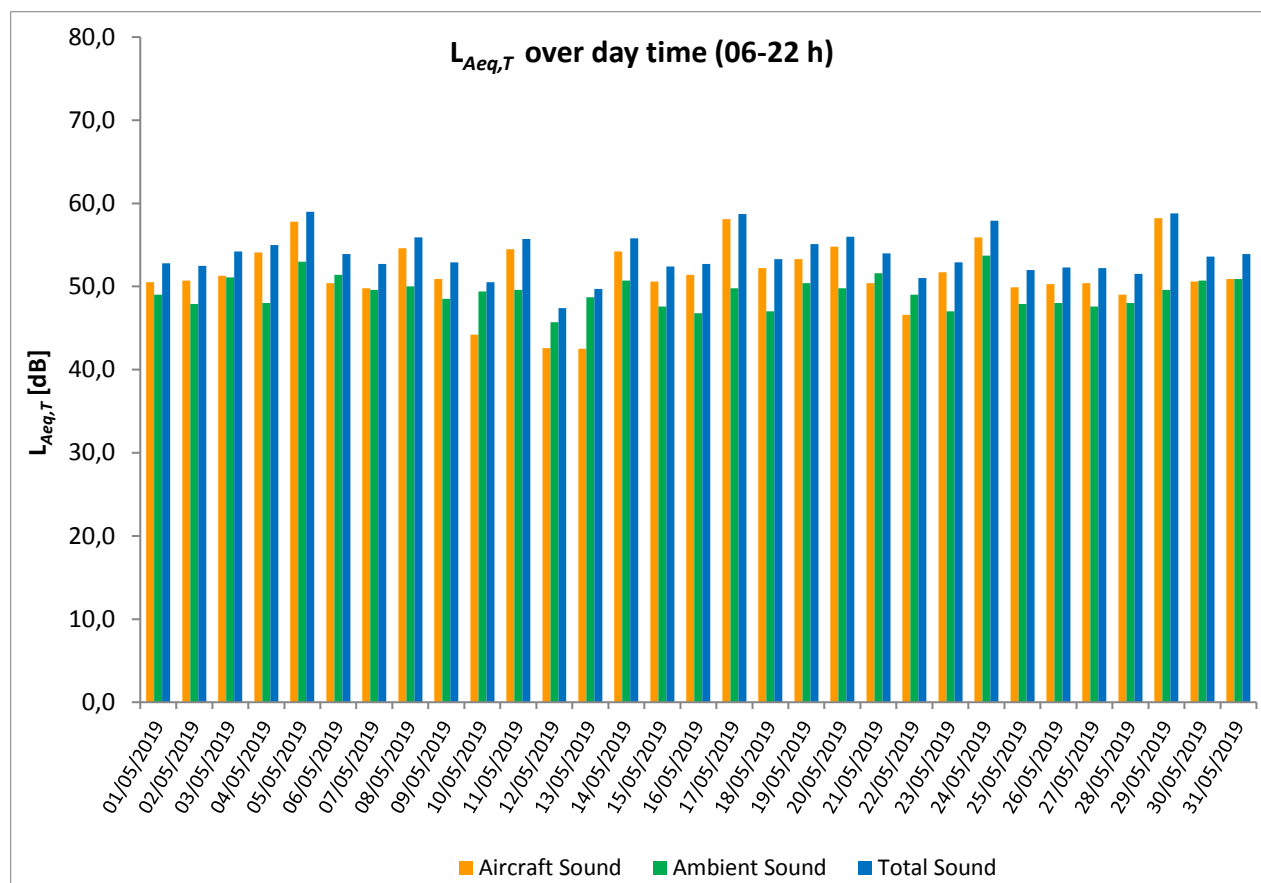
* Availability < 50%

** One or more events measured at wind speed above 5 m/s, not included into calculation

Equivalent Continuous Sound Pressure Level

MP10 Horoměřice

May 2019



Equivalent Continuous Sound Pressure Level

MP11 Roztoky

May 2019

	Total Sound [dB]		Aircraft Sound [dB]		Ambient Sound [dB]	
	L _{Aeq,T} DAY	L _{Aeq,T} NIGHT	L _{Aeq,T} DAY	L _{Aeq,T} NIGHT	L _{Aeq,T} DAY	L _{Aeq,T} NIGHT
01/05/2019	53.8	45.6	52.4	42.4	48.1	42.7
02/05/2019	54.3	49.4	52.2	44.7	50.2	47.6
03/05/2019	55.5	50.2	53.2	46.8	51.6	47.6
04/05/2019	54.7	47.8	53.0	43.1	49.8	46.0
05/05/2019	55.3	50.8	53.9	48.3	49.7	47.3
06/05/2019	55.3	51.0	52.1	47.9	52.5	48.1
07/05/2019	53.1	48.6	51.6	42.4	47.9	47.5
08/05/2019	54.5	48.1	53.5	44.2	47.6	45.8
09/05/2019	55.8	48.1	53.1	45.7	52.3	44.4
10/05/2019	51.7	49.1	46.4	47.8	50.1	43.1
11/05/2019	55.5	48.8	53.4	45.3	51.3	46.2
12/05/2019	48.7	49.4	42.6	45.7	47.4	47.0
13/05/2019	48.4	47.5	44.1	44.6	46.4	44.3
14/05/2019	52.5	49.1	49.5	46.9	49.4	45.0
15/05/2019	49.9	47.6	45.7	46.2	47.9	41.9
16/05/2019	53.9	49.1	52.1	46.7	49.2	45.5
17/05/2019	55.8	49.2	54.6	47.9	49.6	43.4
18/05/2019	54.7	50.6	48.7	48.8	53.5	45.9
19/05/2019	51.6	51.5	49.3	50.2	47.8	45.6
20/05/2019	53.5	51.2	50.6	49.5	50.3	46.3
21/05/2019	51.2	49.2	48.7	45.4	47.7	46.9
22/05/2019	52.2	49.5	47.6	46.0	50.3	47.0
23/05/2019	51.0	50.0	48.3	47.9	47.7	45.9
24/05/2019	54.8	50.2	53.7	46.7	48.4	47.6
25/05/2019	54.2	49.1	51.9	43.8	50.2	47.6
26/05/2019	53.3	48.8	52.2	45.1	46.9	46.4
27/05/2019	54.8	50.8	52.5	45.2	50.9	49.4
28/05/2019	54.0	50.6	50.6	45.5	51.4	49.0
29/05/2019	57.0	51.4	54.0	47.4	54.0	49.3
30/05/2019	55.1	50.9	52.1	45.3	52.1	49.6
31/05/2019	56.2	49.7	52.8	46.4	53.6	46.9
Sum	54.1	49.6	51.7	46.5	50.4	46.7

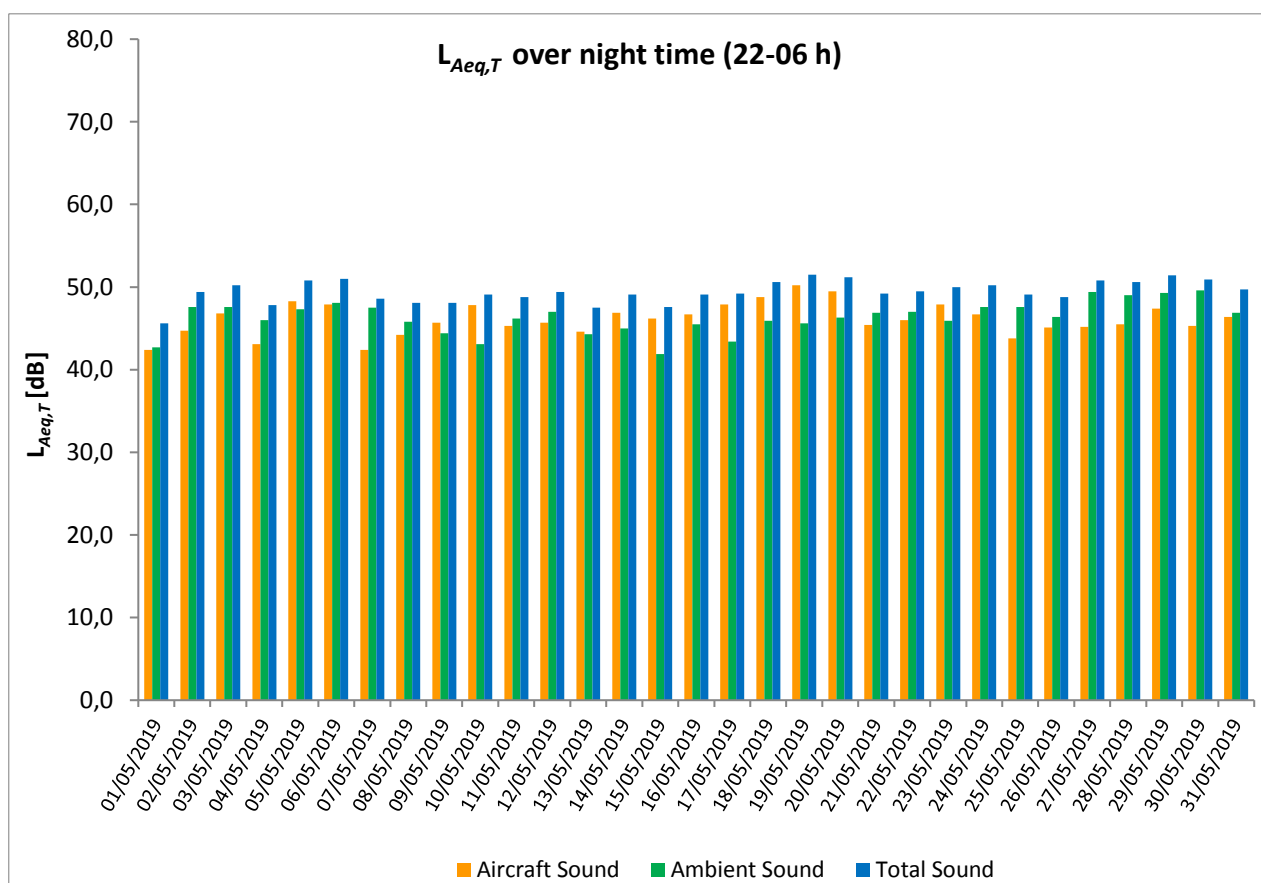
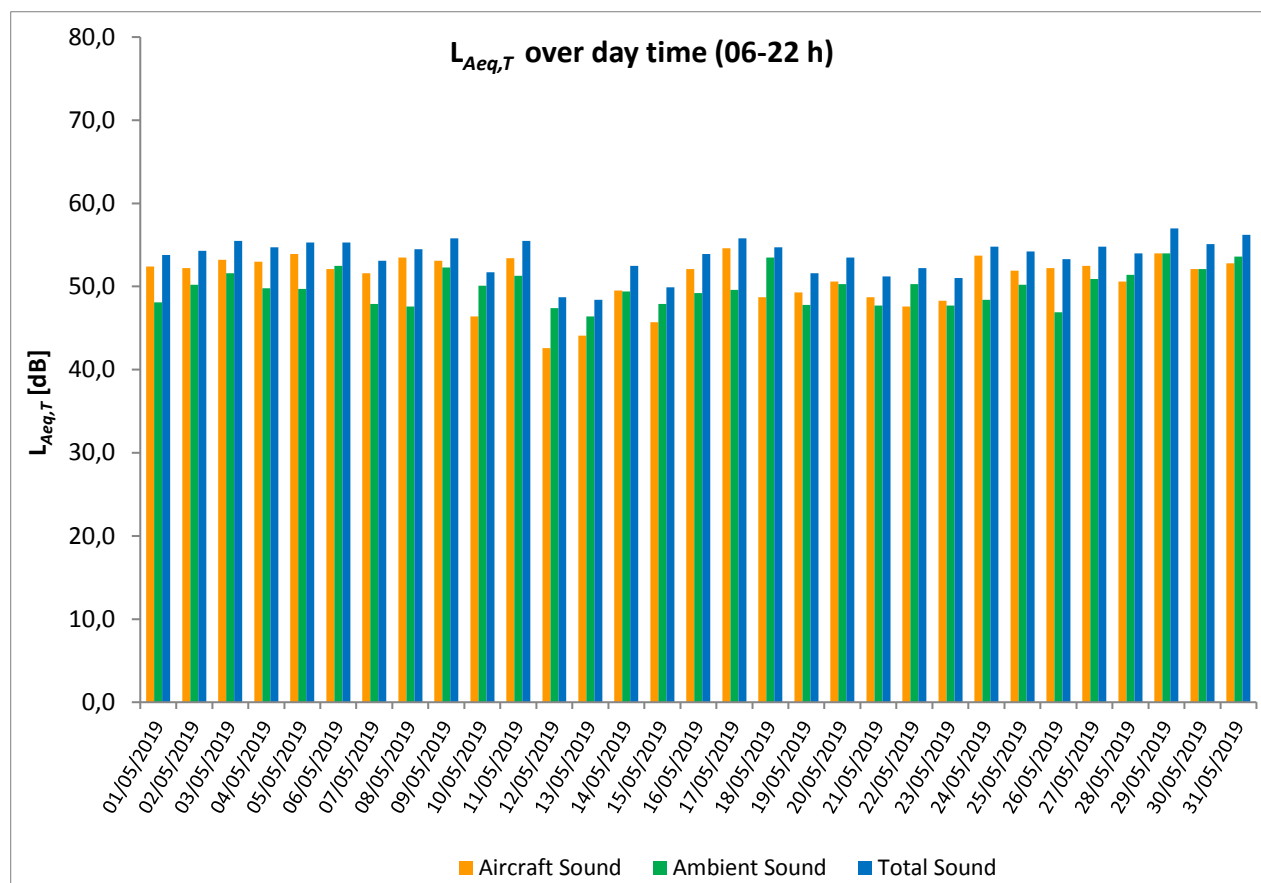
* Availability < 50%

** One or more events measured at wind speed above 5 m/s, not included into calculation

Equivalent Continuous Sound Pressure Level

MP11 Roztoky

May 2019



Equivalent Continuous Sound Pressure Level

MP12 Praha 17 - Řepry

May 2019

	Total Sound [dB]		Aircraft Sound [dB]		Ambient Sound [dB]	
	L _{Aeq,T} DAY	L _{Aeq,T} NIGHT	L _{Aeq,T} DAY	L _{Aeq,T} NIGHT	L _{Aeq,T} DAY	L _{Aeq,T} NIGHT
01/05/2019	51.4	41.3			51.4	41.3
02/05/2019	51.3	43.7	25.7		51.3	43.7
03/05/2019	51.2	42.1			51.2	42.1
04/05/2019	49.7	41.8			49.7	41.8
05/05/2019	45.2	40.8			45.2	40.8
06/05/2019	48.0	40.3			48.0	40.3
07/05/2019	48.4	40.4			48.4	40.4
08/05/2019	48.0	38.3			48.0	38.3
09/05/2019	56.6	43.7		38.2	56.6	42.3
10/05/2019	62.7	46.7	62.3	44.8	52.2	42.0
11/05/2019	54.6	40.3	30.7		54.6	40.3
12/05/2019	63.8	49.1	63.6	48.3	49.3	41.7
13/05/2019	62.7	45.3	62.5	43.0	49.4	41.4
14/05/2019	60.5	46.4	60.3	44.6	46.5	41.6
15/05/2019	62.9	41.2	62.6		50.6	41.2
16/05/2019	48.8	40.8	32.9		48.7	40.8
17/05/2019	49.1	40.2			49.1	40.2
18/05/2019	60.7	42.8	60.5	37.8	46.8	41.1
19/05/2019	60.3	40.3	60.1		45.5	40.3
20/05/2019	61.5	38.8	61.2		49.0	38.8
21/05/2019	60.9	45.0	58.5	38.1	57.2	44.0
22/05/2019	63.4	42.3	63.1		50.5	42.3
23/05/2019	62.8	43.5	62.4		51.8	43.5
24/05/2019	51.3	41.5	39.3		51.0	41.5
25/05/2019	58.5	41.9	33.1		58.5	41.9
26/05/2019	51.5	38.5	23.6		51.5	38.5
27/05/2019	47.4	42.5	34.3		47.1	42.5
28/05/2019	58.6	44.4	58.3		46.8	44.4
29/05/2019	49.1	41.8	38.2		48.7	41.8
30/05/2019	51.7	40.4	42.2		51.2	40.4
31/05/2019	48.1	40.9	38.7		47.6	40.9
Sum	58.5	43.0	57.5	37.3	51.5	41.6

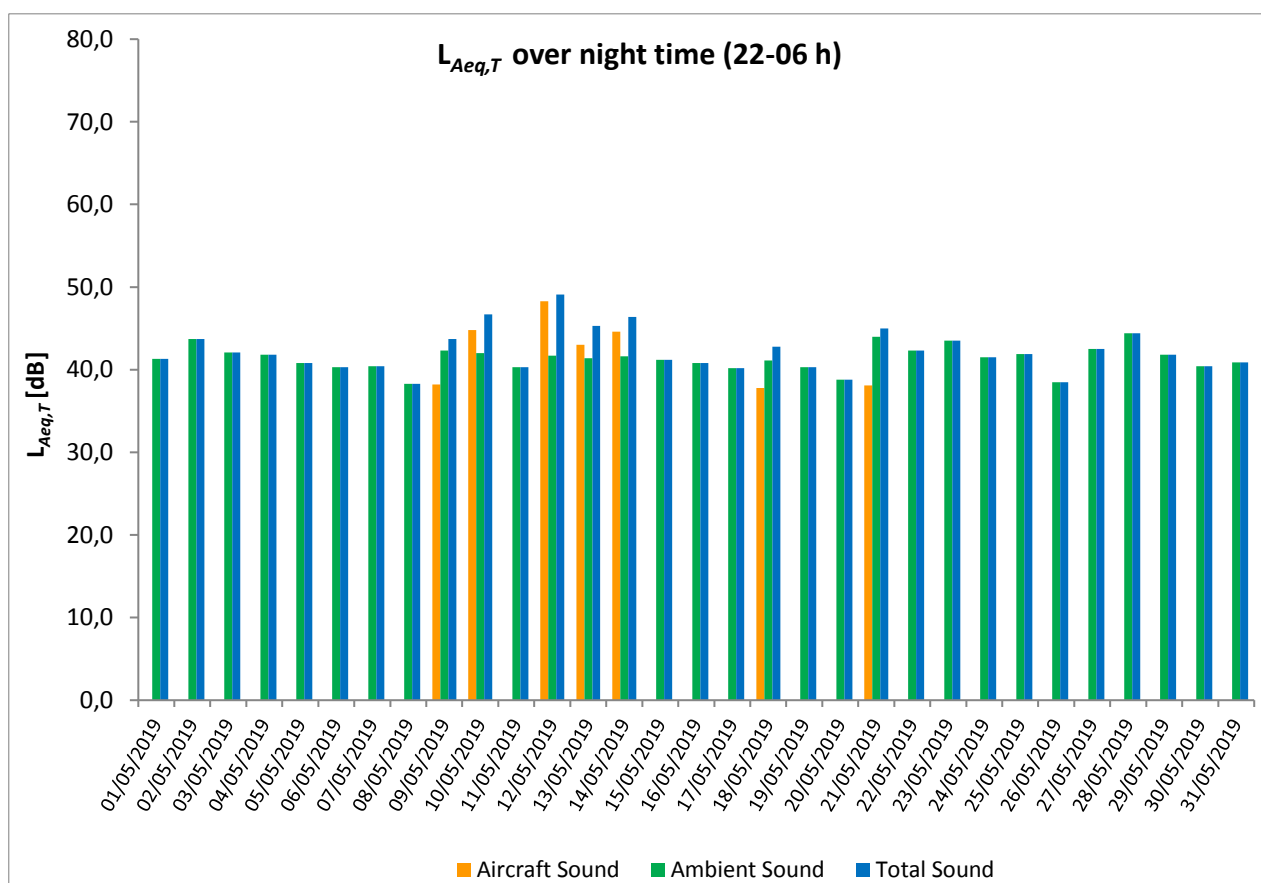
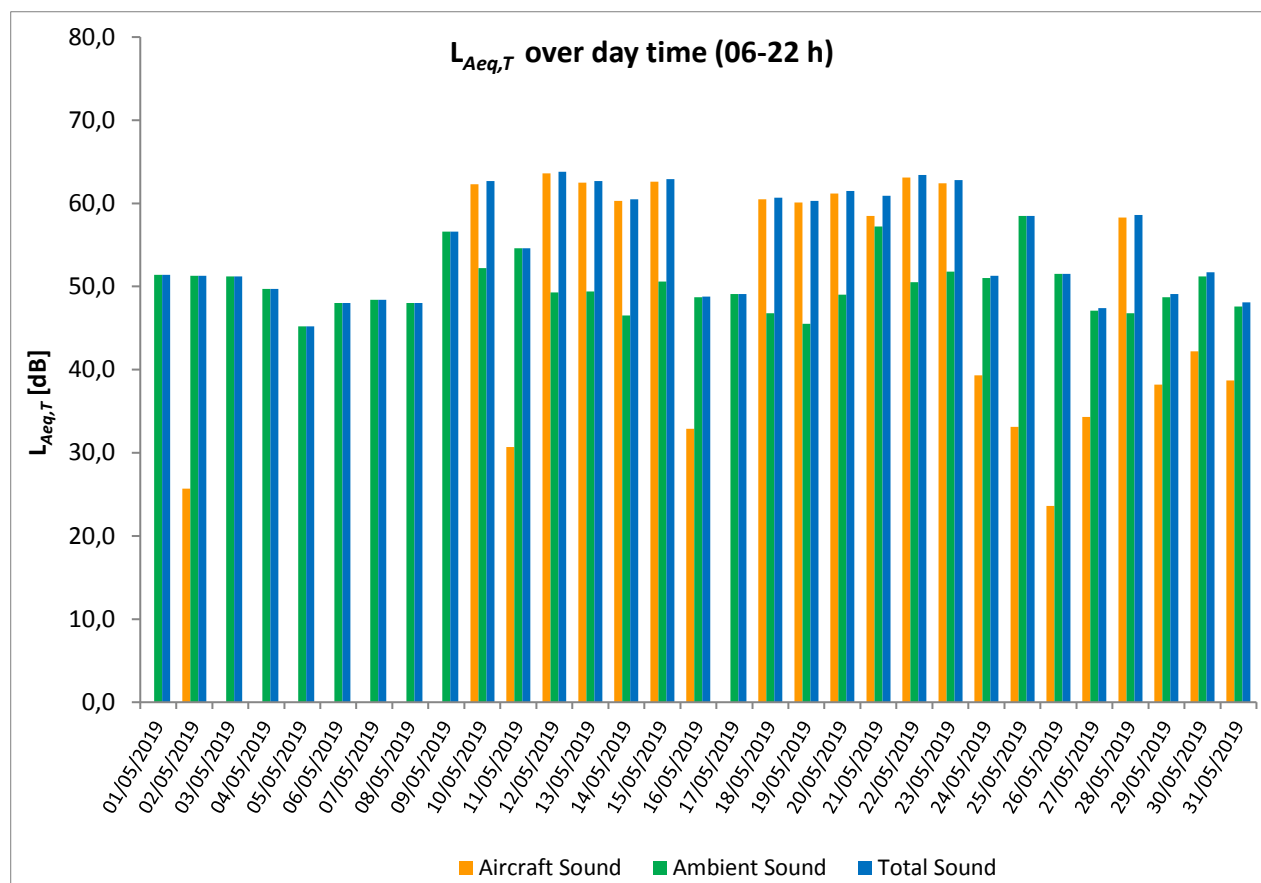
* Availability < 50%

** One or more events measured at wind speed above 5 m/s, not included into calculation

Equivalent Continuous Sound Pressure Level

MP12 Praha 17 - Řepy

May 2019



Equivalent Continuous Sound Pressure Level

MP13 Suchdol

May 2019

	Total Sound [dB]		Aircraft Sound [dB]		Ambient Sound [dB]	
	L _{Aeq,T} DAY	L _{Aeq,T} NIGHT	L _{Aeq,T} DAY	L _{Aeq,T} NIGHT	L _{Aeq,T} DAY	L _{Aeq,T} NIGHT
01/05/2019	57.7	48.0	56.5	47.3	51.5	39.7
02/05/2019	59.5	49.6	56.1	49.2	56.9	39.6
03/05/2019	58.0	50.8	57.0	50.4	51.1	40.6
04/05/2019	56.8	46.8	56.1	45.9	48.3	39.4
05/05/2019	55.8	50.3	54.9	49.9	48.6	40.1
06/05/2019	57.3	51.1	56.4	50.7	50.0	40.7
07/05/2019	56.2	47.5	55.8	46.7	46.5	39.3
08/05/2019	57.2	48.6	56.1	47.8	50.5	40.7
09/05/2019	57.3	50.5	56.8	50.0	48.1	40.8
10/05/2019	53.6	52.6	50.5	52.2	50.6	41.6
11/05/2019	59.1	49.8	56.2**	49.3	56.1	40.4
12/05/2019	50.9	51.5	47.3**	50.4	48.4	45.1
13/05/2019	51.4	50.1	48.4	49.4	48.5	41.5
14/05/2019	57.4	50.0	50.3	49.1	56.5	42.9
15/05/2019	50.8	50.1	47.1	49.1	48.4	43.1
16/05/2019	57.7	51.8	57.2	51.2	48.4	42.4
17/05/2019	58.0	50.6	56.3	49.9	53.0	42.5
18/05/2019	52.5	51.0	49.9	50.2	49.0	43.0
19/05/2019	52.1	52.2	50.9	51.7	45.9	42.5
20/05/2019	61.5	51.5	52.1	50.9	60.9	42.9
21/05/2019	55.0	50.2	52.0	49.3	52.0	42.9
22/05/2019	53.6	52.2	52.6	51.4	46.9	44.2
23/05/2019	54.3	51.8	50.2	51.1	52.2	43.6
24/05/2019	67.8	51.4	56.2	49.9	67.5	46.2
25/05/2019	57.6	50.0	55.6	48.9	53.2	43.6
26/05/2019	57.4	50.5	56.3	49.5	50.8	43.8
27/05/2019	58.3	50.8	56.6	49.9	53.5	43.6
28/05/2019	55.8	50.8	55.2	49.7	47.3	43.9
29/05/2019	56.5	51.9	55.7	51.2	48.8	44.1
30/05/2019	57.4	51.5	56.5	50.7	49.9	43.6
31/05/2019	58.1	52.2	57.1	50.9	51.6	46.3
Sum	58.2	50.8	54.9	50.0	55.5	42.8

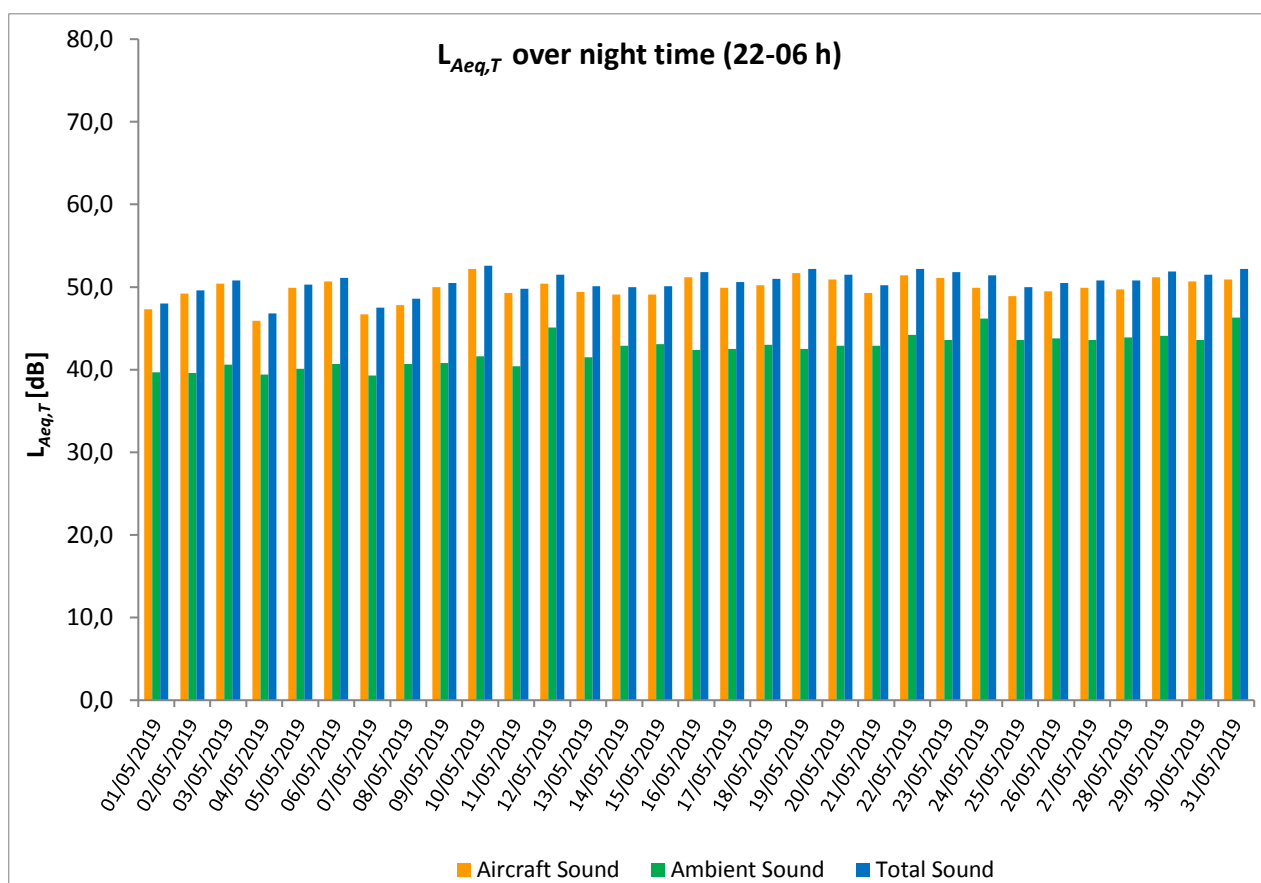
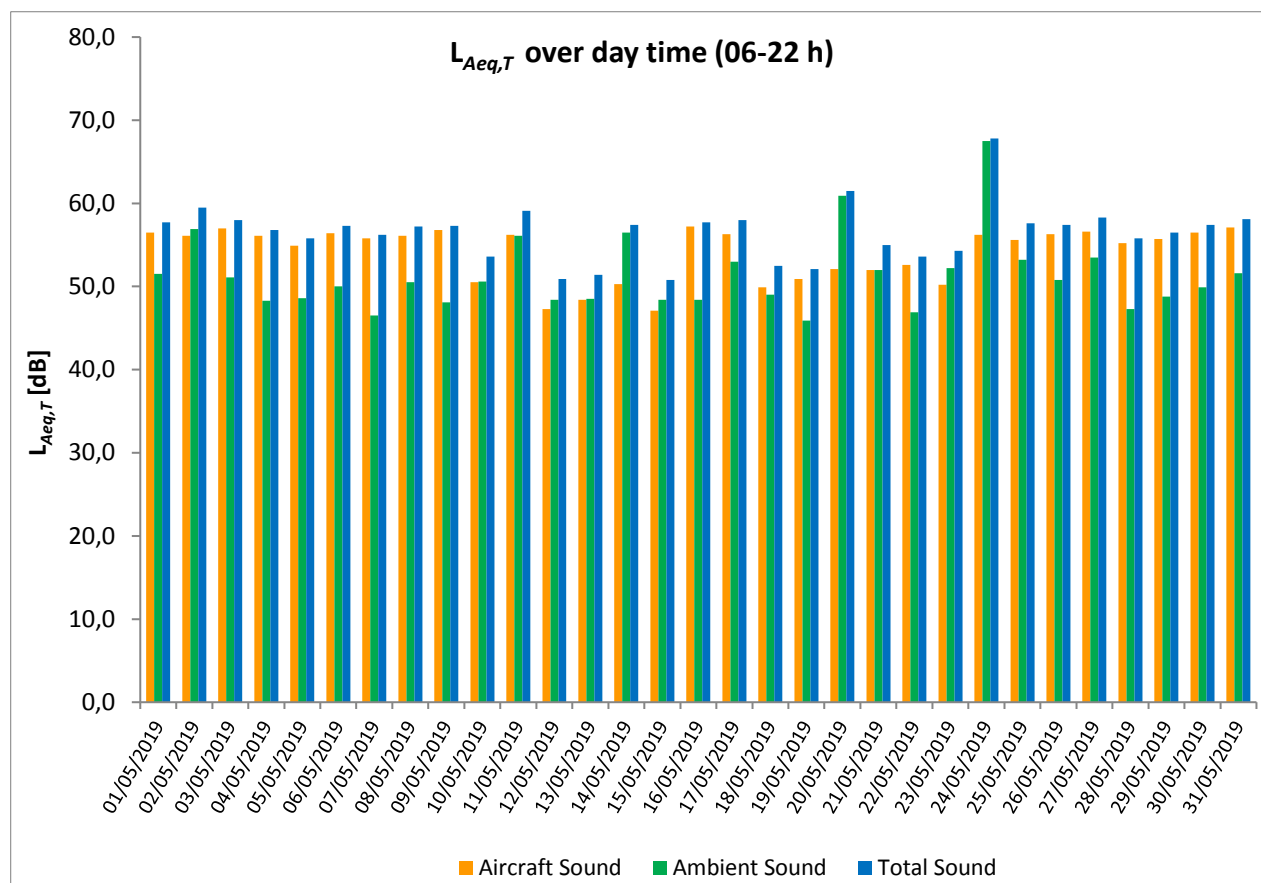
* Availability < 50%

** One or more events measured at wind speed above 5 m/s, not included into calculation

Equivalent Continuous Sound Pressure Level

MP13 Suchdol

May 2019



Equivalent Continuous Sound Pressure Level

MP14 Malé Kyšice

May 2019

	Total Sound [dB]		Aircraft Sound [dB]		Ambient Sound [dB]	
	L _{Aeq,T} DAY	L _{Aeq,T} NIGHT	L _{Aeq,T} DAY	L _{Aeq,T} NIGHT	L _{Aeq,T} DAY	L _{Aeq,T} NIGHT
01/05/2019	65.5	48.4	52.6	47.3	65.3	41.8
02/05/2019	53.0	48.3	51.7	47.4	46.9	41.2
03/05/2019	54.2	46.2	52.7	44.9	48.8	40.5
04/05/2019	54.4	47.4	53.2	46.5	48.3	40.2
05/05/2019	55.8	50.4	55.0	49.5	48.0	43.4
06/05/2019	53.5	47.7	52.4	46.7	47.2	40.7
07/05/2019	54.0	47.1	52.1	46.1	49.6	40.3
08/05/2019	53.9	47.4	52.9	46.4	46.7	40.7
09/05/2019	52.9	47.6	51.1	46.4	48.1	41.6
10/05/2019	50.7	47.4	47.5	46.0	47.9	41.6
11/05/2019	59.4	48.2	53.9	46.9	57.9	42.3
12/05/2019	49.4	50.1	43.4	49.3	48.1	42.6
13/05/2019	49.9	50.0	45.9	49.3	47.7	41.8
14/05/2019	54.1	48.1	52.4	47.0	49.3	41.6
15/05/2019	51.8	47.8	49.5	46.7	48.0	41.3
16/05/2019	53.3	49.1	51.0	47.9	49.4	43.0
17/05/2019	56.7	50.7	55.8	49.6	49.8	44.2
18/05/2019	51.2	49.2	49.6	47.9	46.1	43.4
19/05/2019	51.9	50.9	49.3	48.5	48.3	47.3
20/05/2019	53.5	51.1	50.9	50.4	50.1	42.6
21/05/2019	50.7	49.4	48.0	47.7	47.2	44.5
22/05/2019	50.5	48.4	46.4	46.7	48.4	43.5
23/05/2019	52.5	50.1	50.6	48.9	48.0	43.8
24/05/2019	55.9	48.6	55.0	47.1	48.5	43.3
25/05/2019	54.2	49.1	52.7	47.8	48.7	43.3
26/05/2019	53.3	50.3	52.3	49.5	46.5	42.9
27/05/2019	53.6	49.4	52.6	48.0	46.4	43.9
28/05/2019	52.9	50.2	50.6	48.2	49.1	45.8
29/05/2019	56.5	50.1	55.8	48.9	48.0	43.9
30/05/2019	54.2	48.9	53.0	47.6	47.8	43.1
31/05/2019	55.1	49.0	53.3	47.8	50.2	42.8
Sum	55.5	49.1	52.2	47.9	52.8	43.0

* Availability < 50%

** One or more events measured at wind speed above 5 m/s, not included into calculation

Equivalent Continuous Sound Pressure Level

MP14 Malé Kyšice

May 2019

