



# Prague Airport B2B Newsletter

OCTOBER 2022



Latest news



## Prague Airport's Fruitful Representation at Routes World 2022 Conference



[Representatives of Prague Airport](#) and CzechTourism took part in the Routes World Conference in Las Vegas between 16 and 18 October 2022. Over three days, more than 50 meetings were conducted, mainly with airline representatives from all over the world, including 22 long-haul carriers. 15 airlines confirmed their intention to increase operations at Prague Airport in addition to airport's original plan for 2023. Some of the top conference results include the possible strengthening of direct connections to Asia and the Middle East. Aside from those, Prague Airport also expects to see a certain increase of traffic of its European destinations, including several new routes.

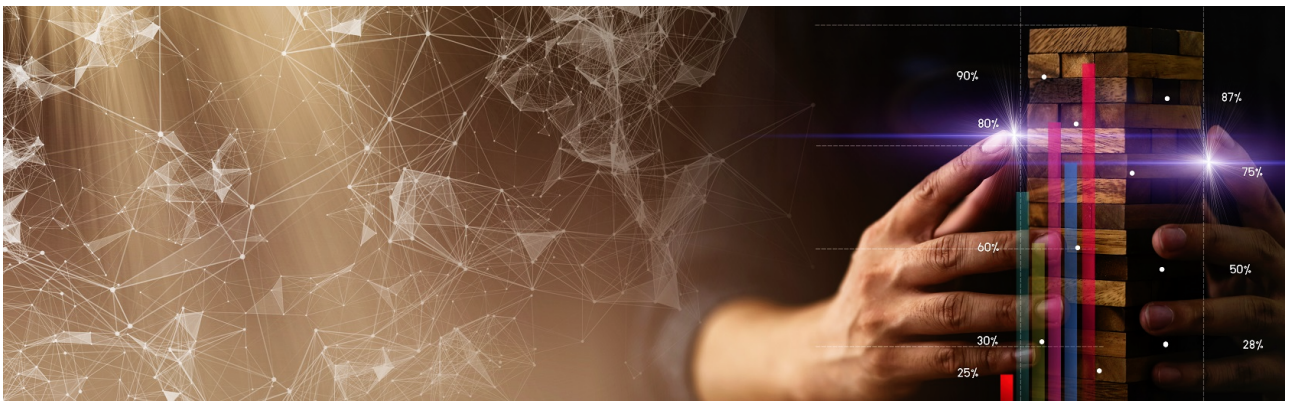


## SalamAir Launches Two New Routes from Prague

[Explore](#)

On 21 October, [the inaugural SalamAir flight](#) from Muscat to Prague, and subsequently from Prague to Salalah, took place. Prague Airport thus gained the first scheduled air connection from Prague to Oman. The route to Muscat will be operated once a week (every Wednesday), and the same frequency will be made available on the route to Salalah (every Friday). Both new destinations will be served throughout the Winter Season with modern A321neo aircraft configured to carry 212 passengers.





## Moody's Aa3 Rating Confirmed for Prague Airport

[Explore](#)

Prague Airport's strong financial stability and creditworthiness rating of Aa3 was confirmed by the Moody's Investors Service renowned rating agency. Aside from other reasons, it was appreciated that, unlike other airports in Europe, the company did not face a critical shortage of staff. Moody's also highlighted Prague Airport's ability to flexibly manage operating and investments costs during the pandemic, and the company's preparedness in the context of the energy crisis.



## 10 Years with Václav Havel

[Explore](#)

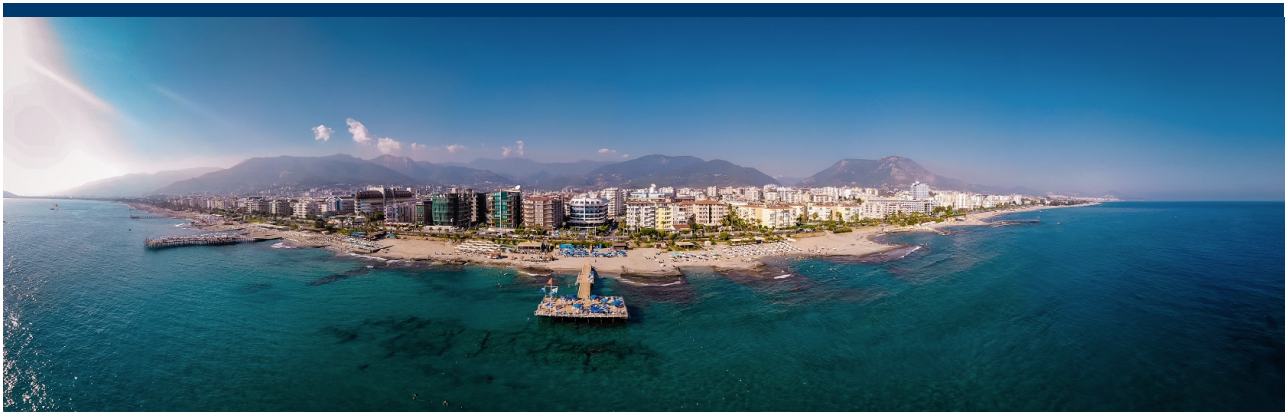
Since 5 October 2012, Prague Airport has been honoured to carry the name of the former president of the Czech Republic, Václav Havel. To commemorate this important milestone, passengers and visitors to the airport can see various exhibitions across the terminals to learn about the renaming of the airport 10 years ago and Václav Havel's life.



## Direct Flights between Prague and Baku Now Also Available in Winter Season



Thanks to the positive results of the direct connection between Prague and Baku, Azerbaijan Airlines has decided to prolong the operations of the route into the winter season. The flights will be operated twice a week (on Mondays and Fridays) throughout winter by Airbus A319 configured for 122 passengers.



## SunExpress to Expand Its Prague to Antalya Operations in Summer

An increase in the number of flight connections from Prague to Antalya has been announced by SunExpress. Starting next summer, the route will be operated daily (compared to the current 3 times per week frequency). The past summer season, Antalya was one of the most popular destinations from Prague Airport in terms of the number of handled passengers. In 2022, the dominating carrier on Antalya route was Smartwings, serving multiple frequencies a day.

### TRAFFIC RESULTS

	SEP 2021	SEP 2022	Y/Y CHANGE	JAN-SEP 2021	JAN-SEP 2022	Y/Y CHANGE
<b>Total Passengers</b>	653,933	<b>1,171,273</b>	79.11%	2,732,623	<b>8,144,050</b>	198.03%
Scheduled	587,543	<b>984,780</b>	67.61%	2,398,534	<b>7,026,370</b>	192.94%
Non-scheduled	66,390	<b>186,493</b>	180.91%	334,089	<b>1,117,680</b>	234.55%
<b>Total Movements</b>	7,733	<b>10,364</b>	34.02%	40,224	<b>76,794</b>	90.92%
Scheduled	5,202	<b>7,024</b>	35.02%	23,960	<b>53,448</b>	123.07%
Non-scheduled	2,155	<b>3,009</b>	39.63%	13,555	<b>20,683</b>	52.59%
Others	376	<b>331</b>	11.97%	2,709	<b>2,663</b>	1.70%
<b>TOP 3 DESTINATIONS</b>	London, Paris, Antalya					
<b>TOP 3 COUNTRIES</b>	Italy, Greece, United Kingdom					



---

**Letiště Praha, a.s.**

K letišti 1019/6, 161 00, Prague 6  
Czech Republic

Business reg. no.: 282 44 532; a company registered in the  
Commercial Register kept by the Municipal Court in Prague,  
Section B, Insert 14003

This email was sent to you by Prague Airport, a. s., as part of  
internal communication with a partner. If you do not wish to  
receive the newsletter, click on Unsubscribe.

[Unsubscribe](#)