

If you are having trouble viewing this email, please click [here](#)



B2B NEWSLETTER 03/2018



OPERATIONS AND EVENTS

VÁCLAV HAVEL AIRPORT PRAGUE'S SUMMER SCHEDULE

On 25 March 2018, summer schedule came in effect at Prague Airport. 67 air carriers will operate Prague during the summer season offering regular scheduled flights to 157 destinations worldwide. American Airlines' direct flights to Philadelphia and Wizzair's Prague – Kutaisi route are some of the new additions to the summer schedule.



AEROFLOT CELEBRATES 95 YEARS OF OPERATIONS

On Friday, 16 March 2018, together with Prague Airport, Aeroflot, Russian airlines, organised a celebration for its passengers to commemorate the 95th anniversary of its foundation. On the occasion, the carrier operated its four Friday services between Václav Havel Airport Prague and Moscow with aircraft in special liveries, including an Airbus A320 in retro colours. The Russian airline currently offers up to 5 connections a day between the Czech and Russian capitals (6th frequency from 1 July 2018).



NEWS FROM AIRLINES

EMIRATES AIRLINES TO CONNECT PRAGUE WITH DUBAI TWICE DAILY

Emirates Airlines announced its decision to add another frequency on the carrier's Prague – Dubai route. The decision was motivated by the

continued growth in the number of passengers using the service since its launch in 2010. The airline will start operating the new flights on the route on 1 July 2018. To satisfy the growing demand of both arriving and departing passengers, the carrier will use Boeing 777-300ER with 360 seats to operate the new flights.

► [READ MORE](#)



RYANAIR TO LAUNCH FIVE NEW ROUTES FROM PRAGUE

Ryanair, a low-cost airline, will launch five new routes from Prague effective the start of the 2018 winter schedule. Alongside the previously-announced routes to Amman and Paris/Beauvais, the carrier will expand its network by including routes connecting Prague with Pisa, Marrakesh and Eilat. All routes will be operated by Boeing 737-800 with 189 seats.

► [READ MORE](#)



NEW GOTHENBURG ROUTE WITH NORWEGIAN

Norwegian Air Shuttle airline has announced the launch of its new regular scheduled flights between Prague and Gothenburg, Sweden. The carrier will operate the route from Václav Havel Airport Prague with Boeing 737-800s for 186 passengers twice weekly – on Tuesday and Friday afternoons from 27 April 2018. Thanks to the new service, passengers from Prague will enjoy another regular scheduled connection with the second largest city in Sweden.

► [READ MORE](#)



CZECH AIRLINES INCREASES THE NUMBER OF FLIGHTS TO OSTRAVA

Effective this May, Czech Airlines adds more frequencies on its domestic regular scheduled route between Ostrava and Prague. As a result, the carrier will offer up to four flights a day, instead of the existing two, on the route on selected days, thus improving both the connection of the two cities and the connectivity of the offered flights to other destinations to/from Prague.

► [READ MORE](#)



URAL AIRLINES TO ADD FREQUENCIES ON ITS YEKATERINBURG ROUTE

With the start of the 2018 summer season, Ural Airlines, a Russian air carrier, increases the number of flights offered on its route between Václav Havel Airport Prague and Yekaterinburg to up to four weekly connections, operated on Tuesdays, Thursdays, Fridays and Sundays by Airbus A320s and A321s with the capacity of 160 and 220 passengers respectively.

► [READ MORE](#)



CYPRUS AIRWAYS ADDS FLIGHTS TO CYPRUS

Cyprus Airways scheduled to start operating flights on its new route connecting Larnaca, Cyprus, with Václav Havel Airport Prague this June, has announced its plan to add a second frequency on the route a month after the route launch. Both flights will be operated with Airbus A319s for 144 passengers from 2 July to 10 September 2018.



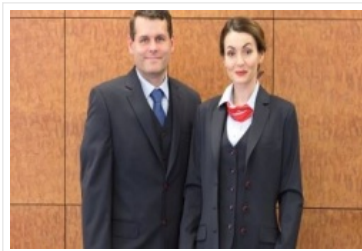
► [READ MORE](#)



SERVICES AND FACILITIES

NEW UNIFORMS OF PRAGUE AIRPORT EMPLOYEES

Prague Airport information assistants, VIP service providers and employees in charge of passenger and aircraft handling have received new uniforms at the beginning of March 2018. The new uniforms are to increase the employee comfort and ensure they are easily recognised from other workers of external companies active at Václav Havel Airport Prague.



TRAFFIC DEVELOPMENT

	02/2017	02/2018	Y/Y	01-02/17	01-02/18	Y/Y
TOTAL PASSENGERS	828,850	939,917	13.40%	1,673,203	1,872,837	11.93%
scheduled	814,386	926,212	13.73%	1,642,733	1,846,338	12.39%
non-scheduled	14,464	13,705	-5.25%	30,470	26,499	-13.03%
PAX ON DEPARTURE	412,567	468,584	13.58%	859,430	958,966	11.58%
local passengers	400,443	458,581	14.52%	831,024	937,200	12.78%
transfer	8,040	6,729	-16.31%	19,120	15,416	-19.37%
transit	4,084	3,274	-19.83%	9,286	6,350	-31.62%
TOTAL MOVEMENTS	8,983	9,479	5.52%	18,723	19,608	4.73%
scheduled	7,567	8,137	7.53%	15,842	16,869	6.48%
non-scheduled	1,200	1,142	-4.83%	2,469	2,336	-5.39%
others	216	200	-7.41%	412	403	-2.18%
TOP 3 DESTINATIONS:	1. Moscow/SVO, 2. Paris/CDG, 3. Amsterdam					
TOP 3 COUNTRIES:	1. United Kingdom, 2. Italy, 3. Russian Federation					

Letiště Praha, a.s.
K Letišti 6/1019, 160 08 Praha 6
tel.: +420 220 111 888

www.prg.aero



If you do not wish to receive our newsletters, please feel free to [unsubscribe](#)

