

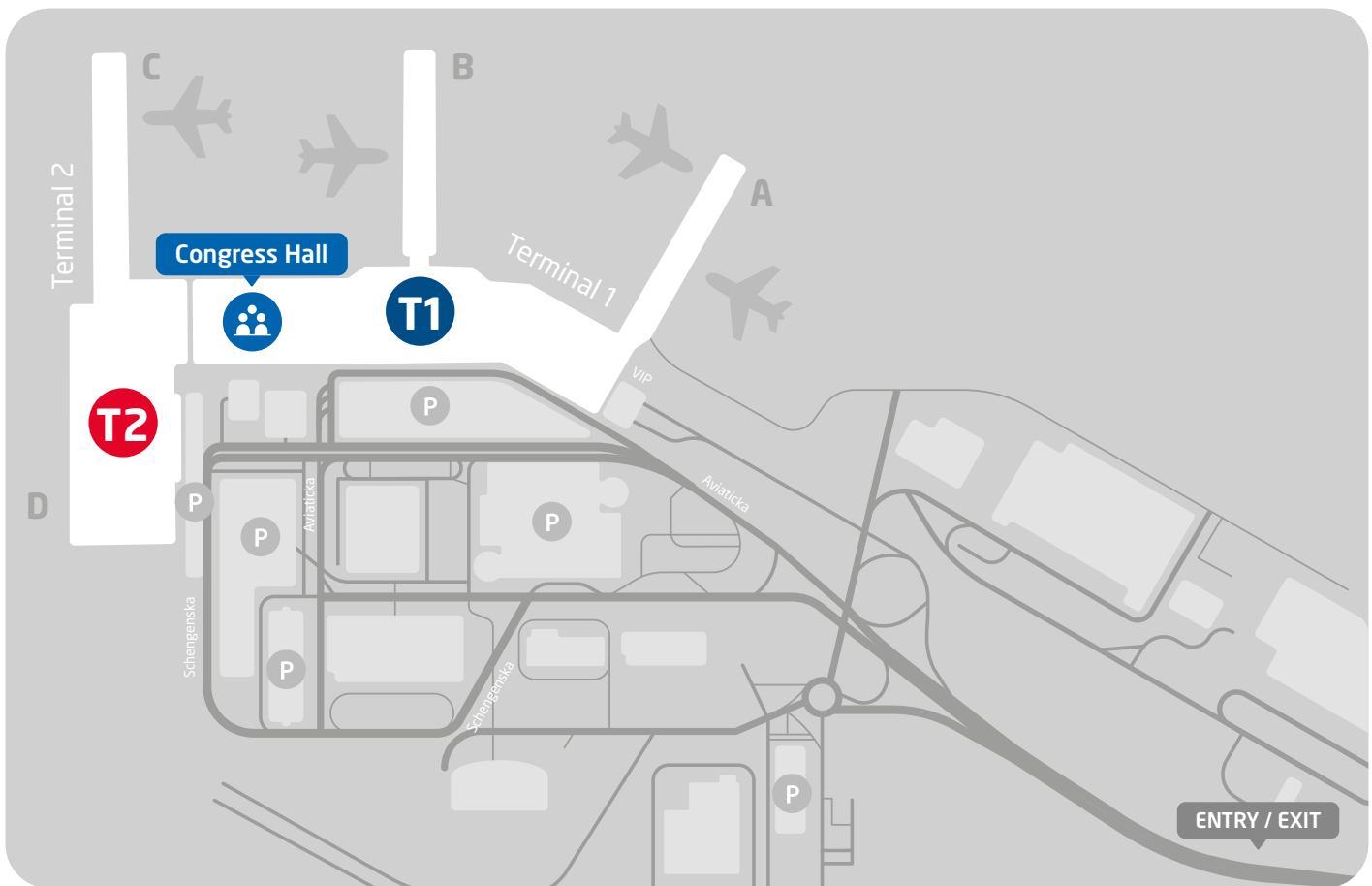


Prague Airport Congress Hall



BOOK ONLINE

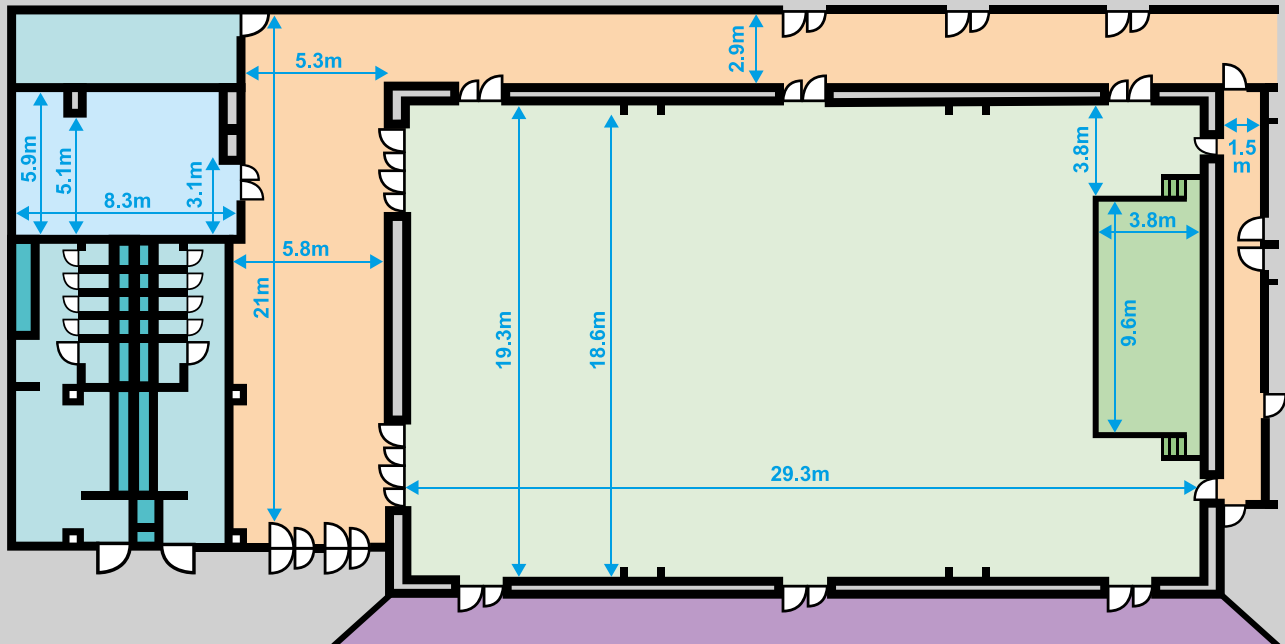
Prague Airport Congress Hall



Prague Airport Congress Hall Suitable for Hosting:

- Conferences
 - Congresses
 - Training Sessions
 - Seminars
 - Lectures
 - Symposia
- The Congress Hall is located in the airport public area on the upper floor of the Terminal 1 and 2 connecting corridor.
 - It is accessible from the public area, either via Terminal 2 Departure Hall or via the connecting corridor, alternatively by lift from Terminal 2.
 - **Hotels located in its vicinity:**
 - Courtyard Marriott Hotel opposite Terminal 1
 - Holiday Inn Hotel approximately 800m from Terminal 1
 - Ramada Hotel close to Terminal 3

Prague Airport Congress Hall



Using sliding panels, the hall can be divided in three units (sliding panels are not soundproof).

- Each unit has its own entrance.
- There is a stage in one unit.
- There is a corridor behind the Hall which can be used for catering or as a cloak room.
- Hall maximum capacity per specific seating order is as follows: "theatre" supports 240 seats, while "classroom" offers 120 seats.
- Inventory consists of 240 upholstered chairs, 60 tables (140cm x 46cm), 51 bistro tables, 19 buffet tables, 5 coat racks including hangers, and a lectern.

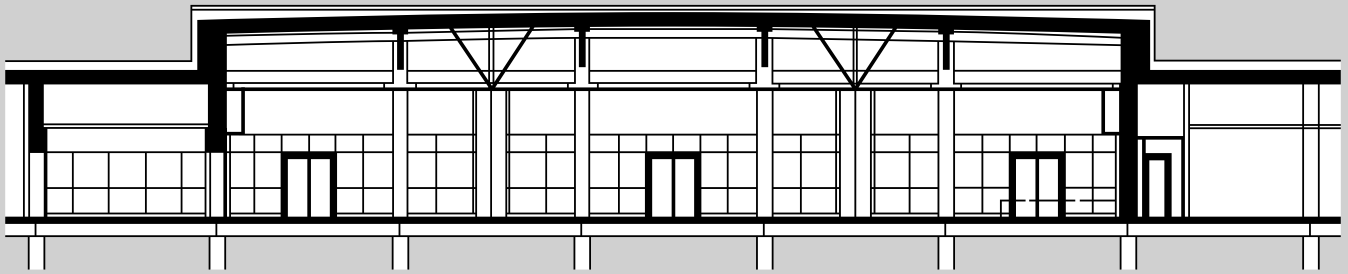


Area

Congress Hall	566m ²
Terrace in front of the Hall	490m ²
Corridor behind the Hall	132m ²

Prague Airport Congress Hall

LONGITUDINAL SECTION



Division of the hall using sliding panels:

- The front section of the Hall, which includes the stage, has an area of approx. 169m².
- The middle section of the Hall has an area of approx. 213m².
- The rear section of the Hall has an area of approx. 174m².

Stage Dimensions

Height	61cm
Width	960cm
Depth	409cm

Hall Height

From the Floor	418cm
From the Stage	357cm



Prague Airport Congress Hall



Technical Equipment:

- 3× Panasonic PT-MZ880 data projector (3LCD WUXGA, 4K support, 8000 ANSI, 3.000.000:1 dynamic contrast)
- 1× Rollo main projection screen 350×232 cm
- 2× Side Screenline IntelliScreens 300×197 cm
- Bose Freespace room sound system
- 6 Sennheiser wireless microphones
- 2 wireless lapel microphones
- 1× presenter with laser pointer
- HDMI connection for an external laptop
- 12 XLR outputs for camera connections
- 2 Panasonic AW-UE50 fixed cameras for transmitting video from the hall via social media

Additional Services

Available with Hall Rental:



Individual Wi-Fi Access

(specific access data per event will be provided)



Catering

Coffee breaks, hot and cold buffets, tailored beverage supply per order and event nature.

Contact details: viktor.sefl@prg.aero



Parking by Terminals 1 and 2

Contact details: josef.pechr@prg.aero



Private Airport Tours

For additional information, please visit:

<https://www.prg.aero/en/tour-airport>

Prague Airport Congress Hall



Congress Hall Rental Pricelist

Area	All Day	6 Hours	1 Hour
Entire Hall	CZK 34,007	CZK 18,363	CZK 5,442
2/3 of the Hall	CZK 23,125	CZK 12,243	CZK 4,081
1/3 of the Hall	CZK 12,243	CZK 6,801	CZK 2,721
Terrace in front of the Hall	CZK 13,603	N/A	N/A

Quoted prices are exclusive of VAT.



Wi-Fi Network - Internet Connection Rental Pricelist

Duration	Price
1 hour / 60 minutes	CZK 150
3 hours / 180min	CZK 250
24 hours / 1 day	CZK 600
168 hours / 1 week	CZK 1,400

Quoted prices are exclusive of VAT.



Binding Orders:

Via <https://www.prg.aero/en/desks-and-counters-hire> need to be submitted no later than 48 hours in advance to the e-mail address of: pronajmy@prg.aero.

Rent is paid against an invoice submitted generally by post, or electronically upon request.