

	Cabin Baggage	Checked-in Baggage
Laptops, cameras, music players, mobile phones, tablets	✓	✓
Liquids and gels each in a container of up to 100ml*	✓	✓
Medicine in a liquid form and baby food for the time of travel	✓	✓
Scissors and knives with cutting edges/blades shorter than 6cm (not applicable to knives with safety locks)	✓	✓
Tools (drills, hammers, screwdrivers, keys, etc.), medical instruments	✗	✓
Firearms and their imitations (paintball, airsoft, starting, gas, etc.), ammunition**	✗	✓
Hockey sticks, golf clubs, ski poles, walking sticks and canes, fishing rods, paddles	✗	✓
Explosives and booby trap systems, detonators, fireworks, igniters	✗	✗
Acids, corrosives and flammables	✗	✗
Pressure containers and gases (e.g. propane-butane, pepper sprays)	✗	✗
Solid and liquid flammables, radioactive, toxic and infectious agents	✗	✗
Lithium batteries, devices***	✓	✗

Prohibited Items



It is the unconditional right of the security check personnel to declare as prohibited additional items not listed above but raising legitimate suspicion of posing a threat to the safety of civil aviation.

- * All containers with gels and liquids must be placed in a re-sealable transparent plastic bag with a maximum content of 1 litre and removed from the the cabin baggage prior to the security check.
- ** In line with relevant regulations and carrier's transport conditions.
- *** In case of any uncertainties regarding transport terms and conditions, contact your operating airline.
- ✓ In general, transport in checked-in baggage is not recommended as the listed items are considered to be valuable and fragile and airlines cannot be held liable for damages.

1 Review the aviation security standards before going to the airport, and in case of any uncertainties contact your airline or the airport information desk.

2 Arrive at the airport allowing enough time for smooth baggage check-in and security screening.

3 Wait for your turn at the security screening area patiently. Follow the instructions and directions of the security personnel and stay within the outlined corridors, enabling smooth security check flow.

4 Remove the re-sealable plastic bag containing gels and liquids from your cabin baggage.

5 Remove large electronic devices (laptops, etc.) from your cabin baggage and place them in the provided plastic tray.

6 Place your cabin baggage on the X-ray machine conveyor belt.

7 Place all items with metal parts, e.g. mobile phones, keys, cigarettes, coins, valets, etc., in the provided plastic tray.

8 Remove your top layer of clothing and place it in the plastic tray (coats, jackets, etc.).

9 Wait for the security officer's instruction to proceed through the frame metal detector. Accept any request for additional check calmly as it is not personal, but a part of the standard routine.

10 Your cabin baggage and items placed in the provided plastic trays will be subjected to an X-ray check. If the security officer asks you to open your baggage or submit any of the separately screened objects for additional check, please do so without any objections, providing due cooperation. Collect all your belongings upon completion of the security screening process.



Prague Airport Safety Rules

Ten Steps to Ensure Problem-free Airport Security Screening

Letiště Praha, a. s.
K Letišti 1019/6 · postcode 161 00, Prague 6
T +420 220 111 888
E informace@prg.aero
www.prg.aero

www.prg.aero



In line with steps to increase passenger safety and pursuant to EU legislation, Security Control workers at Václav Havel Airport Prague perform detection controls inside selected checked baggage. During the procedure, certain pieces of baggage are opened and physically checked for the presence of trace elements of explosives. The process helps prevent the loading of explosives into aircraft cargo holds.

during its opening and it may become impossible to close and lock it again. In such cases, in addition to the shrink wrap, the baggage will also be secured with Prague Airport-branded safety straps.

Re-wrapped checked baggage



To prevent damage to your baggage during the detection control, please secure your baggage using TSA locks (marked with a red diamond sign), padlocks or shrink-wrapping.

TSA lock



With certain safety measures in place (integrated locks without TSA), baggage may be damaged

Passengers with damaged baggage are asked to contact the baggage claims desk at their final destination and fill in a Damage Property Report (DPR) with the agent containing a case reference number and contact details for follow-up communication with the airline. Retrospective claims (e.g. to report damages noted after leaving the airport), need to be made directly to your operating airline within seven days from the incident occurrence (in line with the EU Council Directive No. 2027/97).

Checked Baggage Detection Controls

Physical inspections are performed under extremely strict safety measures. The entire procedure is documented and electronically monitored.

Please visit the airport's website: www.prg.aero/kontrola for additional information regarding the checked baggage inspection or call **+420 220 111 888**.

Liquids quantity limits upon transport in cabin baggage apply to all passengers, flying from EU countries or transferring via EU countries. Liquids purchased inside the airports' restricted areas (after passport control and security screening) are exempted from these regulations.

! Subject to Limitations

Liquids that can be transported in cabin baggage, subject to the individual containers' size limitations: Liquids and gels for everyday use (cosmetics, food, etc.) in containers with a **maximum capacity of 100ml**.



The above listed gels and liquids may be transported only:

- In containers with a maximum capacity of 100ml, placed in a re-sealable transparent plastic bag with a maximum content of 1 litre
- If removed from the cabin baggage to be presented separately for security screening

EU Security Standards Regarding Liquids and Gels

! Without Limitations

Liquids that can be transported in cabin baggage without limitations on size of the individual containers:

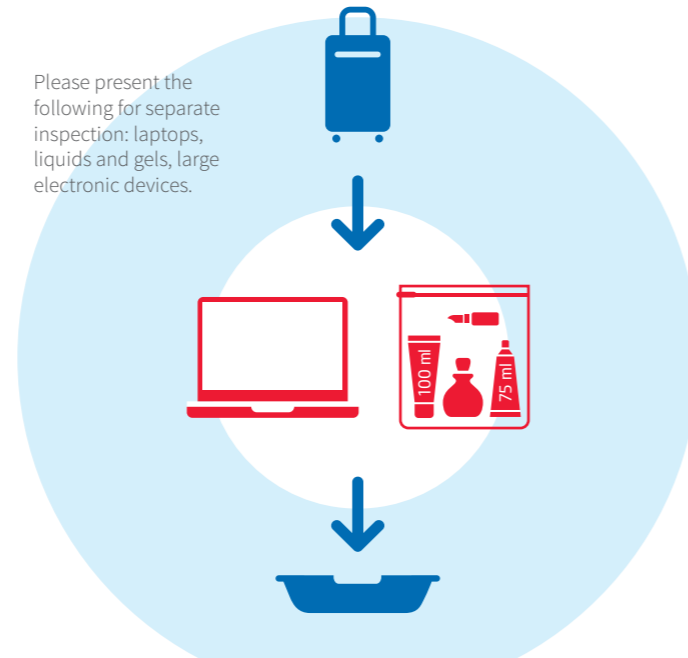
- Baby formula and baby food for the period of travel
- Medicine and diet food for the period of travel
- Intact Security Tamper Evident Bags (STEBs) from airport shops

It is recommended to always carry a prescription or doctor's note for the medicine and diet food transported.

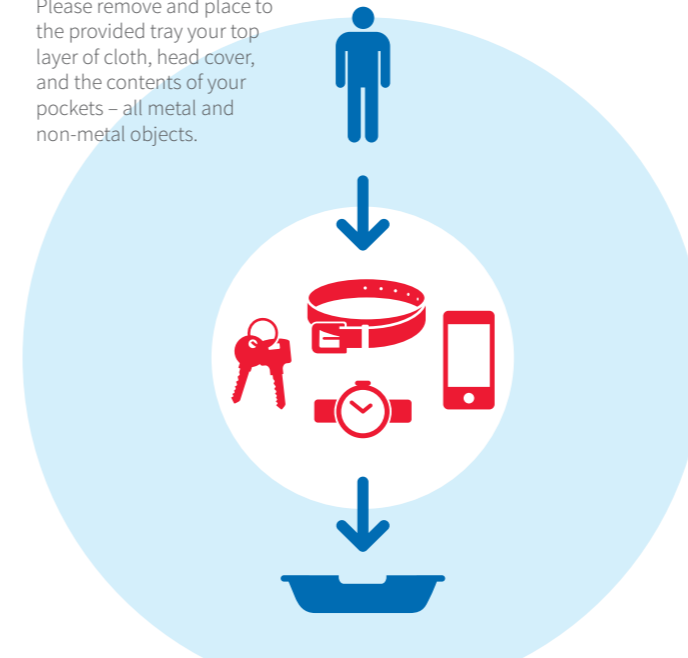
Unless the liquids and gels are presented for security screening in the above described manner, their transport will not be permitted.

The above listed gels and liquids will only be permitted for transport in cabin baggage if they pass the airport security screening.

Please present the following for separate inspection: laptops, liquids and gels, large electronic devices.



Please remove and place to the provided tray your top layer of cloth, head cover, and the contents of your pockets – all metal and non-metal objects.



Passenger Security Screening Instructions



Place all your pieces of baggage on the conveyor belt for security screening one by one.



Wait to be prompted by the security control worker to proceed through the metal detector.

Your telephones, laptops and other electronic devices containing lithium batteries.



Lithium batteries and e-cigarettes are dangerous objects.



If a lithium battery gets damaged or short-circuits, it may ignite.



Please do not place any of the above-mentioned objects in the baggage you intend to check in.



Transport of such objects is only recommended in cabin baggage.



The information on security standards listed herein constitutes a brief summary of the basic rules. For detailed information, please contact the information desk, talk to the security staff of Václav Havel Airport Prague or go to: www.prg.aero