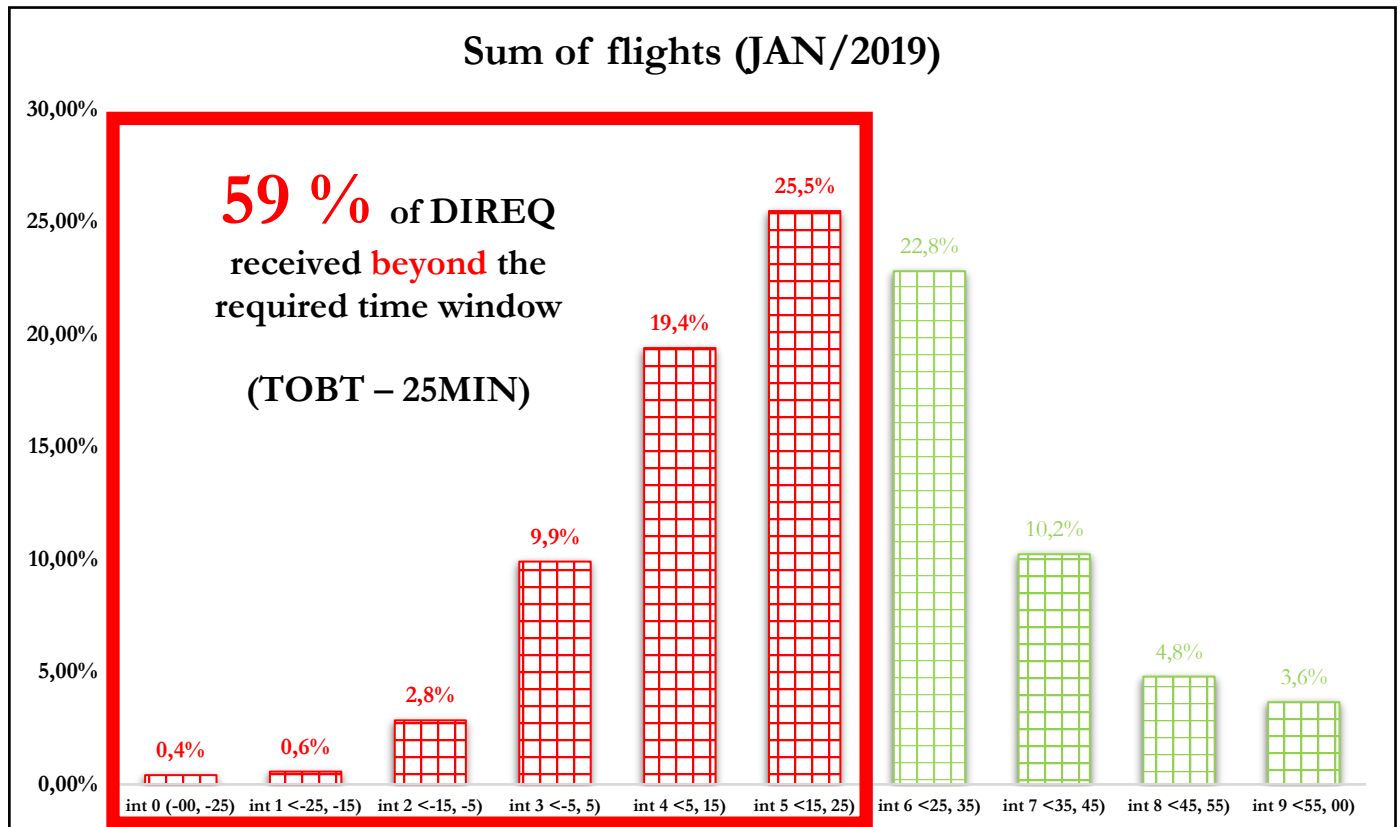


Submission of De/anti-icing requests (DIREQ)



To the attention of **FLIGHT CREWS**

The crew of the aircraft **should** submit de/anti-icing request (DIREQ) to the respective handling company (GHA) **at least 25 minutes** before TOBT value. Beware, that late DIREQ at times of high rate of such requests (or its last minute modifications), significantly disturbs the calculation of the entire departure sequence and thus **may cause you a delay**.